

# Parts Manual

## **MX15 / MX19** **Work Platform**

**Serial Numbers 20000 - Current**

---

Publication Number: 060546-006

---

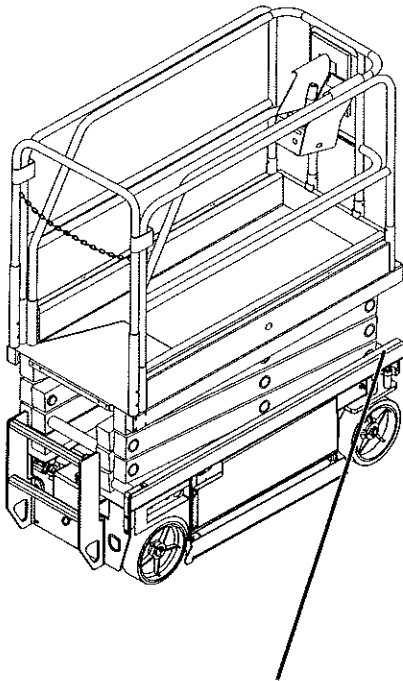
**UpRight**

# MX15 / MX19

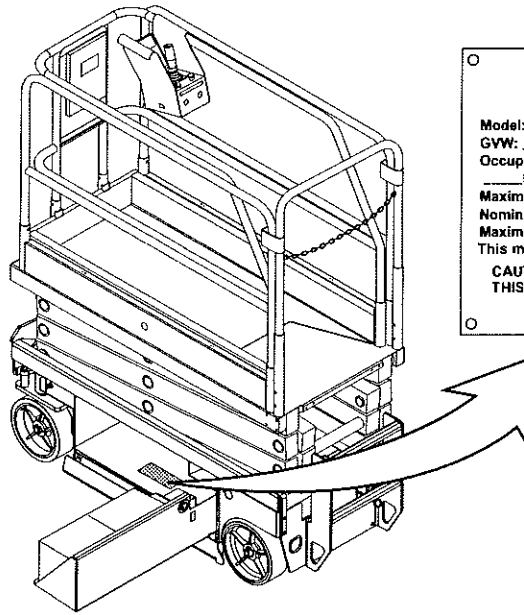
## Work Platform

### Serial # 20000 - current

When contacting UpRight for service or parts information, be sure to include the MODEL and SERIAL NUMBERS from the equipment nameplate. Should the nameplate be missing, the SERIAL NUMBER is also stamped on top of the chassis above the front axle pivot.



**Stamped Serial  
Number**



<b>UpRight Inc.</b>	
1775 PARK ST. SELMA CALIFORNIA 93662 USA	
Model: _____	Serial number: _____
GVW: _____ lbs.	Mfg. date: _____
Occupants and equipment must not exceed the rated workload _____ lbs. Rated number of occupants: _____	
Maximum platform height: _____ ft.	
Nominal system voltage: _____ vdc	
Maximum wheel and/or outrigger load: _____ lbs.	
This machine is manufactured to comply with ANSI A92.6-1999.	
CAUTION: CONSULT OPERATOR'S MANUAL BEFORE USE. THIS PLATFORM IS NOT ELECTRICALLY INSULATED	

**UpRight, Inc.**  
801 South Pine Street  
Madera, California 93637  
TEL: 559-662-3900  
FAX: 559-673-6184  
PARTS: 1-888-UR-PARTS  
PARTS FAX: 1-800-669-9884

# UpRight

Call Toll Free in U.S.A.  
1-800-926-LIFT

**UpRight**  
Unit S1, Park West Industrial Park  
Friel Avenue  
Nangor Road  
Dublin 12, Ireland  
TEL: +353 1 620 9300  
FAX: +353 1 620 9301

# PARTS MANUAL

This document lists and illustrates the replaceable assemblies and parts of this product, as manufactured by UpRight, Inc. Each parts list contains the component parts for that assembly.

## TABLE OF CONTENTS

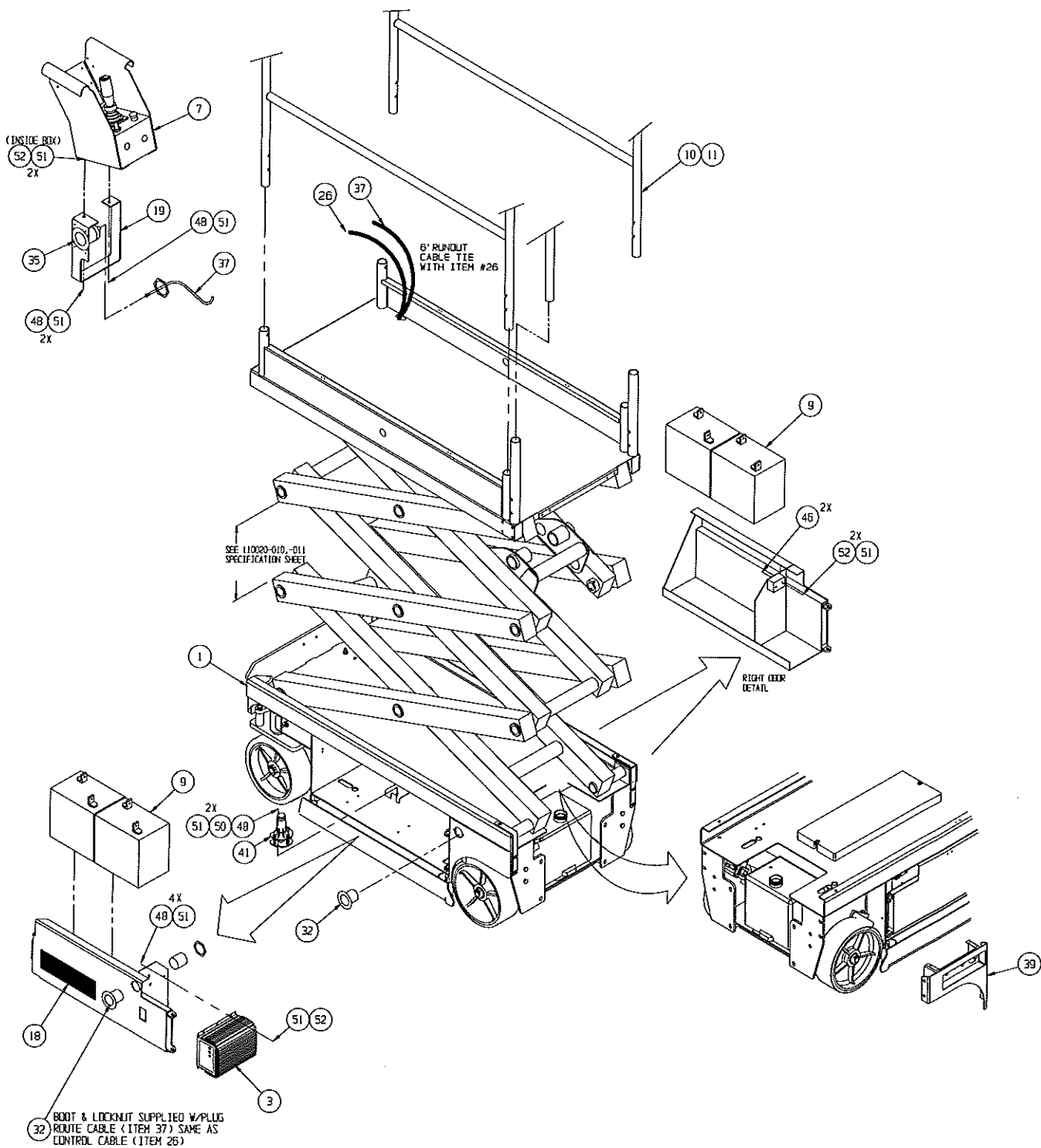
Final Assembly - MX15 065600-030 .....	2	Hose Kit Installation 065611-021 .....	30
Final Assembly - MX19 065700-030 .....	4	Hydraulic Tank Assembly 101152-001 .....	32
Final Assembly Wiring - MX15 065606-000 .....	6	Valve Block Assembly 113052-000 .....	33
Final Assembly Wiring - MX19 065606-001 .....	8	Valve Block 101120-122 .....	34
Controller Assembly 066013-018 .....	10	Power Unit Assembly 113055-000 .....	36
PQ Controller 065512-000 .....	12	Drive Motor Assembly 113050-000 .....	37
Lower Controls (Wheel Cover Assembly) 065980-004 .....	13	Steering Cylinder Assembly 113051-000 .....	38
Basic Assembly - MX15 065601-030 .....	14	Depression Cylinder Assembly 113053-000 .....	39
Basic Assembly - MX19 065701-030 .....	16	Brake Cylinder Assembly 113054-000 .....	40
Scissor Arm Assembly - MX15 065605-020 .....	18	Horn Assembly Option 066614-020 .....	41
Scissor Arm Assembly - MX19 065705-020 .....	20	Hour Meter/Low Voltage Indicator Option 066613-020 .....	42
Platform Guardrail Installation 065603-004 .....	22	Removable Controller Option 061898-001 .....	43
Deck Extension Assembly 065614-000 .....	23	Label Installation - MX15 065612-033 .....	44
Proximity Switch Assembly 067193-001 .....	24	Label Installation - MX19 065712-033 .....	44
Chassis Assembly 065602-030 .....	26		

# Final Assembly - MX15

## 065600-030

ITEM	PART	DESCRIPTION	QTY
1	065601-030	BASIC ASSY	1
2	065606-000	FINAL ASSY WIRING - MX15	1
3	069199-000	CHARGER	1
7	066013-018	CONTROLLER ASSEMBLY	1
9	015796-000	BATTERY 6 V	4
10	065614-000	EXTENSION DECK	1
11	065603-004	PLATFORM/GUARDRAIL ASSY	1
14	065611-021	HOSE KIT / INST.	1
15	065615-023	HYDRAULIC SCHEMATIC	REF
16	065616-026	ELECTRICAL SCHEMATIC	REF
17	110020-010	MX SPECIFICATION SHEET	REF
18	065612-033	LABEL KIT / INSTALLATION	1
19	065746-002	CONTROLLER GUIDE-WIDE	1
20	060540-001	DOCUMENTATION KIT	1

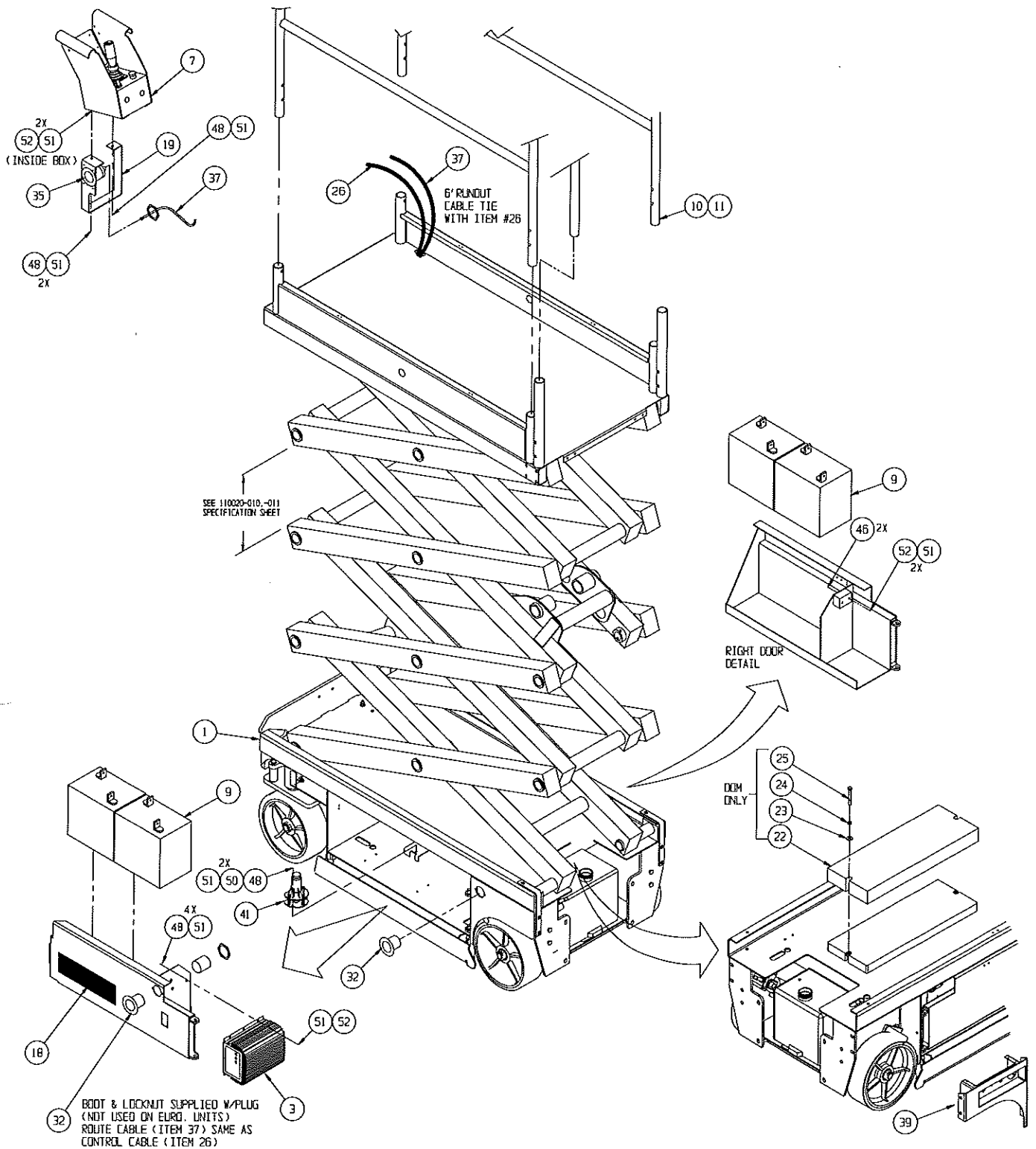
ITEM	PART	DESCRIPTION	QTY
21	060569-006	SERVICE MANUAL	1
22	060546-006	PARTS MANUAL	1
23	060570-008	USER MANUAL	1
26	065609-020	CONTROL CABLE ASSY	REF
32	067336-000	PLUG ASSY M 110Vac	2
35	067336-001	PLUG ASSY FM 110Vac	1
37	029495-099	WIRE AWG 14 GA 3 CONN.	37 FT.
39	065980-004	WHEEL COVER ASSY	1
41	029945-030	LEVEL SENSOR ASSY	1
46	011252-012	SCREW HHCS 1/4-20 X 1 1/2	2
48	011252-006	SCREW HHC 1/4-20UNC X 3/4	8
50	011238-004	WASHER 1/4 LOCK	2
51	011240-004	WASHER 1/4 STD FLAT	12
52	011248-004	NUT HEX ESNA 1/4-20UNC	8



# Final Assembly - MX19

## 065700-030

ITEM	PART	DESCRIPTION	QTY	ITEM	PART	DESCRIPTION	QTY
1	065701-030	BASIC ASSY	1	23	011240-006	WASHER - 3/8 STD. FLAT	2
2	065606-001	FINAL ASSY WIRING	1	24	011238-006	LOCKWASHER - 3/8 SPLIT RING	2
3	069199-000	CHARGER	1	25	011254-024	SCREW - 3/8-16 UNC X 3	2
7	066013-018	CONTROLLER ASSEMBLY	1	26	065609-021	CONTROL CABLE ASSY	REF
9	015796-000	BATTERY 6 V	4	27	060546-006	PARTS MANUAL	1
10	065614-000	EXTENSION DECK	1	28	060570-008	USER MANUAL	1
11	065603-004	PLATFORM/GUARDRAIL ASSY	1	32	067336-000	PLUG ASSY M 110Vac	2
14	065611-021	HOSE KIT / INST.	1	35	067336-001	PLUG ASSY FM 110Vac	1
15	065615-023	HYDRAULIC SCHEMATIC	REF	37	029495-099	WIRE AWG 14 GA 3 CONN.	37 FT.
16	065616-026	ELECTRICAL SCHEMATIC	REF	39	065980-004	WHEEL COVER ASSY	1
17	110020-010	MX SPECIFICATION SHEET	REF	41	029945-030	LEVEL SENSOR ASSY	1
18	065712-033	LABEL KIT / INSTALLATION	1	46	011252-012	SCREW HHCS 1/4-20 X 1 1/2	2
19	065746-002	CONTROLLER GUIDE-WIDE	1	48	011252-006	SCREW, 1/4-20UNC X 3/4	8
20	060540-001	DOCUMENTATION KIT	1	50	011238-004	WASHER 1/4 LOCK	2
21	060569-006	SERVICE MANUAL	1	51	011240-004	WASHER 1/4 STD FLAT	12
22	065963-002	COUNTERWEIGHT - UPPER	1	52	011248-004	NUT HEX ESNA 1/4-20UNC	8



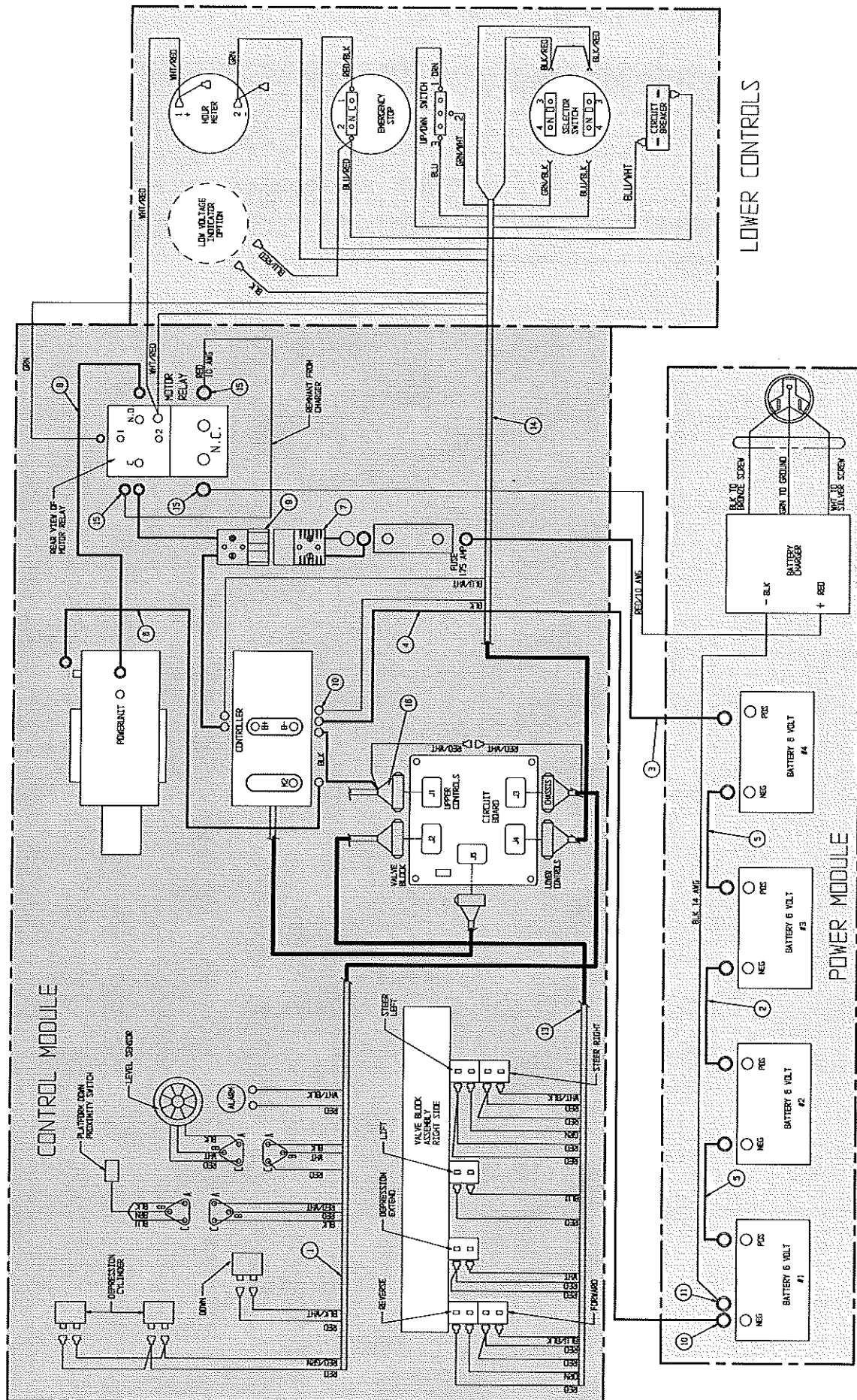
## Final Assembly Wiring - MX15

### 065606-000

ITEM	PART	DESCRIPTION	QTY
1	065943-004	WIRE HARNESS ASSY	1
2	062125-118	CABLE ASSY X 118	1
3	064195-022	CABLE ASSY X 22	1
4	064195-062	CABLE ASSY X 62	1
5	064195-015	CABLE ASSY X 15	2
6	062125-016	CABLE ASSY X 16	1
7	101182-001	CABLE ASSY W/CONNECTOR	1
8	062125-019	CABLE ASSY X 19	1

ITEM	PART	DESCRIPTION	QTY
9	101182-002	CABLE ASSY W/CONNECTOR	1
10	010154-001	COVER - BATTERY TERMINAL	10
11	029601-039	CONN. RING 5/16 10-12	3
13	065942-003	CABLE ASSY - VALVE BLOCK	1
14	067340-001	WIRE ASSY - LOWER CONTROLS	1
15	029601-021	CONN. RING 3/8 10-12	3
16	065609-020	CONTROL CABLE ASSY - MX15	1



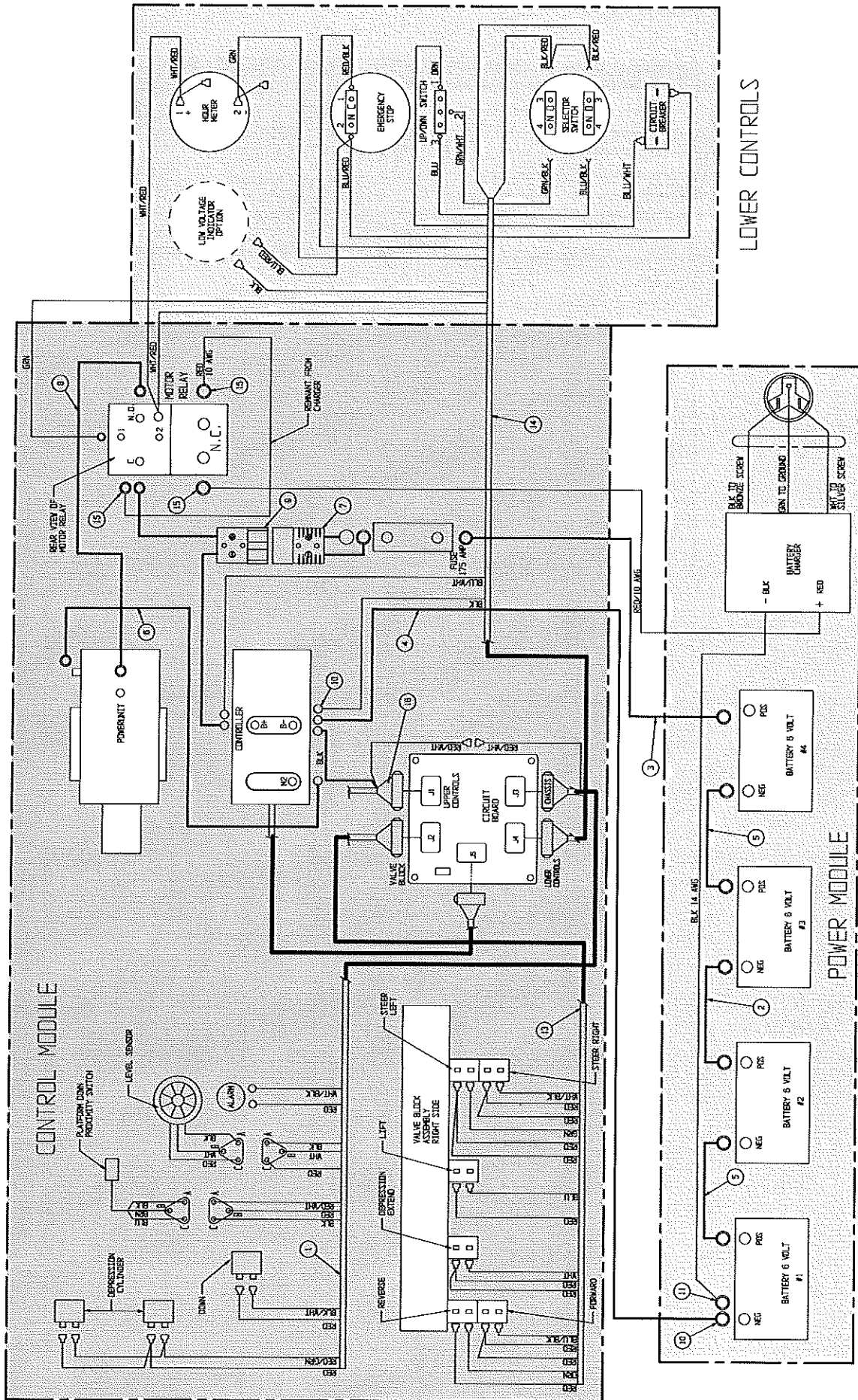


## Final Assembly Wiring - MX19

### 065606-001

ITEM	PART	DESCRIPTION	QTY
1	065943-004	WIRE HARNESS ASSY	1
2	062125-118	CABLE ASSY X 118	1
3	064195-022	CABLE ASSY X 22	1
4	064195-062	CABLE ASSY X 62	1
5	064195-015	CABLE ASSY X 15	2
6	062125-016	CABLE ASSY X 16	1
7	101182-001	CABLE ASSY W/CONNECTOR	1
8	062125-019	CABLE ASSY X 19	1

ITEM	PART	DESCRIPTION	QTY
9	101182-002	CABLE ASSY W/CONNECTOR	1
10	010154-001	COVER - BATTERY TERMINAL	10
11	029601-039	CONN. RING 5/16 10-12	3
13	065942-003	CABLE ASSY - VALVE BLOCK	1
14	067340-001	WIRE ASSY - LOWER CONTROLS	1
15	029601-021	CONN. RING 3/8 10-12	3
16	065609-021	CONTROL CABLE ASSY - MX19	1



# Controller Assembly

## 066013-018

ITEM	PART	DESCRIPTION	QTY
1	101188-010	BOX CONTROLLER	1
2	101223-003	COVER CONTROLLER	1
3	066805-002	SWITCH SELECTOR-2 POSITION	1
4	066805-006	SWITCH PUSH BUTTON	1
5	066805-011	CONTACT NC	1
6	066805-012	CONTACT NO - NC	1
7	065512-000	CONTROLLER PQ	1
8	063926-011	PLUG CAPLUG #CCF 1-14-20	2

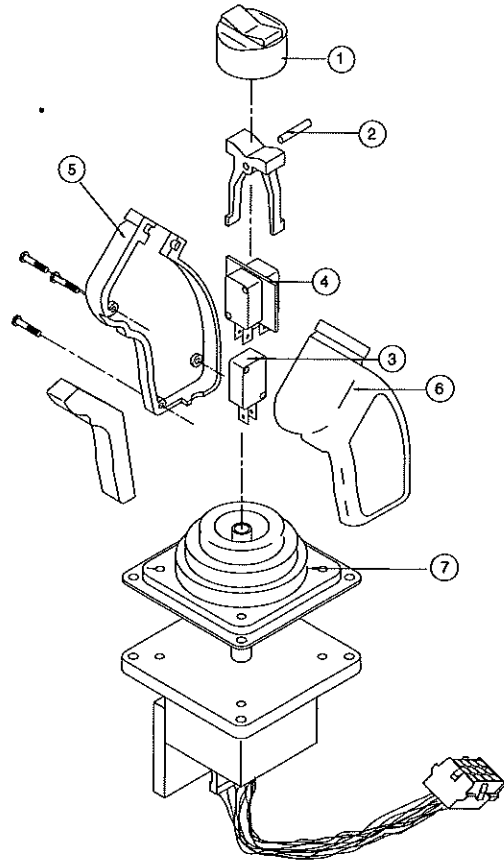
ITEM	PART	DESCRIPTION	QTY
9	068889-099	WEATHERSTRIP#CCF 1-14-20	2.3 FT.
11	011761-004	SCREW MACH SLOTTED TRUSS HD #10-24 X 1/2	4
13	101240-000	CABLE ASSY CONTROLLER	1
16	029925-010	CONN CABLE	1
17	029939-003	LOCKNUT 3/4	1
18	067990-020	4 PIN RECEPTACLE	1
19	067990-023	4 PIN WEDGE	1
22	063956-003	CONN 12 PIN	1



# PQ Controller

## 065512-000

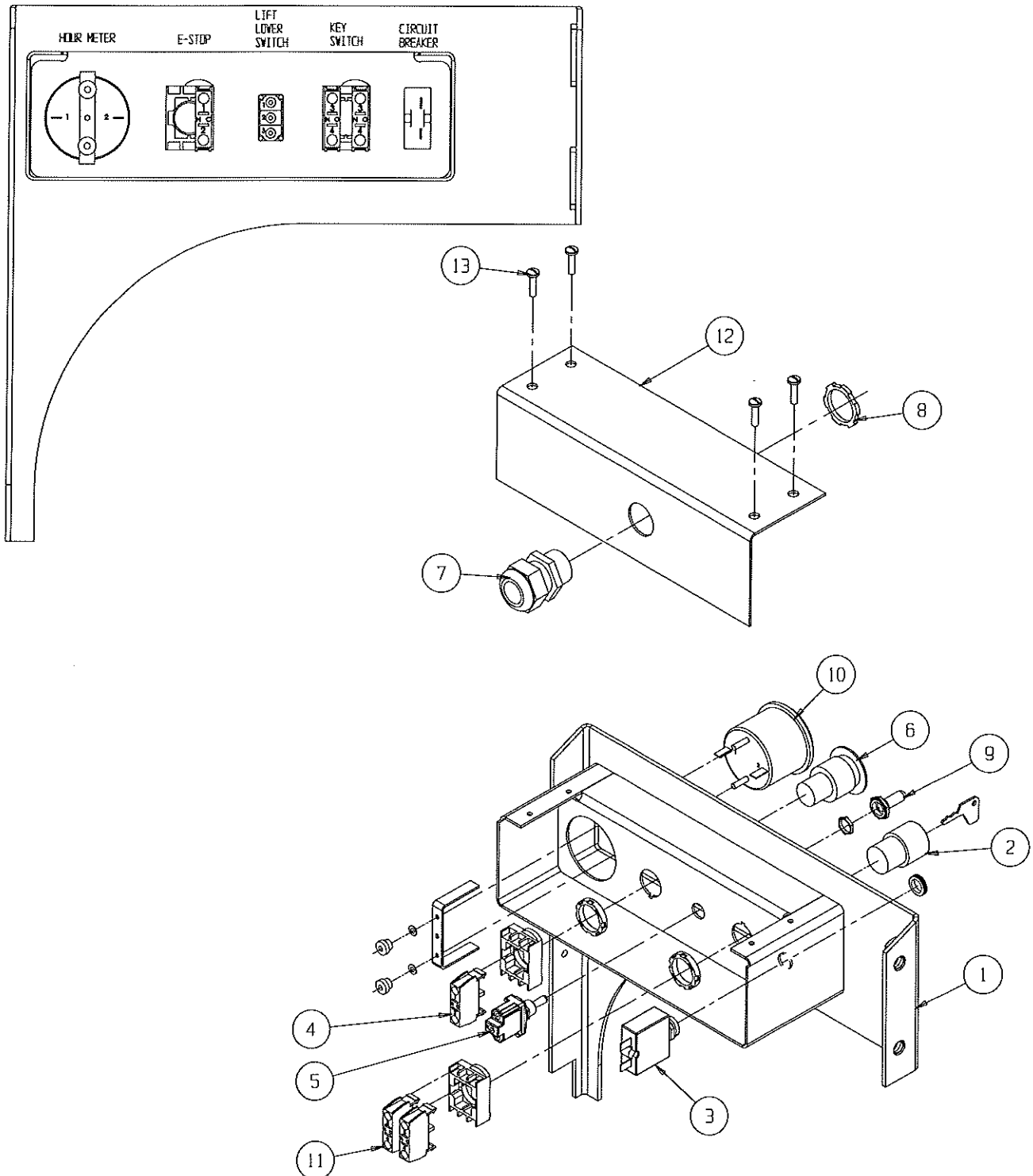
ITEM	PART NO.	DESCRIPTION	QTY
1	063953-001	CAP, RUBBER	1
2	065512-013	ROCKER, PIN	1
3	063953-007	SWITCH, INTERLOCK	1
4	065512-015	SWITCH, STEERING	1
5	065512-016	HANDLE HALF, RIGHT	1
6	065512-017	HANDLE HALF, LEFT	1
7	065512-018	BOOT, HANDLE	1



# Lower Controls (Wheel Cover Assembly) 065980-004

ITEM	PART NO.	DESCRIPTION	QTY
1	065979-001	WHEEL COVER WELDMENT	1
2	066805-004	KEYSWITCH	1
3	066882-005	CIRCUIT BREAKER	1
4	066805-011	SWITCH CONTACT BLOCK	1
5	012798-000	SWITCH TOGGLE	1
6	066805-006	SWITCH HEAD MUSHROOM	1
7	029925-010	CONNECTOR CABLE	1

ITEM	PART NO.	DESCRIPTION	QTY
8	029939-003	LOCKNUT 3/4 NPT	1
9	029872-000	BOOT SWITCH COVER	1
10	015752-000	HOURLMETER	1
11	066805-010	SWITCH CONTACT N.O.	2
12	065978-000	COVER	1
13	011811-006	SCREW SLFTP F HWH 10-32 X 3/4	4



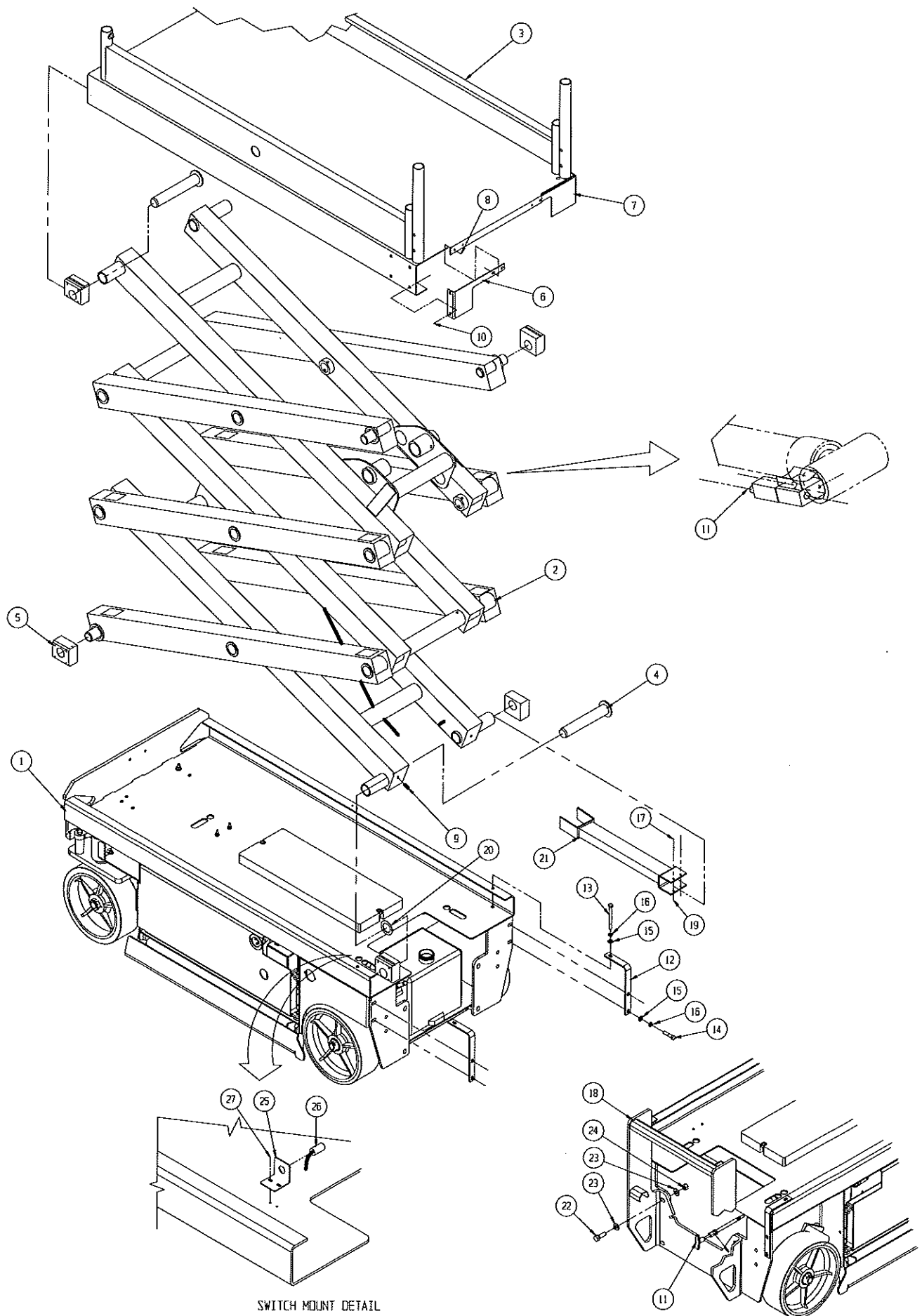
## Basic Assembly - MX15

### 065601-030

ITEM	PART	DESCRIPTION	QTY
1	065602-030	CHASSIS ASS'Y	1
2	065605-020	SCISSOR ARM ASS'Y- X15	1
3	066250-001	PLATFORM WELDMENT	1
4	065698-000	LOWER PIVOT PIN WELDMENT	4
5	065726-000	SLIDE PAD	8
6	065728-000	DECK BRACKET L.H.	1
7	065727-000	DECK BRACKET R.H.	1
8	014027-006	SCREW HHD SLFTP 1/4-28 x 3/4	4
9	011739-020	ROLLPIN 3/8 DIA. x 2 1/2	4
10	014066-008	SCREW SLFTP 1/4-AB x 1	16
11	065754-006	EMERGENCY LOWERING CABLE	1
12	065937-001	BEARING RETENTION ANGLE	2
13	011254-034	SCREW HHC 3/8-16UNC X 4 1/4	2
14	011254-014	SCREW HHC 3/8-16UNC X 1 3/4	4

ITEM	PART	DESCRIPTION	QTY
15	011240-006	WASHER 3/8 STD FLAT	4
16	011238-006	LOCK WASHER - 3/8" SPLIT RING	6
17	011829-022	CARRIAGE BOLT 1/4-20 X 2-3/4 PLATED	2
18	066307-006	LADDER WELDMENT - MX15	1
19	011248-004	LOCKNUT 1/4-20 UNC ESNA	2
20	011786-007	BUSHING - MACHINERY	2
21	065764-000	SCISSOR CHOCK WELDMENT X15/19	1
22	011256-012	SCREW HHC 1/2-13UNC X 1 1/2	4
23	011240-008	WASHER 1/2 STD FLAT	8
24	011248-008	LOCKNUT 1/2-13 UNC ESNA	4
25	067318-000	SWITCH BRACKET	1
26	067193-001	SWITCH ASSY	1
27	011252-006	SCREW - 1/4-20 UNC X 3/4	2





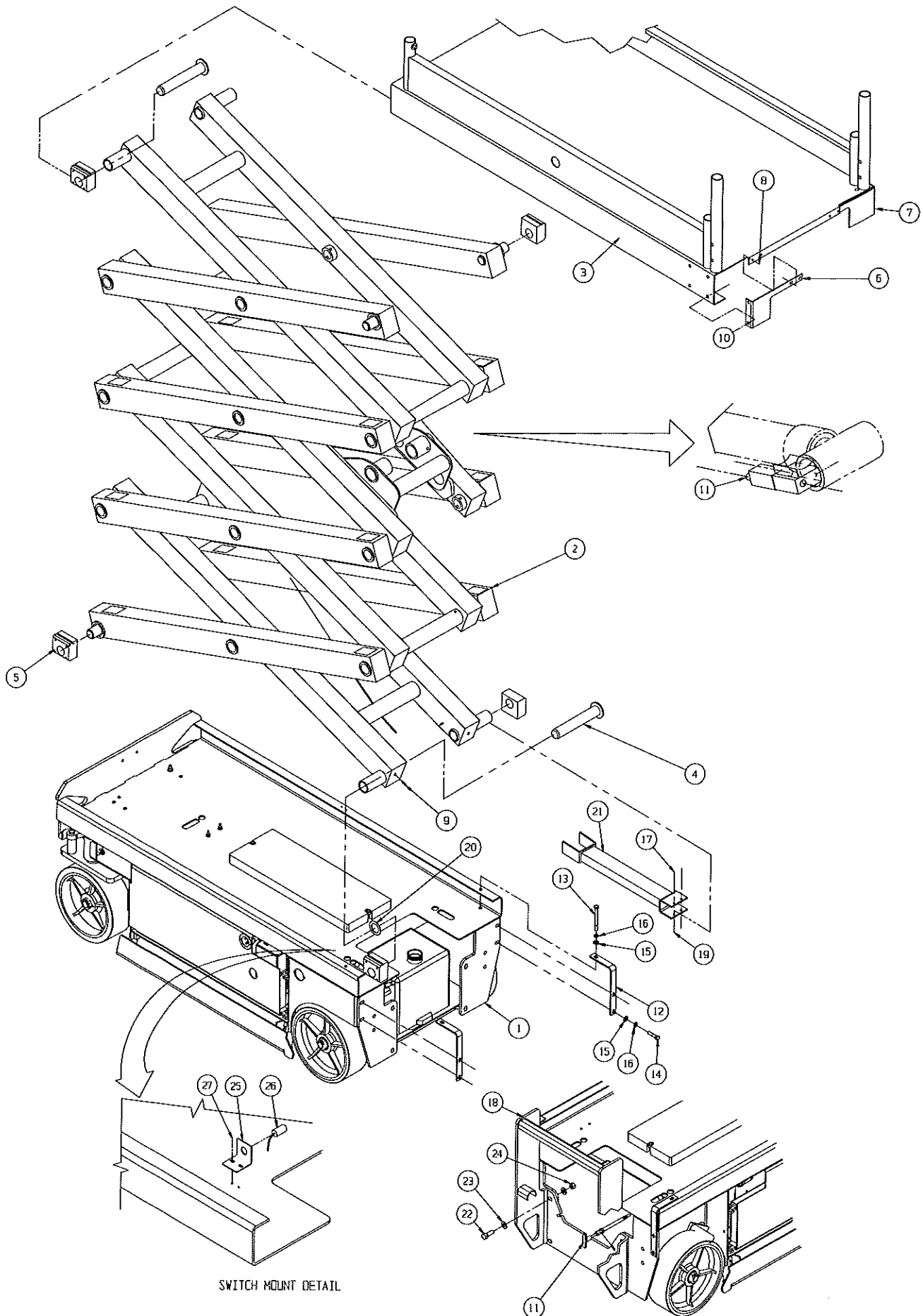
SWITCH MOUNT DETAIL

## Basic Assembly - MX19

### 065701-030

ITEM	PART	DESCRIPTION	QTY
1	065602-030	CHASSIS ASS'Y	1
2	065705-020	SCISSOR ARM ASS'Y X19	1
3	066250-001	PLATFORM WELDMENT	1
4	065698-000	LOWER PIVOT PIN WELDMENT	4
5	065726-000	SLIDE PAD	8
6	065728-000	DECK BRACKET L.H.	1
7	065727-000	DECK BRACKET R.H.	1
8	014027-006	SCREW HHD SLFTP 1/4-28 x 3/4	4
9	011739-020	ROLLPIN 3/8 DIA. x 2 1/2	4
10	014066-008	SCREW SLFTP 1/4-AB x 1	16
11	065754-006	EMERGENCY LOWERING CABLE	1
12	065937-001	BEARING RETENTION ANGLE	2
13	011254-034	SCREW HHC 3/8-16UNC X 4 1/4	2
14	011254-014	SCREW HHC 3/8-16UNC X 1 3/4	4

ITEM	PART	DESCRIPTION	QTY
15	011240-006	WASHER 3/8 STD FLAT	4
16	011238-006	LOCK WASHER - 3/8" SPLIT RING	6
17	011829-022	CARRIAGE BOLT 1/4-20 X 2-3/4 PLATED	2
18	066307-005	LADDER WELDMENT	1
19	011248-004	LOCKNUT 1/4-20 UNC ESNA	2
20	011786-007	BUSHING - MACHINERY	2
21	065764-000	SCISSOR CHOCK WELDMENT X15/19	1
22	011256-012	SCREW HHC 1/2-13UNC X 1 1/2	4
23	011240-008	WASHER 1/2 STD FLAT	8
24	011248-008	LOCKNUT 1/2-13 UNC ESNA	4
25	067318-000	SWITCH BRACKET	1
26	067193-001	SWITCH ASSY	1
27	011252-006	SCREW - 1/4-20 UNC X 3/4	2




## Scissor Arm Assembly - MX15

### 065605-020

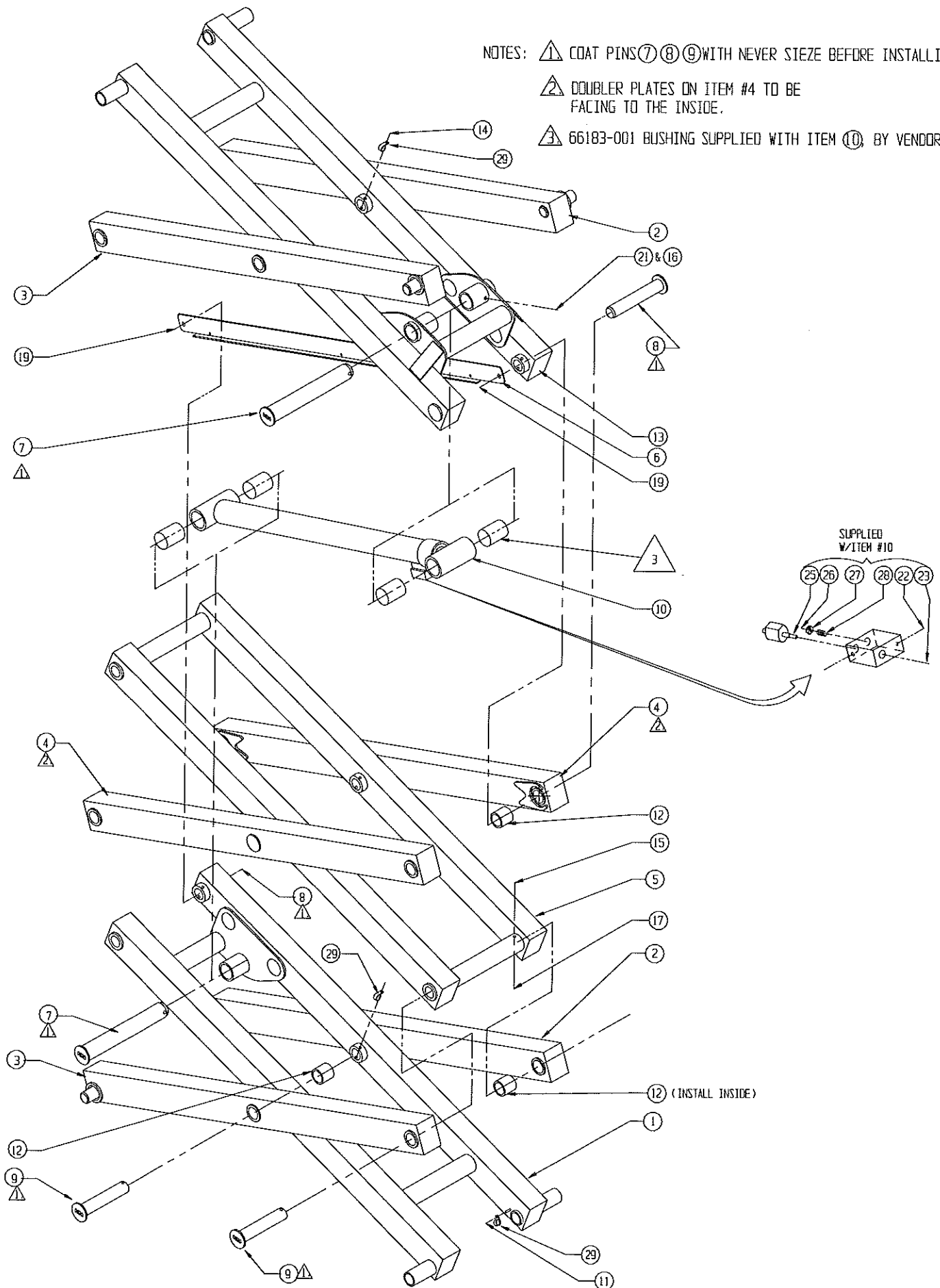
ITEM	PART	DESCRIPTION	QTY
1	065640-000	INNER ARM WELDMENT	1
2	065671-000	OUTER BEAM EWLDMENT R.H.	2
3	065672-000	OUTER BEAM WELDMENT L.H.	2
4	065675-001	OUTER BEAM WELDMENT	2
5	065677-000	INNER CENTER BEAM WELDMENT	1
6	065687-000	CABLE GUIDE	1
7	065696-000	CYLINDER PIN WELDMENT	2
8	065697-000	PIN KEEPER WELDMENT	2
9	065920-000	PIVOT PIN WELDMENT	12
10	065372-021	LIFT CYLINDER ASSY.	1
	065372-012	SEAL KIT, LIFT CYLINDER	
11	011248-004	LOCKNUT 1/4-20UNC HEX	1
12	066183-002	BUSHING	14
13	065640-001	INNER ARM WELDMENT	1

ITEM	PART	DESCRIPTION	QTY
14	011253-024	SCREW 5/16-18UNC HHC X 3	3
15	011253-022	SCREW 5/16-18UNC HHC X 2 3/4	11
16	011254-026	SCREW 3/8-16UNC HHC X 3 1/4	2
17	011248-005	LOCKNUT 5/16-18UNC HEX	14
19	065688-000	GUARD RIVET	2
21	011248-006	LOCKNUT 3/8-16UNC HEX	2
22	012004-004	PLUG #4	REF
23	012004-006	PLUG #6	REF
25	066179-000	VALVE	REF
26	011941-005	FITTING 6MB-6MJ ST	REF
27	015919-001	ORIFICE #840	REF
28	05133-000	SPRING	REF
29	013919-009	CLAMP	3

NOTES:  COAT PINS ⑦ ⑧ ⑨ WITH NEVER SIEZE BEFORE INSTALLING

 DOUBLER PLATES ON ITEM #4 TO BE FACING TO THE INSIDE.

 66183-001 BUSHING SUPPLIED WITH ITEM ⑩ BY VENDOR.

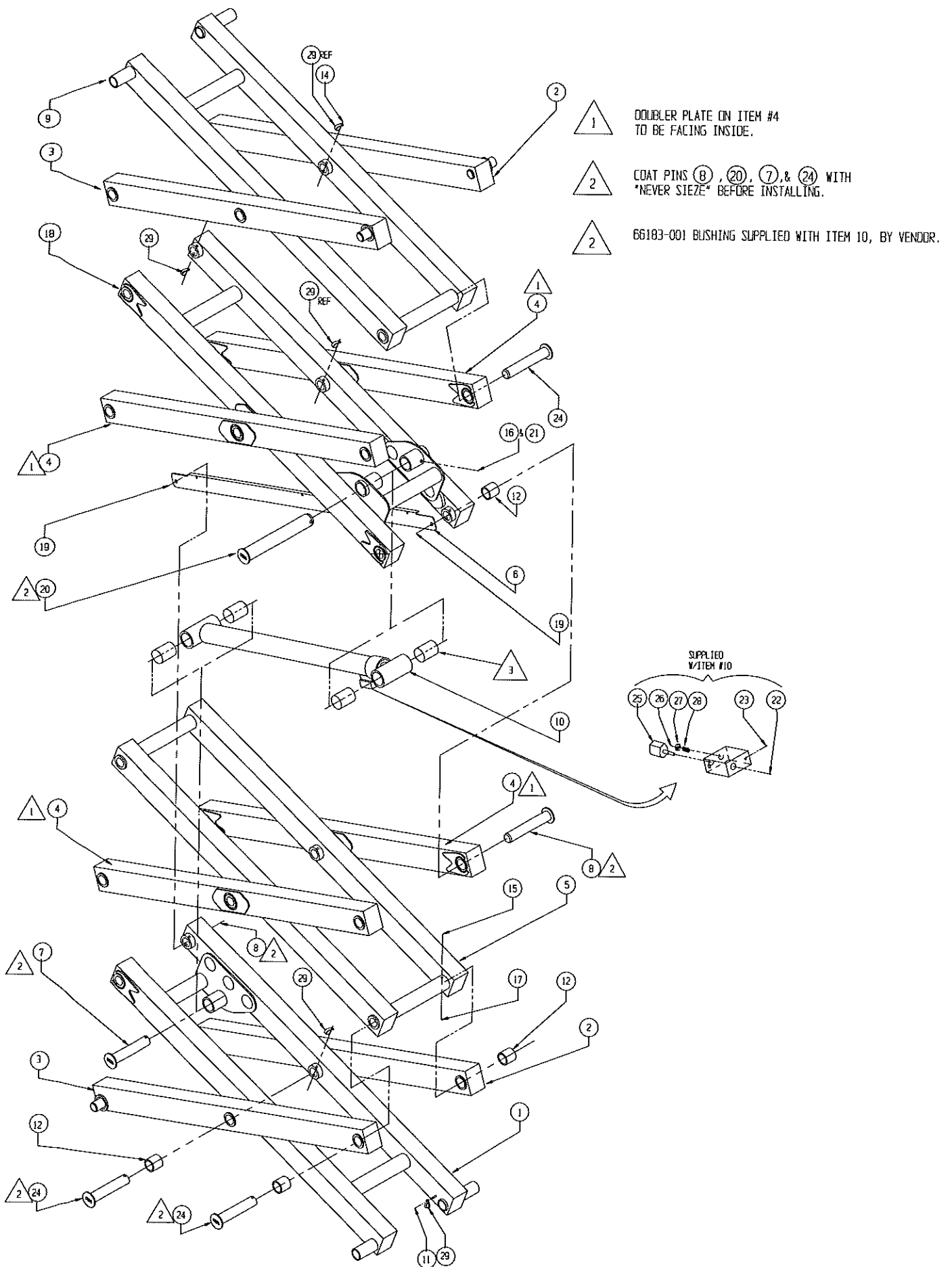


# Scissor Arm Assembly - MX19

## 065705-020

ITEM	PART	DESCRIPTION	QTY
1	065640-001	INNER ARM WELDMENT	1
2	065671-000	OUTER BEAM WELDMENT R.H.	2
3	065672-000	OUTER BEAM WELDMENT L.H.	2
4	065675-000	OUTER BEAM WELDMENT	4
5	065677-000	INNER CENTER BEAM WELDMENT	1
6	065687-000	CABLE GUIDE	1
7	065696-000	CYLINDER PIN WELDMENT	1
8	065697-000	PIN KEEPER WELDMENT	2
9	065721-000	UPPER BEAM WELDMENT	1
10	065372-021	LIFT CYLINDER ASSY.	1
	065372-012	SEAL KIT, LIFT CYLINDER	
11	011248-004	LOCKNUT 1/4-20UNC HEX	1
12	066183-002	BUSHING	20
14	011253-024	SCREW 5/16-18UNC HHC X 3	4
15	011253-022	SCREW 5/16-18UNC HHC X 2 3/4	16

ITEM	PART	DESCRIPTION	QTY
16	011254-026	SCREW 3/8-16UNC HHC X 3 1/4	2
17	011248-005	LOCKNUT 5/16-18UNC HEX	20
18	065722-000	INNER BEAM WELDMENT	1
19	065688-000	GUARD RIVET	2
20	065750-000	CYLINDER PIN WELDMENT	1
21	011248-006	LOCKNUT 3/8-16UNC HEX	2
22	012004-004	PLUG #4	REF
23	012004-006	PLUG #6	REF
24	065920-000	PIVOT PIN WELDMENT	18
25	066179-000	VALVE	REF
26	011941-005	FITTING 6MB-6MJ ST	REF
27	015919-001	ORIFICE	REF
28	05133-000	SPRING	REF
29	013919-009	CLAMP	4

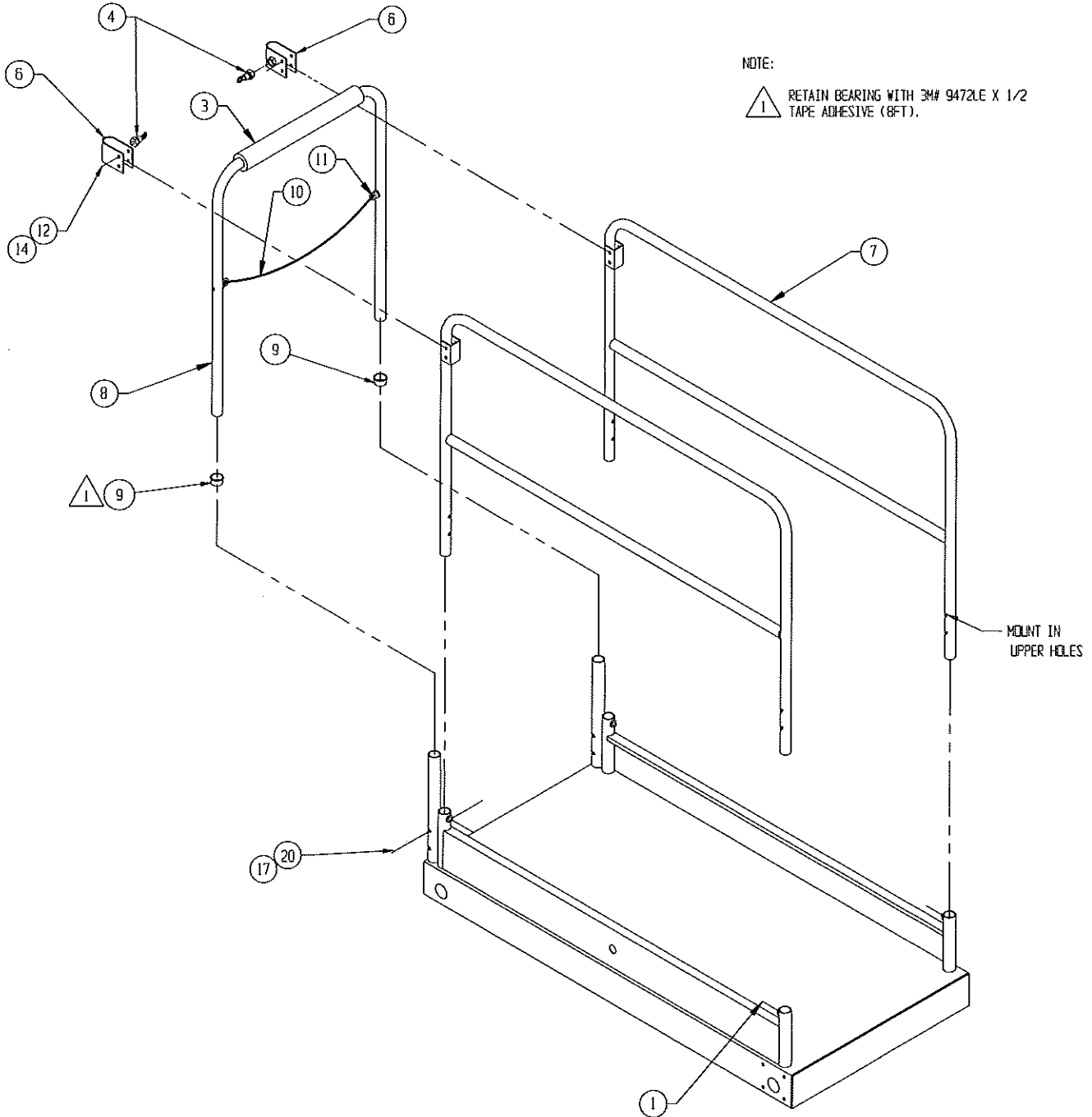


# Platform Guardrail Installation

## 065603-004

ITEM	PART	DESCRIPTION	QTY
1	066171-003	TAP BOLT 3/8-16 X 2 (FULL THREAD)	4
3	066692-022	FOAM TUBING	1
4	03570-000	RETAINING PIN ASSY	2
6	066498-000	WELDMENT, GATE LATCH	2
7	066257-007	WELDMENT SIDE RAIL	2
8	066261-001	WELDMENT, END RAIL	1
9	065987-000	CAPLUG BEARING	2

ITEM	PART	DESCRIPTION	QTY
10	063133-003	CHAIN ASSY	1
11	015748-002	REPAIR LINK	1
12	011248-005	NUT 5/16-18	4
14	011253-018	SCREW 5/16-18 HHC X 2 1/4	4
17	011254-018	SCREW 3/8-16 HHC X 2 1/4	2
20	011248-006	NUT 3/8-16 HEX	2



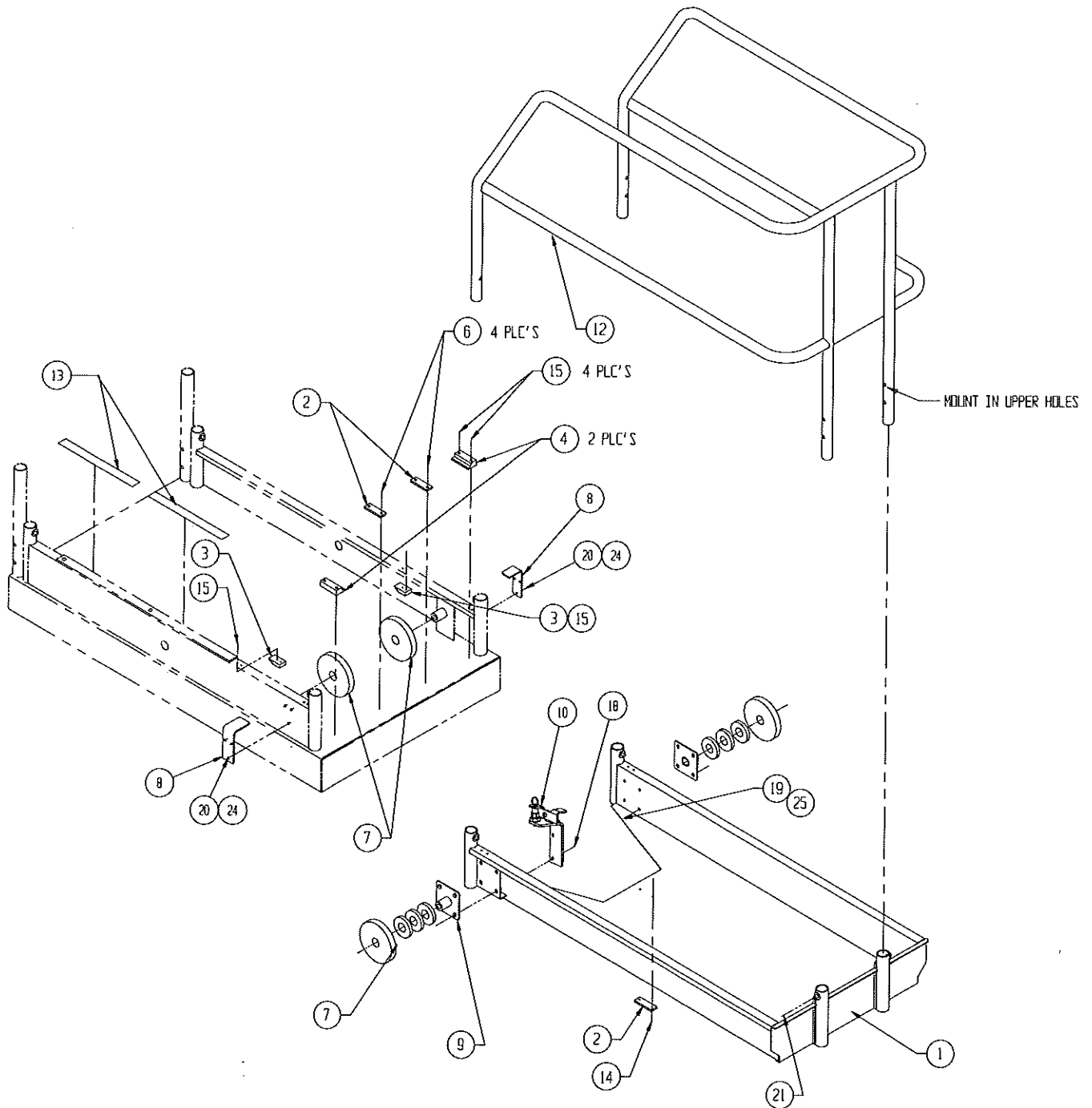


# Deck Extension Assembly

## 065614-000

ITEM	PART	DESCRIPTION	QTY
1	066251-001	WELDMENT DECK EXT.	1
2	066198-000	WEAR PAD	3
3	066193-000	STOP	2
4	066176-000	WEAR PAD	2
6	026553-002	RIVET 3/16 DIA X .126-.250	4
7	066195-000	PLATFORM ROLLER	4
8	066407-011	BRACKET	2
9	066256-000	WELDMENT ROLLER MOUNT	2
10	067185-000	WELDMENT DECK STOP	1
12	066260-001	WELDMENT EXT. RAIL X15	1

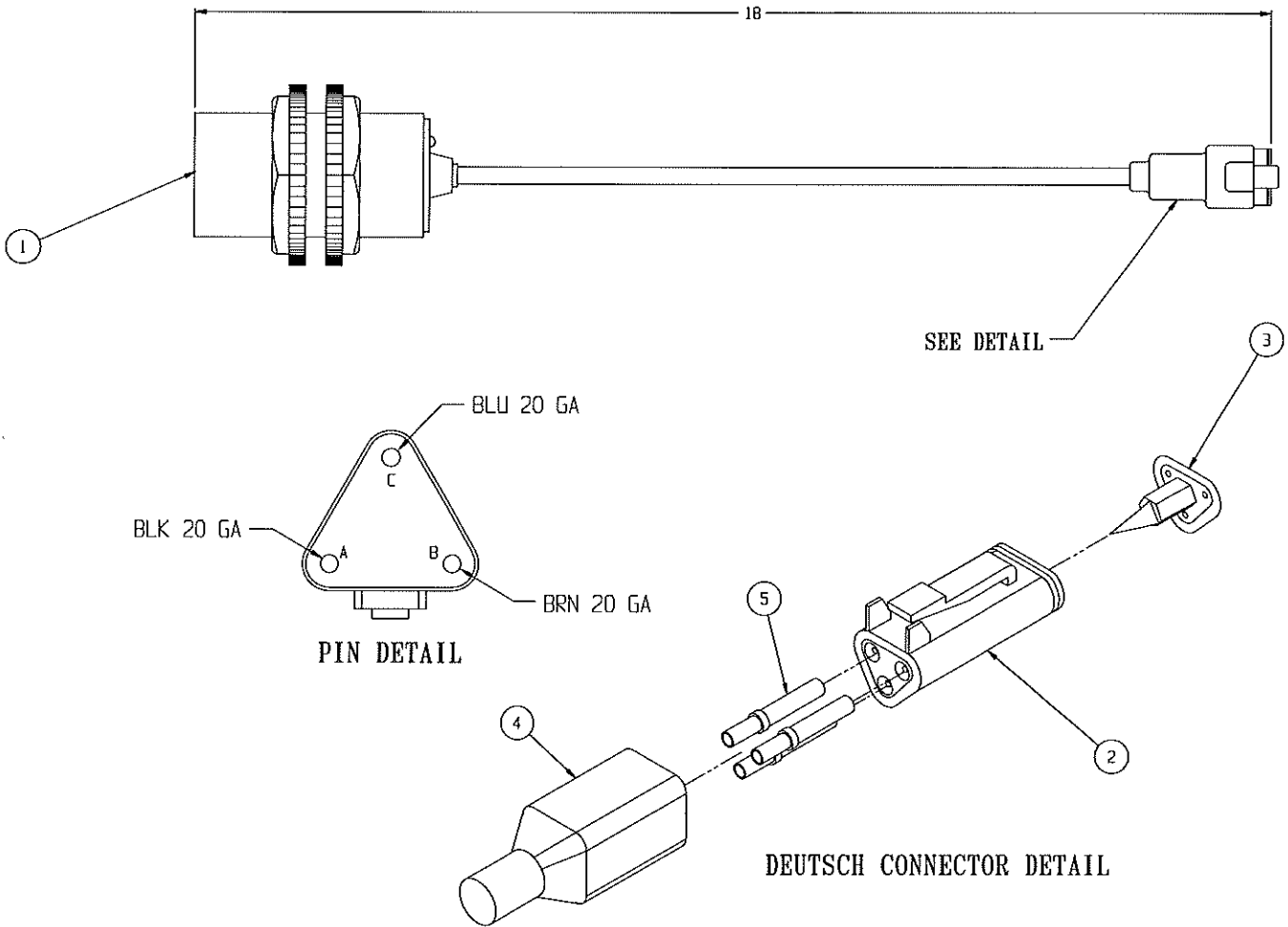
ITEM	PART	DESCRIPTION	QTY
13	065988-099	TAPE UHMW 1"	FT 3
14	026553-004	RIVET 3/16 DIA X 3/8 GRIP	2
15	026553-008	RIVET 3/16 DIA X 1/2 GRIP	8
18	011254-016	SCREW HHC 3/8-16 X 2	2
19	011254-014	SCREW HHC 3/8-16 X 1 3/4	6
20	011252-006	SCREW HHC 1/4-20 X 3/4	8
21	066171-003	BOLT TAP 3/8-16UNC X 2	4
24	011240-004	WASHER 1/4 FLAT	16
25	011238-006	WASHER 3/8 LOCK	8
26	014996-020	WASHER SAE 1-1/4 ZINC PLATED	6



# Proximity Switch Assembly

## 067193-001

ITEM	PART	DESCRIPTION	QTY
1	REF.	PROX. SWITCH, LOCON IKCT3014	1
2	067456-000	CONNECTOR, DEUTSCH #DT06-3S-P012	1
3	067456-002	LOCKING WEDGE, DEUTSCH #W3S-P012	1
4	067456-005	BOOT, DEUTSCH #DT3S-BT	1
5	068762-003	CONTACT, DEUTSCH #0462-201-16141	3



---

**NOTES:**

---

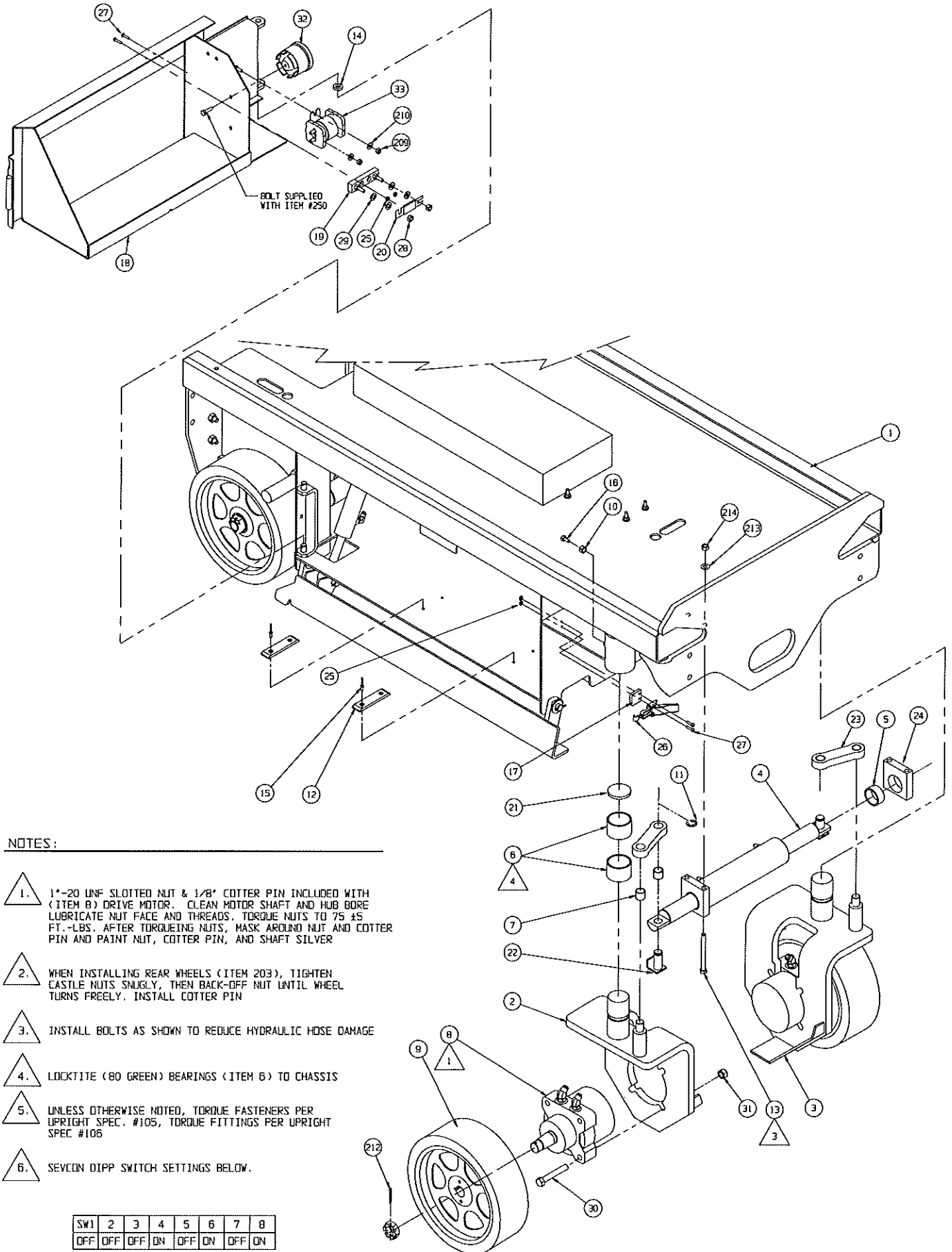
# Chassis Assembly

## 065602-030

ITEM	PART	DESCRIPTION	QTY
1	065620-020	CHASSIS WELDMENT X15	1
2	065690-010	YOKE WELDMENT R.H. X15	1
3	065691-010	YOKE WELDMENT L.H. X15	1
4	113051-000	STEERING CYLINDER ASSEMBLY	1
5	027931-072	BEARING	2
6	027931-059	BEARING	4
7	027931-022	BEARING	4
8	113050-000	DRIVE MOTOR ASSEMBLY	2
9	065743-005	DRIVE WHEEL	2
10	011273-006	NUT HEX 3/8-16 JAM	2
11	013315-010	RING, RETAINING "E"	2
12	063728-001	SLIDE BLOCK	4
13	011254-032	SCREW HHC 3/8-16 x 4	4
14	011782-010	THRUST WASHER 1/2 X 7/8 X 3/16 LG	2
15	026553-004	RVT POP 3/16 DIA. .25-.38 GRIP	8
16	011705-016	SCREW SET 3/8-16 x 1 HEX SOC	2
17	064754-000	SPACER LATCH	2

ITEM	PART	DESCRIPTION	QTY
18	065650-001	TRAY WELDMENT R.H. X15/19	1
19	010149-000	FUSE BLOCK	1
20	010148-001	FUSE 175 AMP.	1
21	065733-000	THRUST PAD 1/4 UHMW	2
22	065800-000	WELDMENT, STEER PIN	2
23	065731-000	STEER LINK X15/19	2
24	065732-000	STEER GUIDE	2
25	011248-002	LOCK NUT 8-32	6
26	005299-000	LATCH TOGGLE	2
27	011708-006	SCREW MACH RD HD 8-32 x 3/4	6
28	011248-005	LOCK NUT 5/16-18	2
29	011240-005	WASHER FLAT STD 5/16	4
30	011256-026	SCREW HHC 1/2-13 x 3-1/4	8
31	011248-008	LOCK NUT 1/2-13	8
32	066807-001	ALARM DUAL TONE	1
33	010122-001	SOLENOID RELAY, MOTOR	1

**Drawing #1 of 3**



**NOTES:**

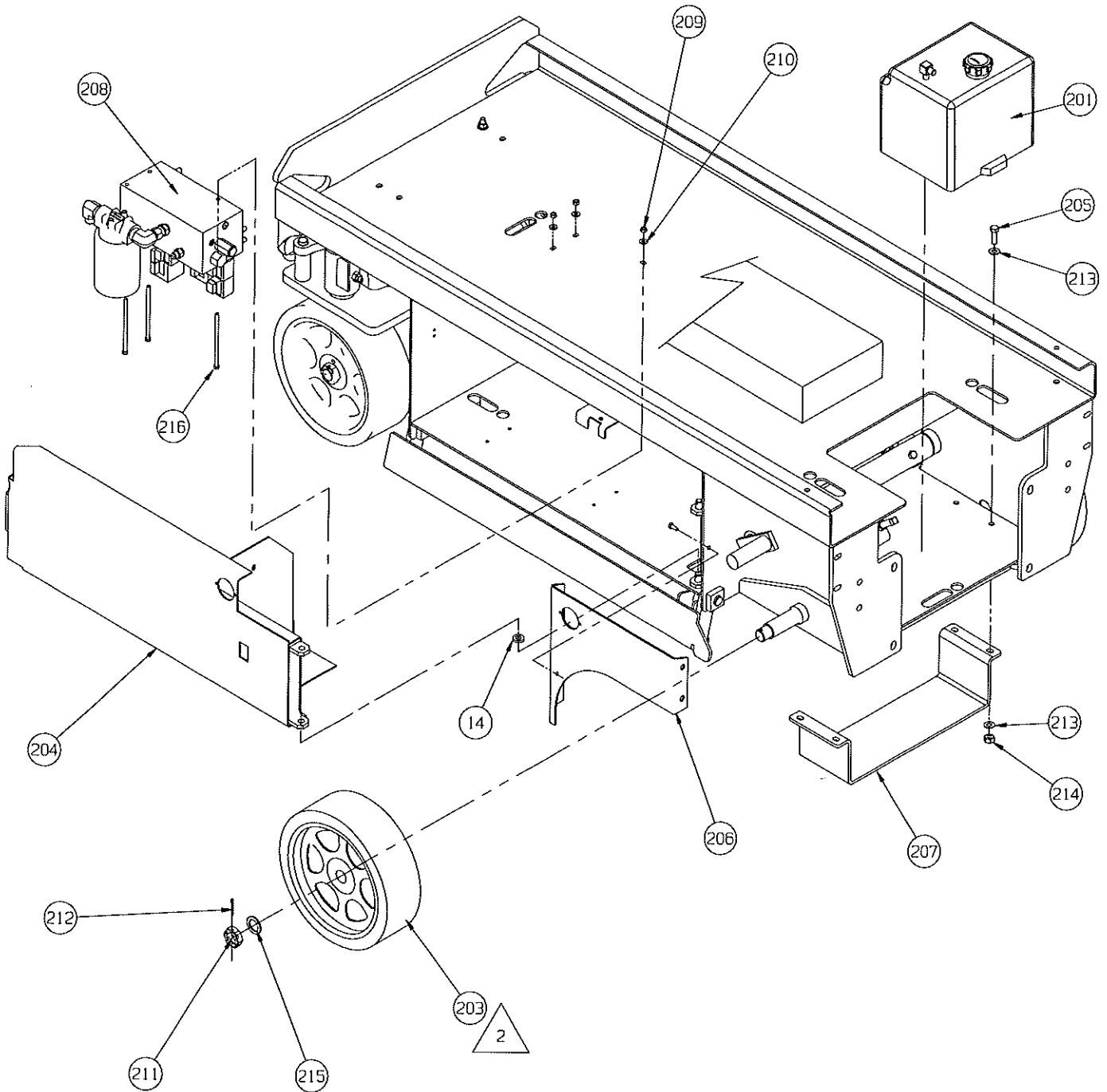
- 1. 1"-20 UNF SLOTTED NUT & 1/8" COTTER PIN INCLUDED WITH (ITEM 8) DRIVE MOTOR. CLEAN MOTOR SHAFT AND HUB BORE LUBRICATE NUT FACE AND THREADS. TORQUE NUTS TO 75 ±5 FT.-LBS. AFTER TORQUING NUTS, MASK AROUND NUT AND COTTER PIN AND PAINT NUT, COTTER PIN, AND SHAFT SILVER
- 2. WHEN INSTALLING REAR WHEELS (ITEM 203), TIGHTEN CASTLE NUTS SLUGLY, THEN BACK-OFF NUT UNTIL WHEEL TURNS FREELY. INSTALL COTTER PIN
- 3. INSTALL BOLTS AS SHOWN TO REDUCE HYDRAULIC HOSE DAMAGE
- 4. LOCKTITE (80 GREEN) BEARINGS (ITEM 6) TO CHASSIS
- 5. UNLESS OTHERWISE NOTED, TORQUE FASTENERS PER UPRIGHT SPEC. #105, TORQUE FITTINGS PER UPRIGHT SPEC #106
- 6. SEVCOR DIPP SWITCH SETTINGS BELOW.

SW1	2	3	4	5	6	7	8
	OFF	OFF	OFF	ON	OFF	ON	OFF
	ON	ON	ON	ON	ON	ON	ON

**Drawing #2 of 3**

ITEM	PART	DESCRIPTION	QTY
201	101152-001	HYDRAULIC TANK ASSY X15	1
203	065744-021	IDLER WHEEL ASSEMBLY	2
204	065657-002	TRAY WELDMENT L.H.	1
205	011254-010	SCREW HHC 3/8-16 X 1 1/4	8
206	065979-002	WHEEL COVER WELDMENT L.H.	1
207	065270-000	FORKLIFT POCKET	1
208	113052-000	VALVE BLOCK ASSEMBLY	1
209	011248-004	LOCK NUT 1/4-20	11

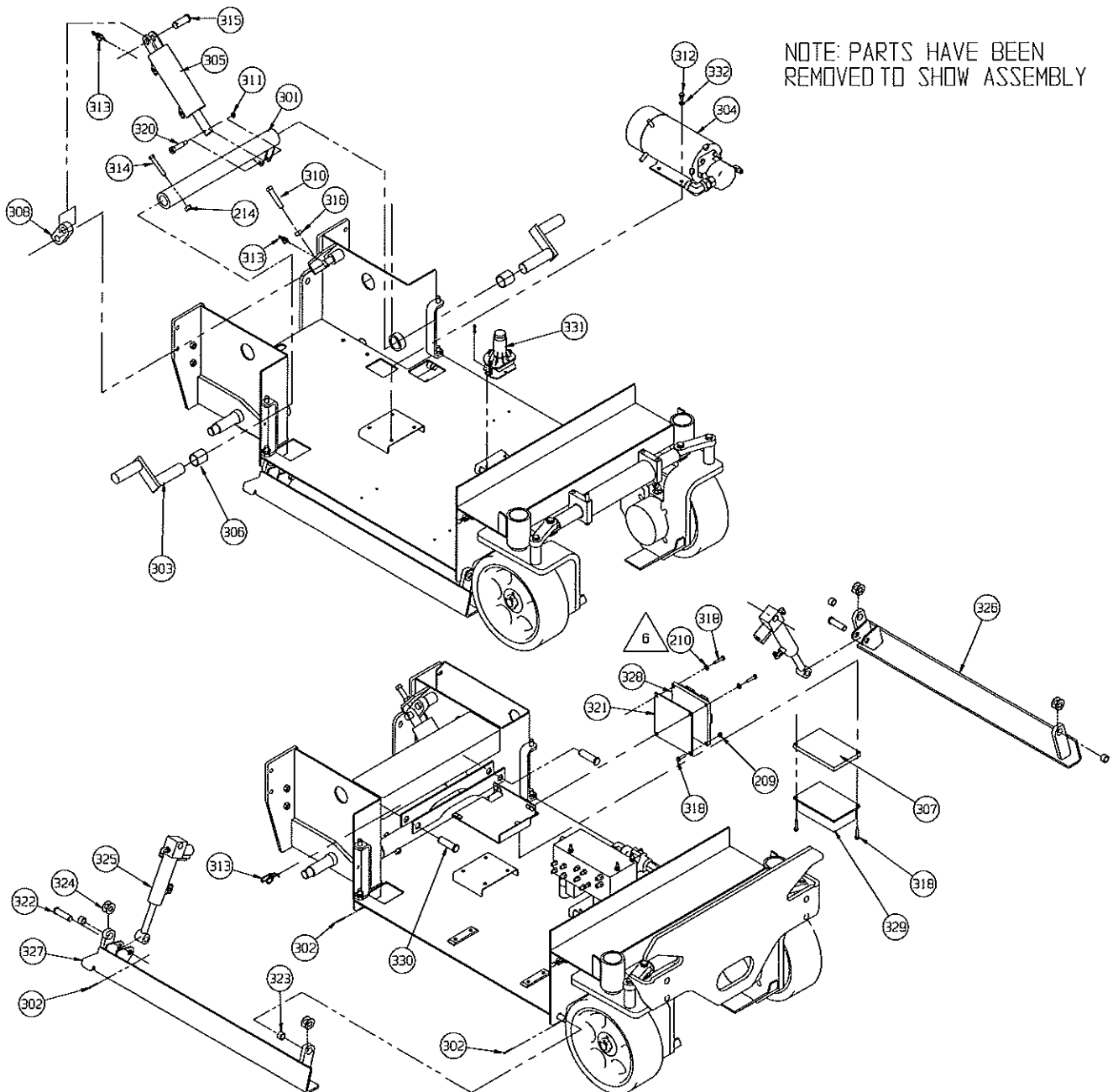
ITEM	PART	DESCRIPTION	QTY
210	011240-004	WASHER FLAT STD 1/4	9
211	015945-016	NUT SLOTTED HEX JAM 1-14 UNF	2
212	011754-012	COTTER PIN 5/32 X 1-1/2	4
213	011240-006	WASHER FLAT STD 3/8	20
214	011248-006	LOCK NUT 3/8-16	14
215	063329-008	WASHER, FLAT 1" I.D. 1 1/2" O.D.	2
216	011252-040	SCREW HHC 1/4-20 UNC X 5	3



**Drawing #3 of 3**

ITEM	PART	DESCRIPTION	QTY
301	065678-000	BRAKE PIVOT WELDMENT	1
302	011753-012	COTTER PIN 1/8 X 1 1/2	6
303	065685-000	BRAKE ACTUATOR WELDMENT	2
304	113055-000	POWER UNIT ASSEMBLY	1
305	113054-000	CYL. ASSEMBLY - BRAKE	1
306	027931-071	BEARING	2
307	065984-000	HEAT SINK	1
308	066322-000	CYLINDER LINK	1
310	066096-020	SCREW 1/2-13UNC SQ HD x 2 1/2	1
311	011246-005	LOCK NUT 5/16-18 THIN	1
312	011254-004	SCREW HHC 3/8-16 X 1/2	4
313	011757-010	COTTER RUE RING	4
314	011254-020	SCREW HHC 3/8-16 x 2-1/2	2
315	011848-041	CLEVIS PIN 3/4 x 2	1
316	011273-008	NUT 1/2-13 JAM HEX	1

ITEM	PART	DESCRIPTION	QTY
318	012553-012	SCREW, SOCKET HD 1/4-20UNC X 1-1/2	2
320	063559-006	SHOULDER BOLT 3/8 x 2	1
321	065264-000	PLATE - CIRCUIT BOARD	1
322	011848-036	CLEVIS PIN 5/8 X 2 1/4	2
323	011780-040	BEARING 5/8 X 13/16 X 1/2 LG	4
324	014996-010	WASHER 5/8 SAE FLAT PLATED	8
325	113053-000	CYL. ASSY - DEPRESSION RAIL	2
326	065971-020	DEPRESSION RAIL WELDMENT L.H.	1
327	065971-021	DEPRESSION RAIL WELDMENT R.H.	1
328	065709-001	CIRCUIT BOARD	1
329	065708-001	MOTOR CONTROL	1
330	011848-019	CLEVIS PIN 3/4 X 2 1/2	2
331	(SEE FINAL)	LEVEL SENSOR	REF
332	011240-006	3/8 FLAT WASHER	4



# Hose Kit Installation

## 065611-021

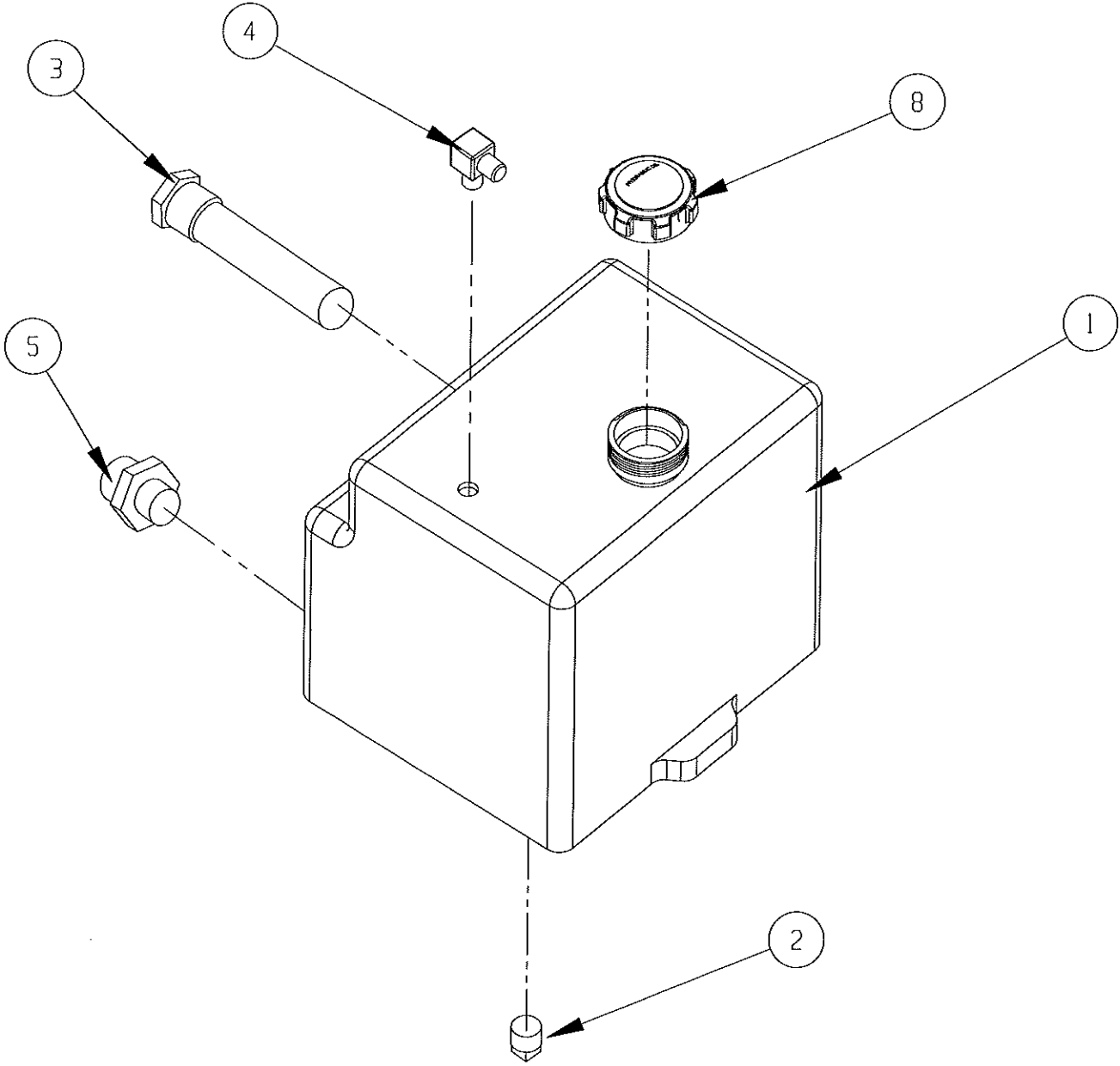
ITEM	PART	DESCRIPTION	QTY	ITEM	PART	DESCRIPTION	QTY
1	101244-037	HOSE ASSY 3/8 X 37 (6FJX-6FJX)	1	14	061789-017	HOSE ASSY 3/4 X 17 1/2 (12FJX-12MP)	1
2	101243-034	HOSE ASSY 3/8 X 34 (6FJX-6FJX X 90)	2	15	064156-021	HOSE ASSY 1/2 x 42 (8FJX-8FJX)	1
3	068965-150	HOSE ASSY 3/8 X 150 (6FJX-6FJX X 90)	1	17	107095-038	HOSE ASSY 1/4 X 38 (4FJX-4FJX90)	1
5	107096-013	HOSE ASSY 3/8 X 13 (6FJX-6FJX X 90)	1	19	107095-032	HOSE ASSY 1/4 X 32	1
8	107095-054	HOSE ASSY 1/4 X 54 (4FJX-4FJX X 90)	1	19	107095-032	(4FJX-4FJX X 90)	1
11	107095-031	HOSE ASSY 1/4 X 31 (4FJX-4FJX X 90)	2	20	107095-037	HOSE ASSY 1/4 X 37	2
12	061351-045	HOSE ASSY 1/8 X 13 (4FJX-4FJX)	1	20	107095-037	(4FJX-4FJX X 90)	2





# Hydraulic Tank Assembly 101152-001

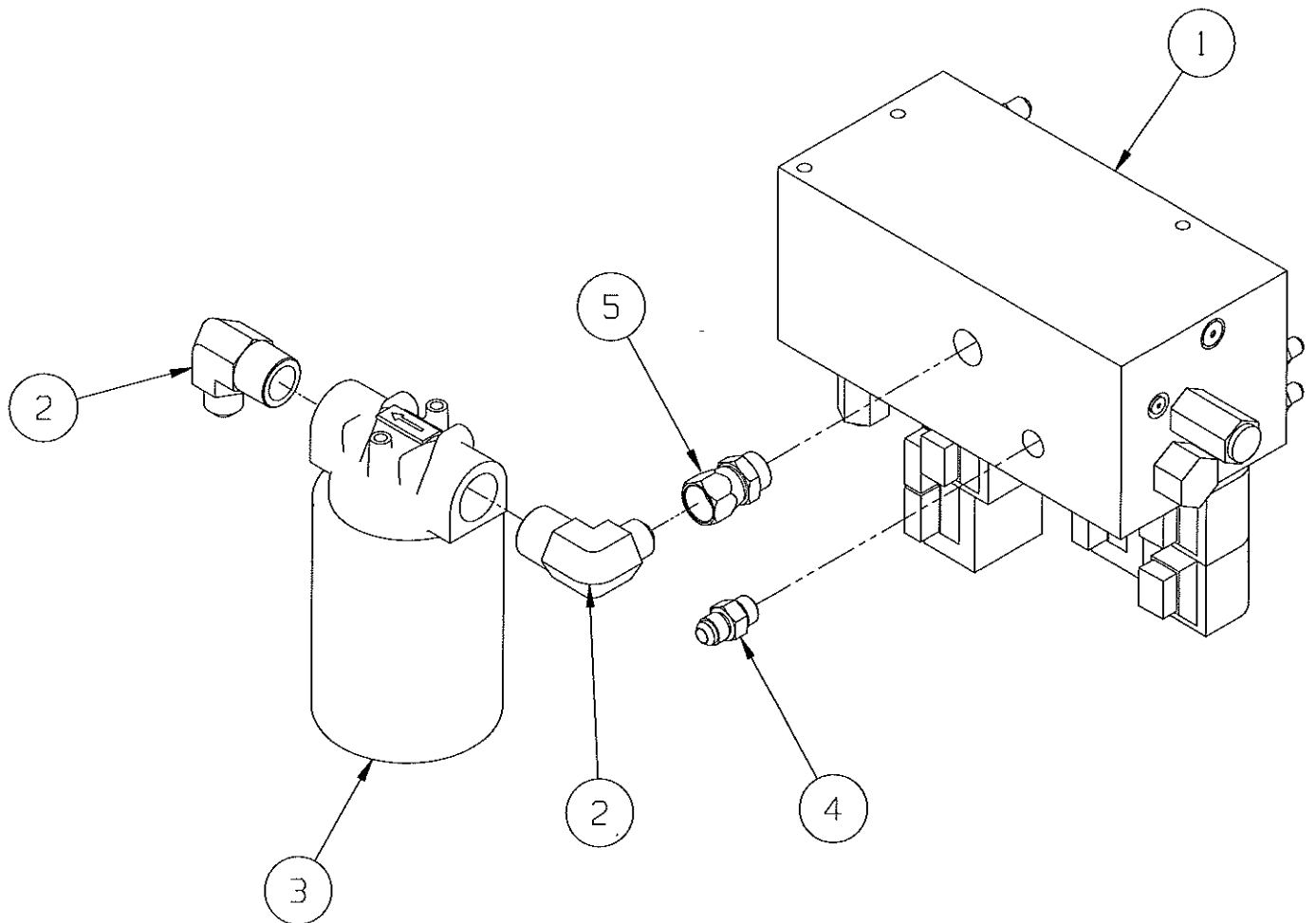
ITEM	PART	DESCRIPTION	QTY
1	101056-001	TANK, HYDRAULIC	1
2	021305-006	PLUG, MAGNETIC	1
3	061818-000	STRAINER, SUCTION	1
4	011940-006	FITTING ELBOW, 4MP-6MJ	1
5	011939-006	FITTING, 8MP-8MJ	1
8	068982-001	HYDRAULIC TANK LID	1



# Valve Block Assembly

## 113052-000

ITEM	PART	DESCRIPTION	QTY
1	101120-122	VALVE BLOCK ASSY.	1
2	011940-018	FITTING, 8MJ-12MP 90 DEG	2
3	005154-001	FILTER	1
4	011941-005	FITTING, 6MB-6MJ	1
5	064170-005	FITTING, 8MB-8FJX	1

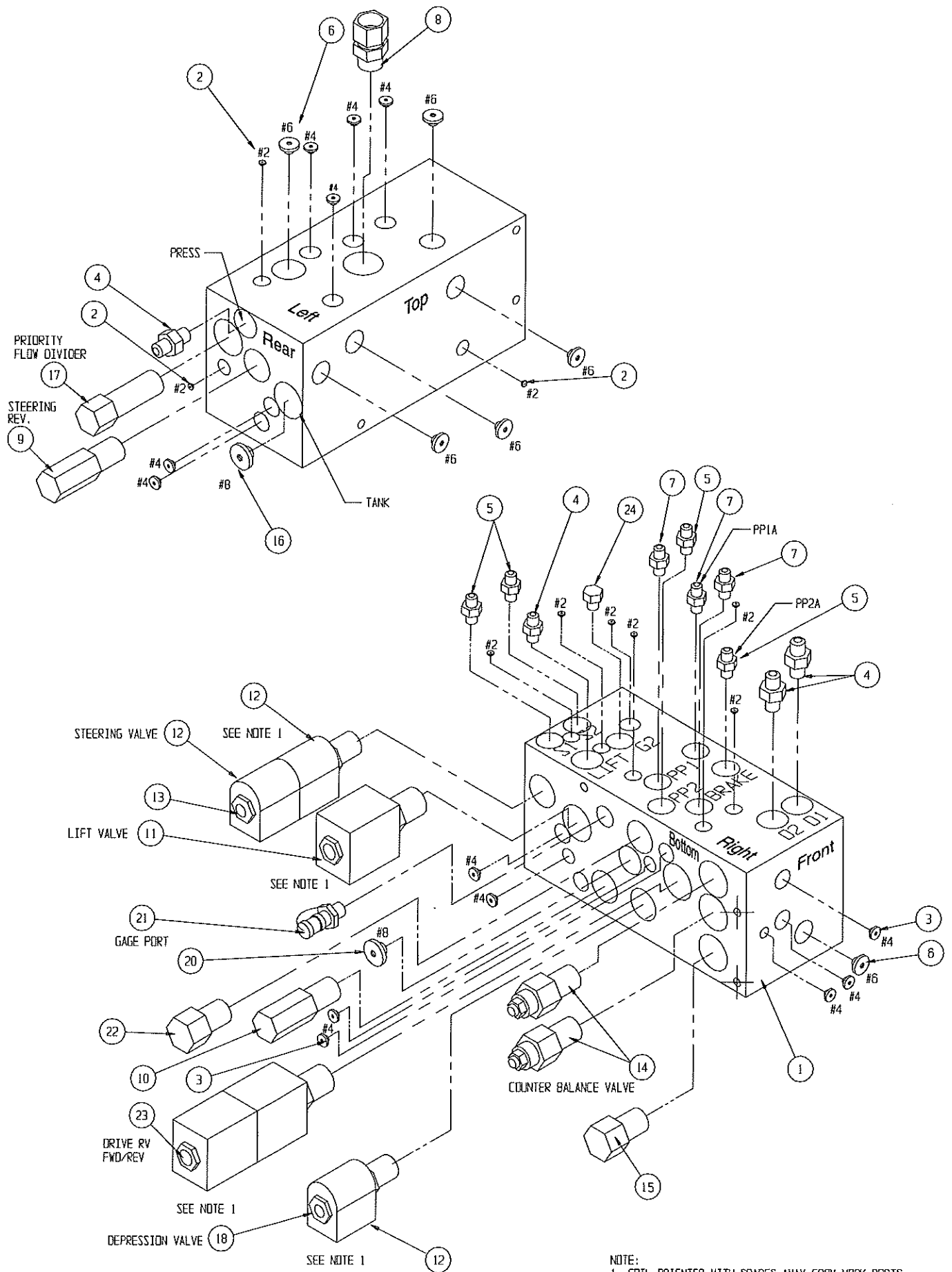


# Valve Block

## 101120-122

ITEM	PART	DESCRIPTION	QTY.
1	100020-040	CONTROL VALVE BLOCK	1
2	012004-002	FITTING #2 PLUG	9
3	012004-004	FITTING #4 PLUG	15
4	011941-005	FITTING STRAIGHT 6MB - 6MJ	4
5	011941-001	FITTING STR 4MBH - 4MJ	4
6	012004-006	FITTING PLUG #6	6
7	031006-004	FITTING STR 4MB-4MJ W/.031 ORIFICE	3
8	064170-005	FITTING 8MB-8FJX	1
9	060390-017	RELIEF VALVE, STEERING	1
10	060390-025	RELIEF VALVE, MAIN	1
11	063923-006	2 POS - 4 WAY SOLENOID W/ COIL	1
12	101120-033	COIL	2

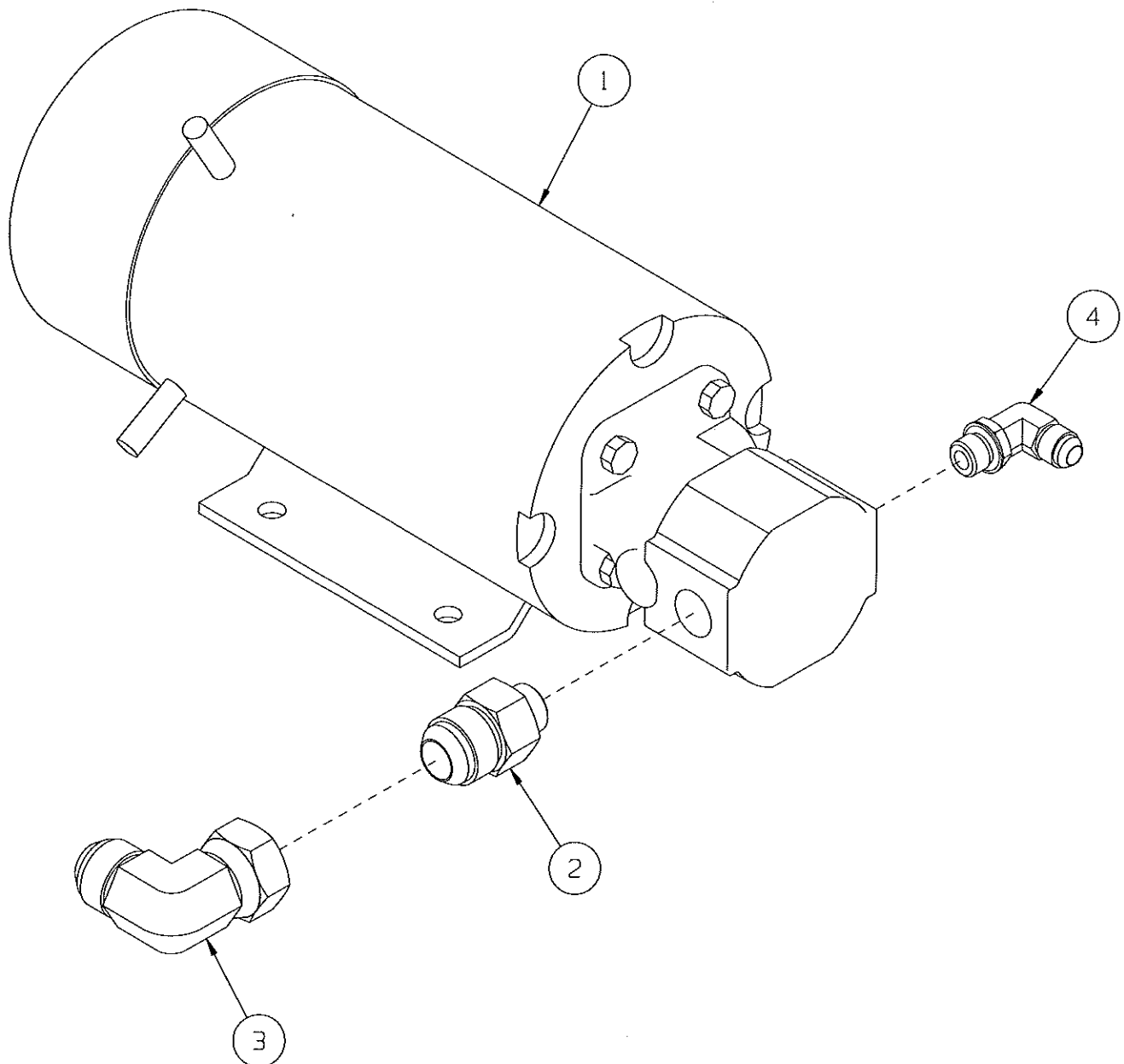
ITEM	PART	DESCRIPTION	QTY.
13	064845-000	3 POS - 4 WAY SOLENOID W/ COILS	1
14	101120-035	COUNTERBALANCE VALVE	2
15	060390-025	VALVE RELIEF	1
16	020021-008	FITTING PLUG #8	1
17	064843-000	FLOW DIVIDER VALVE	1
18	063973-001	2 POS POPPET VALVE W/ COIL	1
19	101120-033	COIL	1
20	012004-008	FITTING, #8 PLUG	1
21	063965-001	FITTING GAUGE	1
22	064841-000	CHECK VALVE	1
23	063923-021	3 POS - 4 WAY SOLENOID W/ COILS	1
24	020021-004	FITTING, HEX PLUG #4	1



# Power Unit Assembly

## 113055-000

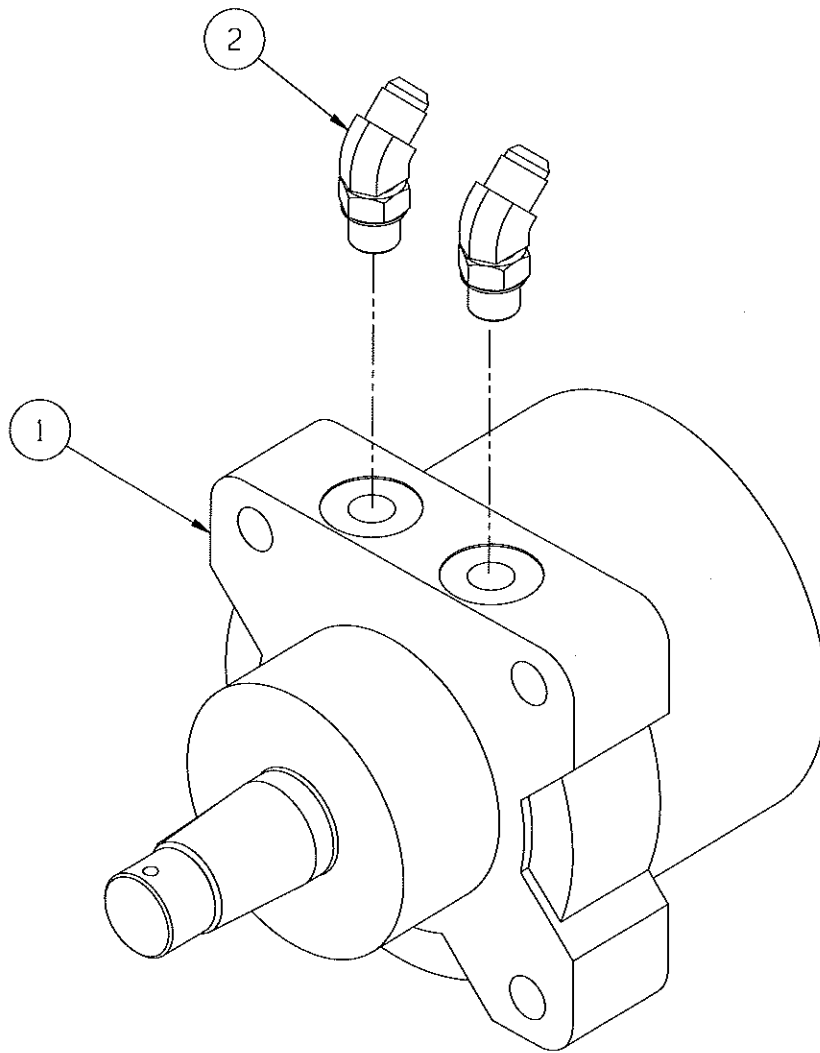
ITEM	PART	DESCRIPTION	QTY
1	101230-000	POWER UNIT	1
2	011941-012	FITTING, 8MB-12MJ	1
3	011937-007	FITTING, 12FJX-12MJ 90	1
4	011934-004	FITTING, 6MB-6MJ 90	1



# Drive Motor Assembly

## 113050-000

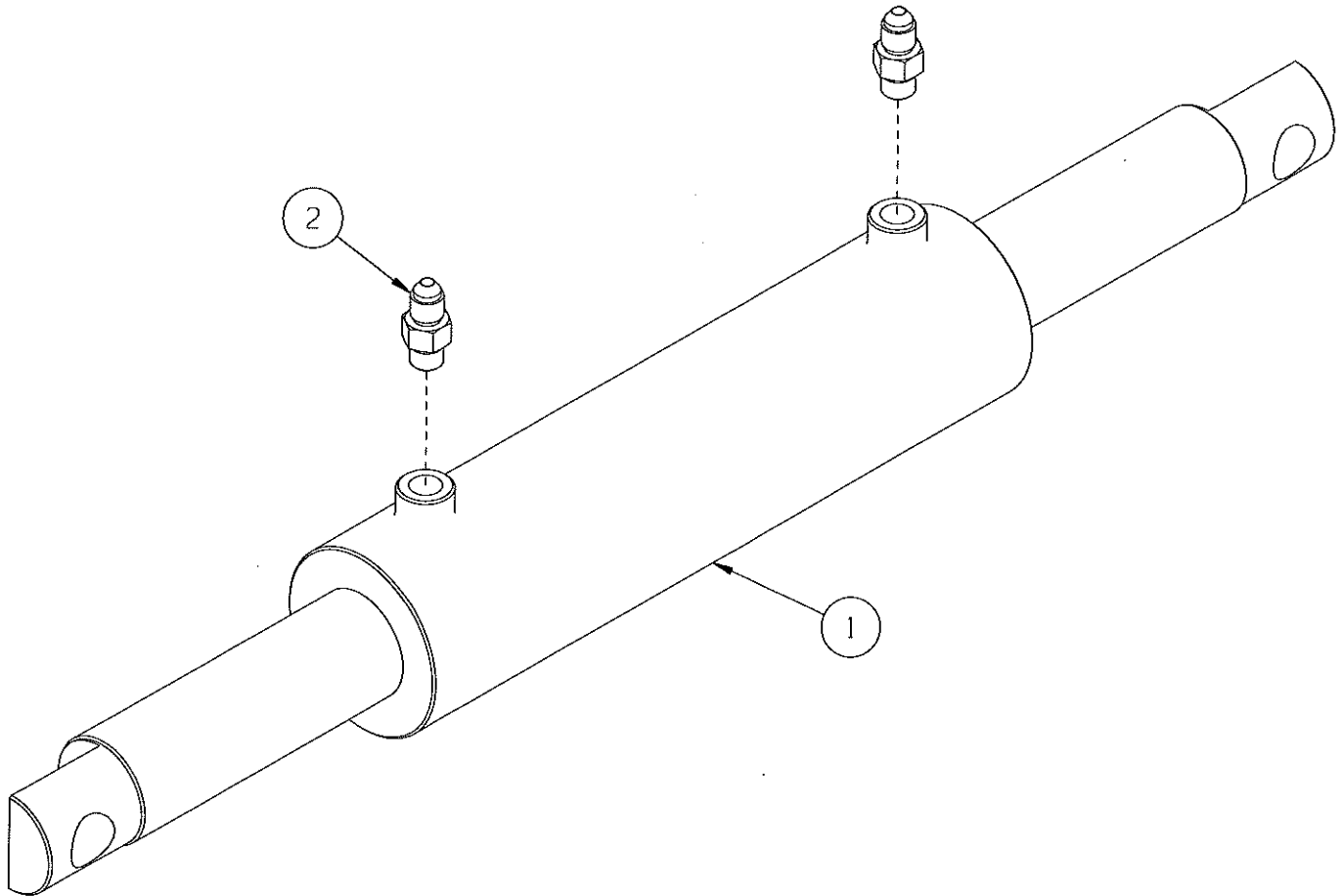
ITEM	PART	DESCRIPTION	QTY
1	101125-000	MOTOR - DRIVE	1
2	011935-003	FITTING, 6MB-6MJ45	2



# Steering Cylinder Assembly

## 113051-000

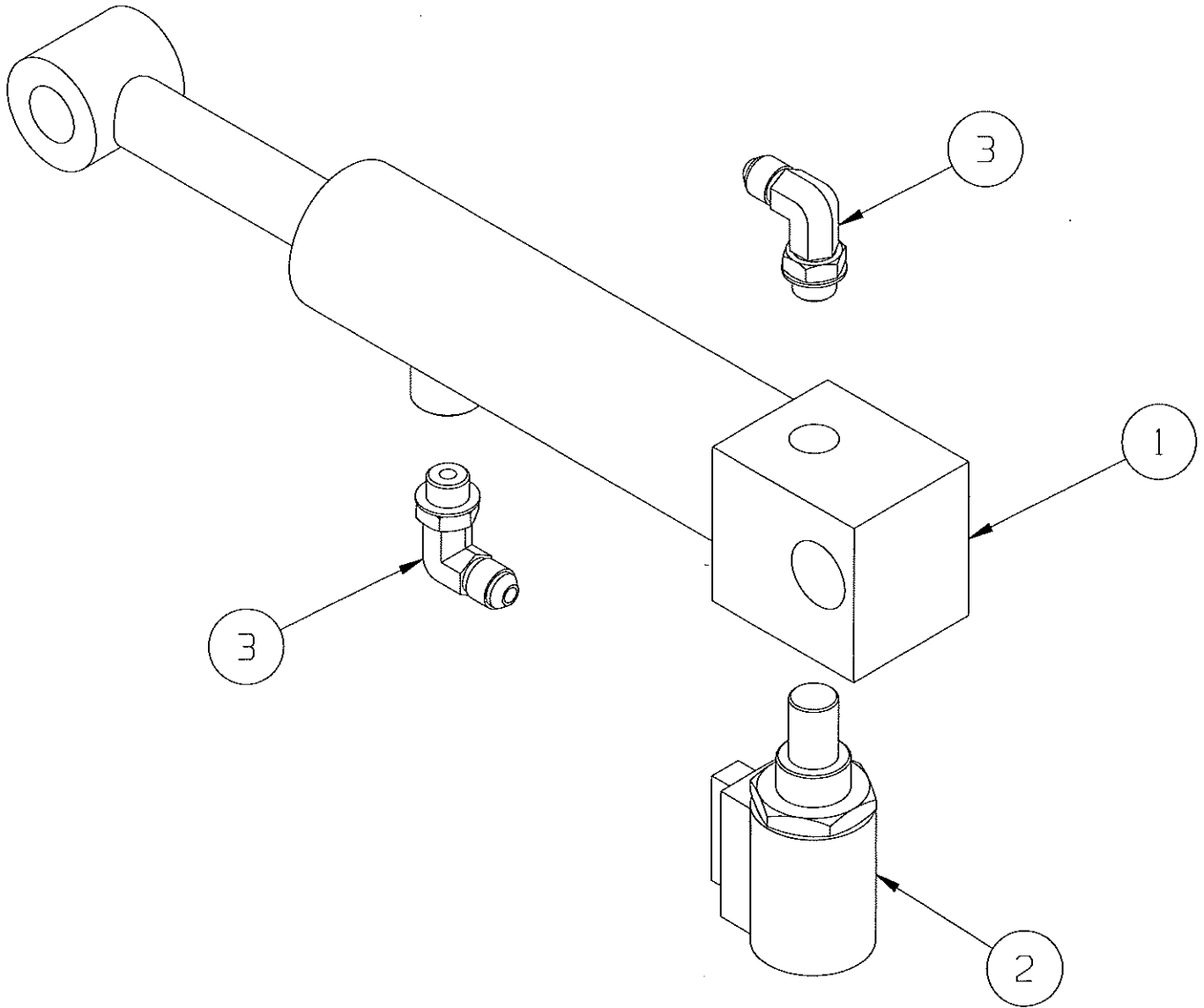
ITEM	PART	DESCRIPTION	QTY
1	065371-000	STEERING CYLINDER	1
*	065371-011	SEAL KIT	*
2	011941-001	FITTING, 4MB-4MJ	2





# Depression Cylinder Assembly 113053-000

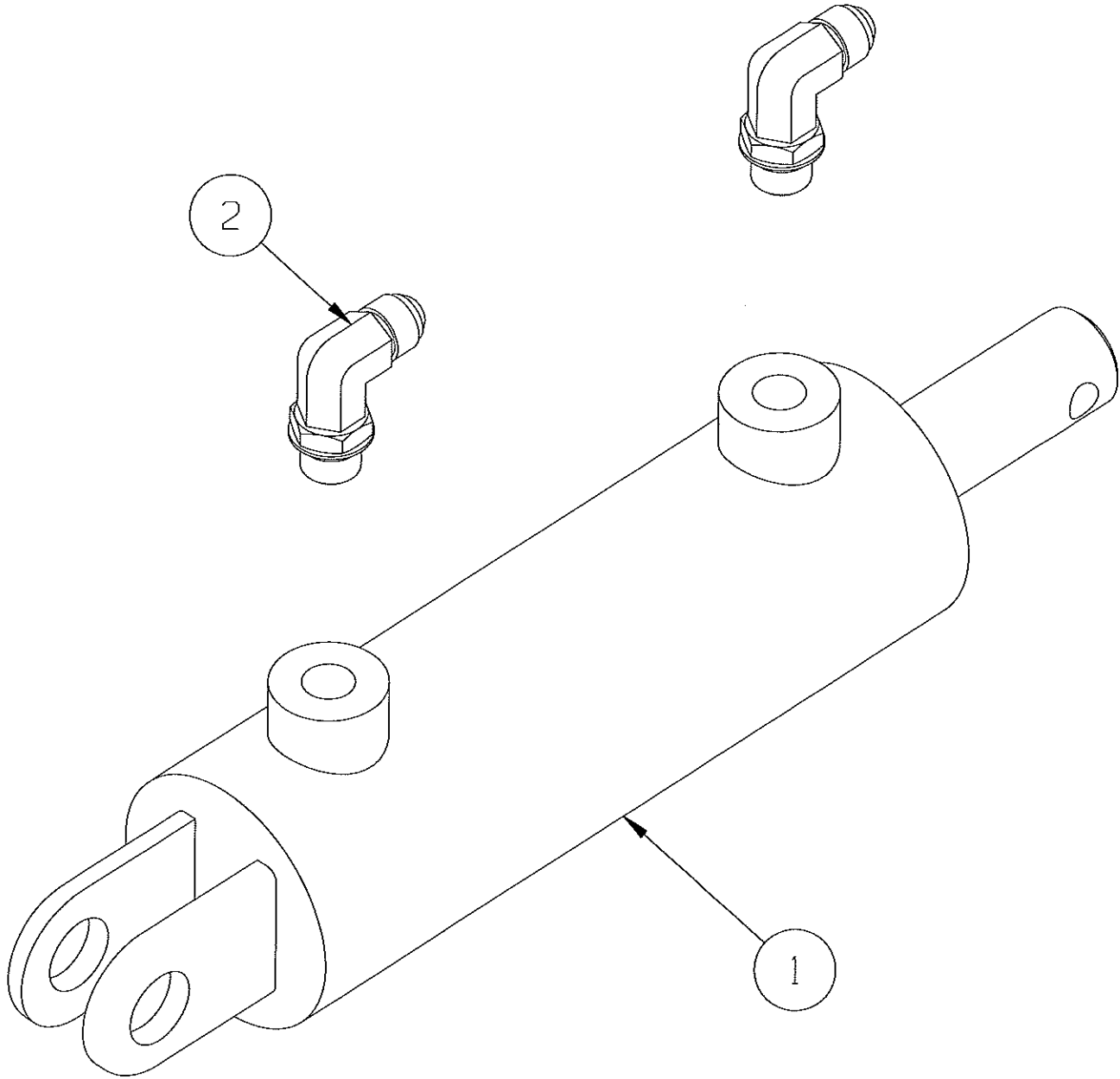
ITEM	PART	DESCRIPTION	QTY
1	065970-001	HYDRAULIC CYLINDER	1
*	065970-001	SEAL KIT	*
2	063973-001	VALVE, SOLENOID	1
3	011934-001	FITTING, 4MB-4MJ90	2



# Brake Cylinder Assembly

## 113054-000

ITEM	PART	DESCRIPTION	QTY
1	066604-001	CYLINDER	1
*	066604-011	SEAL KIT	*
2	011934-003	FITTING, 6MB-4MJ90	2

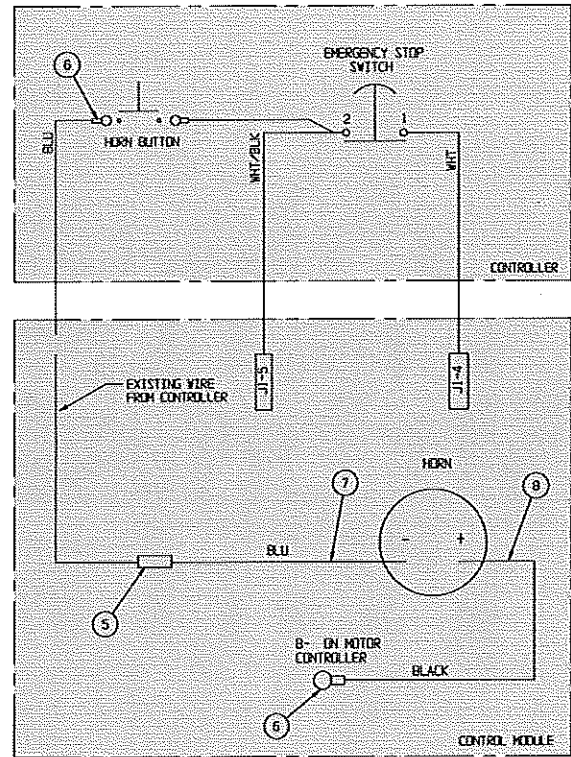
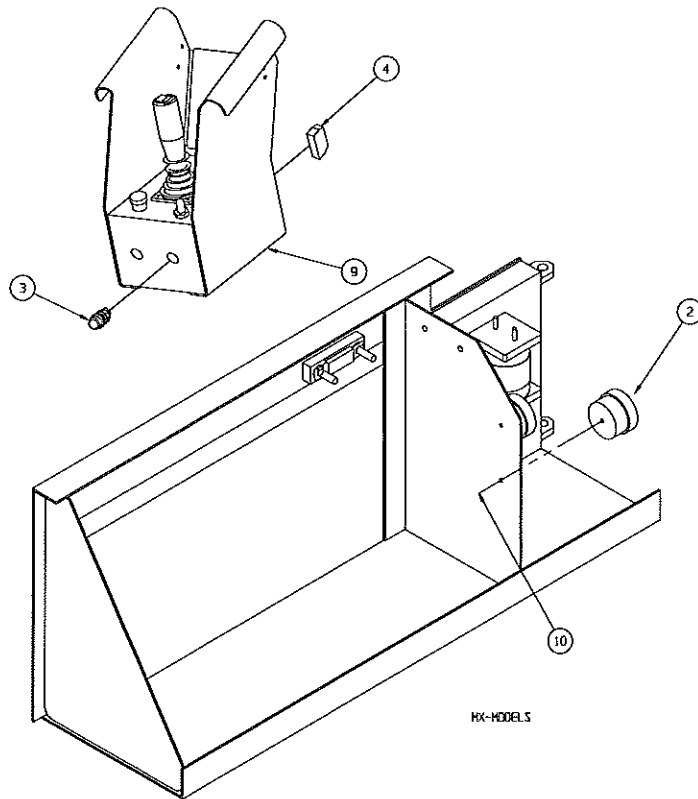


# Horn Assembly Option

## 066614-020

ITEM	PART	DESCRIPTION	QTY
1	-	CONTROL MODULE ASSEMBLY	REF
2	066807-003	HORN, 24 VDC	1
3	066805-018	SWITCH, PUSH BUTTON 6E	1
4	066805-010	CONTACT BLOCK NO	1
5	029620-002	CONNECTOR, BUTT 16-14 GA	1

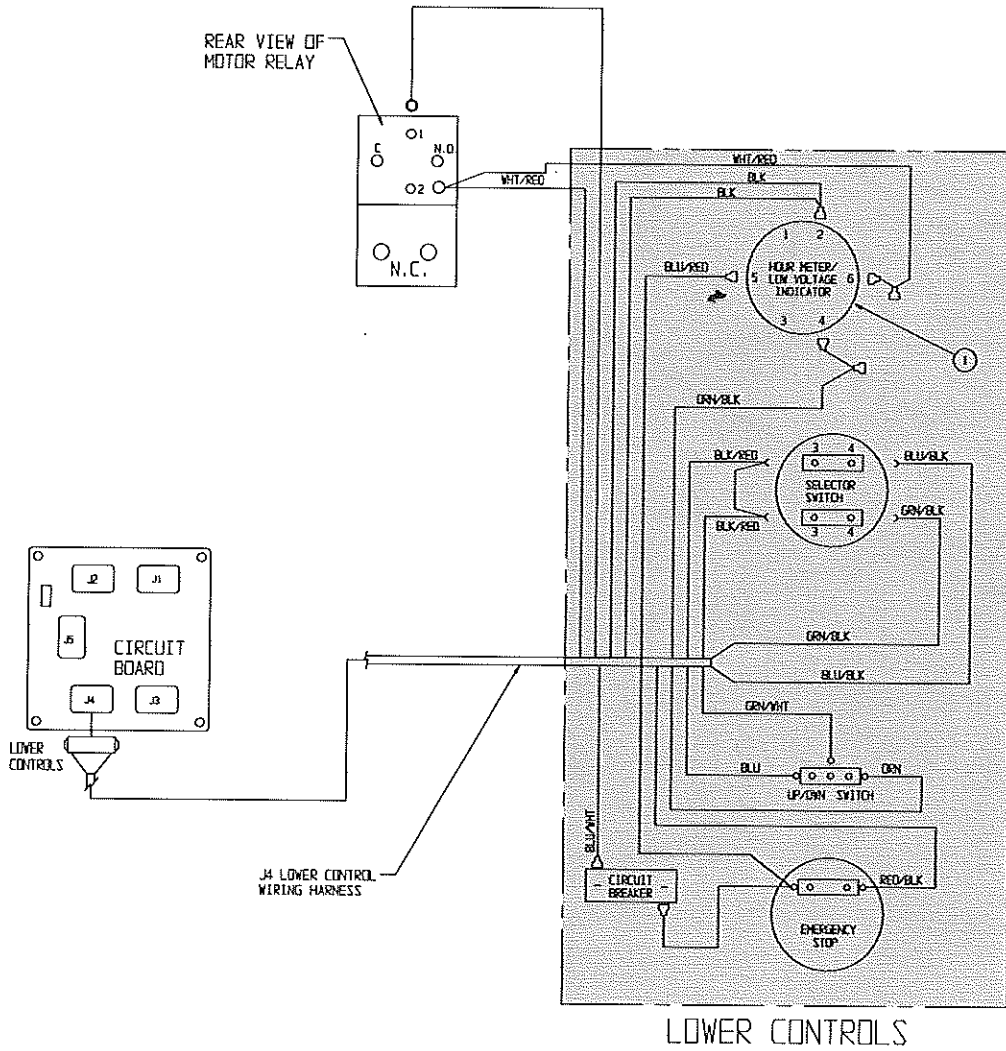
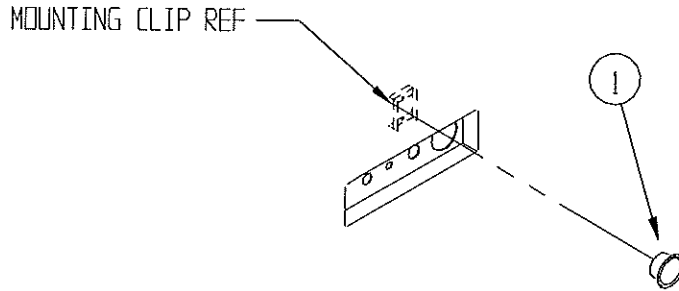
ITEM	PART	DESCRIPTION	QTY
6	029601-013	CONNECTOR, RING TERMINAL	4
7	029453-099	WIRE, 16 AWG BLUE	4 FT
8	029452-099	WIRE, 16 AWG BLACK	4 FT
9	-	CONTROLLER ASSY	REF
10	011252-006	SCREW HHC 1/4-20 X 3/4	1



# Hour Meter/Low Voltage Indicator Option 066613-020

ITEM	PART	DESCRIPTION	QTY.
1	029959-000	HR/LOW VOLTAGE IND.	1

## METER INSTALLATION



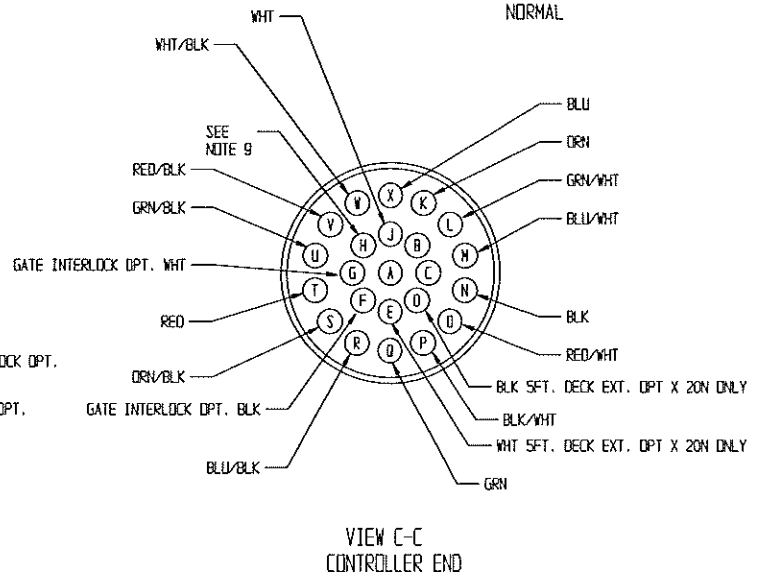
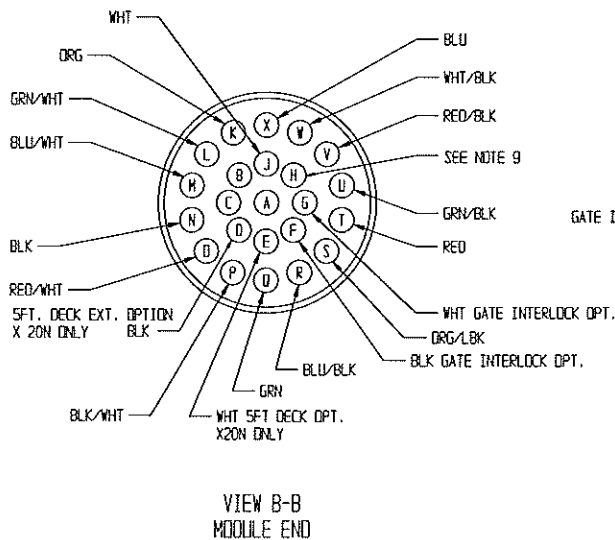
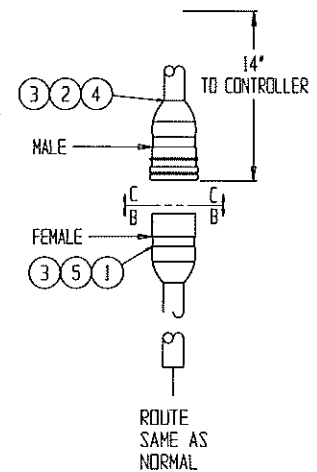
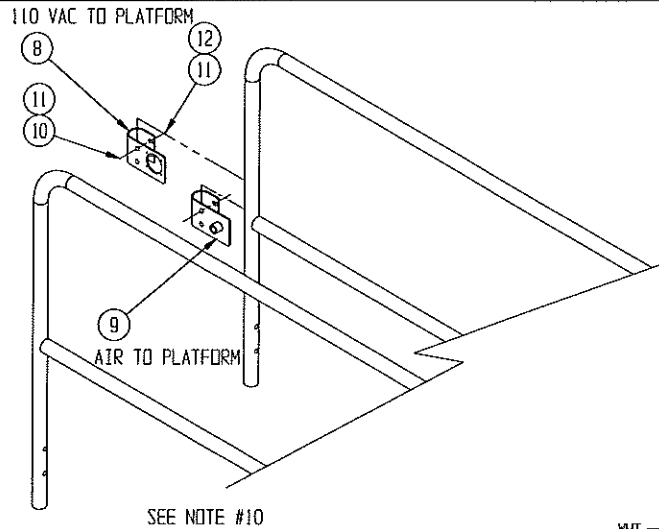
# Removable Controller Option 061898-001

ITEM	PART	DESCRIPTION	QTY
1	028800-003	PLUG CONNECTOR (FEMALE)	1
2	028800-004	PIN CONTACT (MALE)	15
3	028800-015	PLUG SEALING	16
4	028800-016	RECEPTACLE CONNECTOR W/ CLAMP (MALE)	1
5	028800-005	SOCKET CONTACT (FEMALE)	15

ITEM	PART	DESCRIPTION	QTY
8	030719-001	110 VAC BRACKET	1
9	030719-002	AIR BRACKET WELDMENT	1
10	011254-016	SCREW HHC GRD5 3/8-16UNC X 2	4
11	011240-006	WASHER 3/8 STD FLAT	4
12	011248-006	NUT HEX ESNA 3/8-16	2

### NOTES

- CUT OFF CONTROL CABLE 14 INCHES BELOW STRAIN RELIEF ON CONTROLLER.
- CUT OUTER CABEL COVER OF LINKAGE CABEL BACK APPROXIMATELY 1-1/2 INCH AND STRIP APPROXIMATELY 1/4 INCH OF EACH END.
- CRIMP SOCKETS (28800-005) ONTO WIRE ENDS AND INSERT INTO CONNECTOR (28800-016), REF. VIEW B-B.
- CUT OUTER CABEL COVER OF CONTROLLER END BACK APPROXIMATELY 1-1/2 INCH AND STRIP APPROXIMATELY 1/4 INCH OF EACH END.
- SLIDE BOOT AND CLAMP ONTO CABLE.
- CRIMP PINS (28800-004) ONTO WIRE ENDS AND INSERT INTO CONNECTOR (28800-003), REF. VIEW C-C.
- CLAMP BOOT TO CONNECTOR.
- CONNECT CONTROLLER AND TEST MACHINE FOR PROPER FUNCTION.
- USE TERMINAL " H " FOR HORN OPTION OR IF AUX WIRE IS REQUIRED.
- ITEM #8 THRU 12 REQD ONLY FOR 110 VAC AND/OR AIR TO PLATFORM.



## Label Installation - MX15

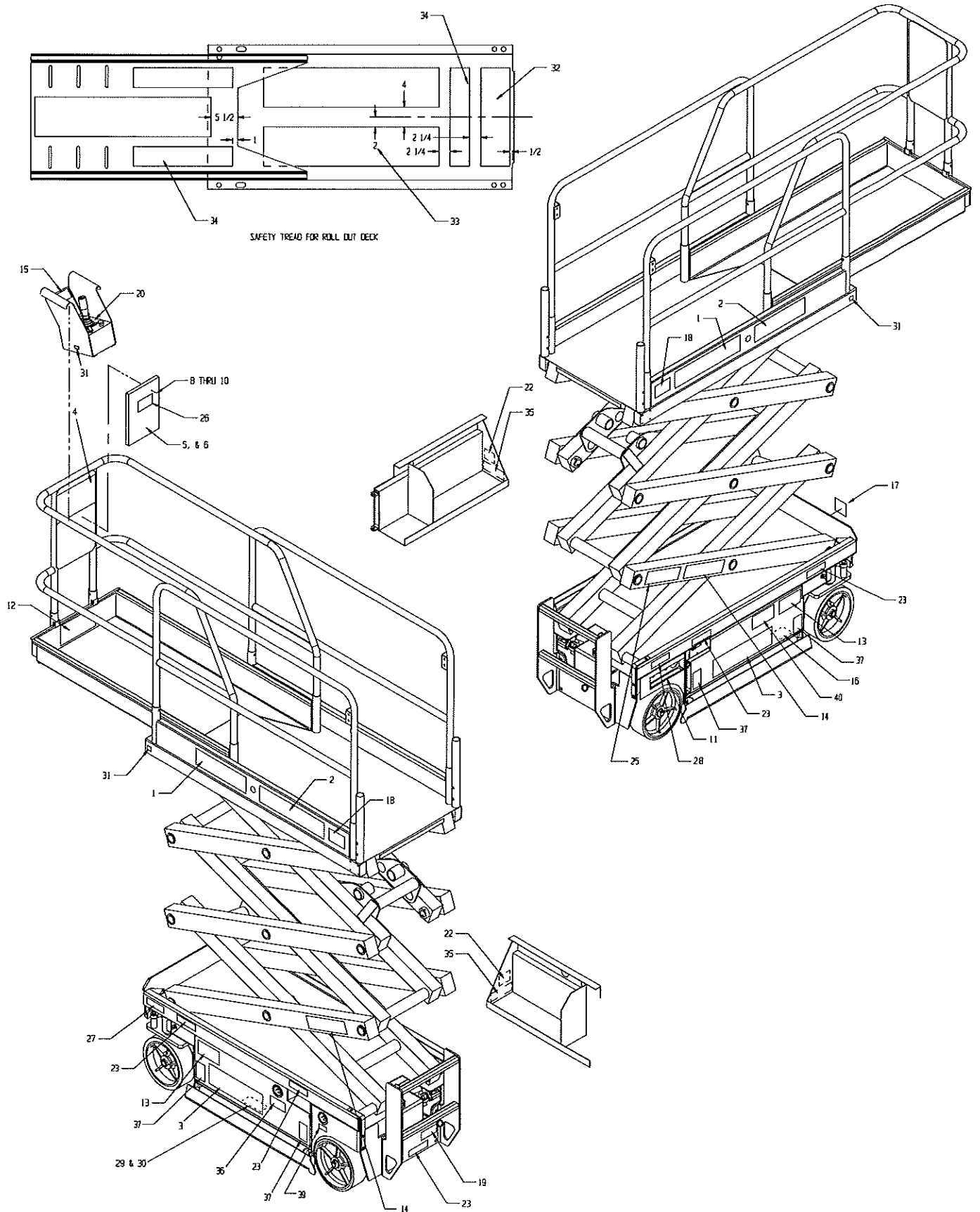
### 065612-033

ITEM	PART	DESCRIPTION	QTY
1	061683-004	LABEL UPRIGHT	2
2	061684-022	LABEL MX 15	2
3	061683-014	LABEL UPRIGHT	2
4	066550-000	LABEL DANGER	1
5	060577-004	ANSI MANUAL	1
6	010076-000	MANUAL CASE	1
8	011248-004	LOCKNUT 1/4-20UNC HEX	4
9	011252-006	SCREW 1/4-20UNC HHC X 3/4	4
10	011240-004	WASHER 1/4 STD FLAT	4
11	066559-000	LABEL CONTROLS	1
12	101251-000	LABEL MAX LOAD DECK EXT.	1
13	066552-000	LABEL WARNING	2
14	066553-003	LABEL WARNING KEEP CLEAR	2
15	066554-000	LABEL CAUTION	1
16	066555-000	LABEL CAUTION	1
17	066556-000	LABEL CAUTION	1
18	101250-001	LABEL MAX LOAD PLATFORM	2
19	066558-000	LABEL EMERG. LOWERING	1
20	101222-004	LABEL CONTROLLER	1
22	05221-000	LABEL BATTERY	2
23	014222-003-99	LABEL FORK-LIFT HERE	5
25	063255-001	LABEL SCISSOR BRACE	1
26	010076-001	LABEL INST.	1
27	061220-002	LABEL ANSI	1
28	101252-002	LABEL WHEEL MAX LOAD	1
29	061205-005	NAME PLATE	1
30	065368-000	TACK	4
31	064444-000	LABEL USA	4
32	060830-003	SAFETY WALK 6 X 21	1
33	060830-002	SAFETY WALK 8 X 36	3
34	060830-001	SAFETY WALK 4 X 20	3
35	062562-001	LABEL DANGER	2
36	066522-000	LABEL BATTERY CHARGER	1
37	066556-001	LABEL WARNING	4
39	068639-000	LABEL POWER TO PLATFORM	1
40	107051-000	LABEL, BATTERY DISCONNECT	1

## Label Installation - MX19

### 065712-033

ITEM	PART	DESCRIPTION	QTY
1	061683-004	LABEL UPRIGHT	2
2	061684-023	LABEL MX 19	2
3	061683-014	LABEL UPRIGHT	2
4	066550-000	LABEL DANGER	1
5	060577-004	ANSI MANUAL	1
6	010076-000	MANUAL CASE	1
8	011248-004	LOCKNUT 1/4-20UNC HEX	4
9	011252-006	SCREW 1/4-20UNC HHC X 3/4	4
10	011240-004	WASHER 1/4 STD FLAT	4
11	066559-000	LABEL CONTROLS	1
12	101251-000	LABEL MAX LOAD DECK EXT	1
13	066552-000	LABEL WARNING	2
14	066553-003	LABEL WARNING KEEP CLEAR	2
15	066554-000	LABEL CAUTION	1
16	066555-000	LABEL CAUTION	1
17	066556-000	LABEL CAUTION	1
18	101250-000	LABEL MAX LOAD PLATFORM	2
19	066558-000	LABEL EMERG. LOWERING	1
20	101222-004	LABEL CONTROLLER	1
22	05221-000	LABEL BATTERY	2
23	14222-003-99	LABEL FORK-LIFT HERE	1
25	063255-001	LABEL SCISSOR BRACE	1
26	010076-001	LABEL INST.	1
27	061220-002	LABEL ANSI	1
28	101252-009	LABEL WHEEL MAX LOAD WHEEL	1
29	061205-005	NAME PLATE	1
30	065368-000	TACK	4
31	064444-000	LABEL USA	4
32	060830-003	SAFETY WALK 6 X 21	1
33	060830-002	SAFETY WALK 8 X 36	3
34	060830-001	SAFETY WALK 4 X 20	3
35	062562-001	LABEL DANGER	2
36	066522-000	LABEL BATTERY CHARGER	1
37	066556-001	LABEL WARNING	4
39	068639-000	LABEL POWER TO PLATFORM	1
40	107051-000	LABEL, BATTERY DISCONNECT	1



---

**NOTES:**

---



# **UpRight**

Call Toll Free in U.S.A.

1-800-926-LIFT

---

**UpRight, Inc.**

801 South Pine Street  
Madera, California 93637

TEL: 559-662-3900

FAX: 559-673-6184

PARTS: 1-888-UR-PARTS

PARTS FAX: 1-800-669-9884

**UpRight**

Call Toll Free in U.S.A.

**1-800-926-LIFT**

P/N 060546-006

06-02

**UpRight**

Unit S1, Park West Industrial Park  
Friel Avenue  
Nangor Road  
Dublin 12, Ireland

TEL: +353 1 620 9300

FAX: +353 1 620 9301