

Parts Manual

MX15 / MX19 **Work Platform**

Serial Numbers 20600 - Current

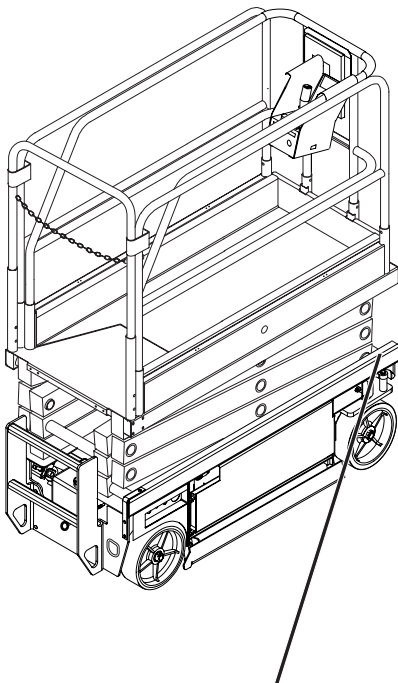
Publication Number: 113102-000

UpRight

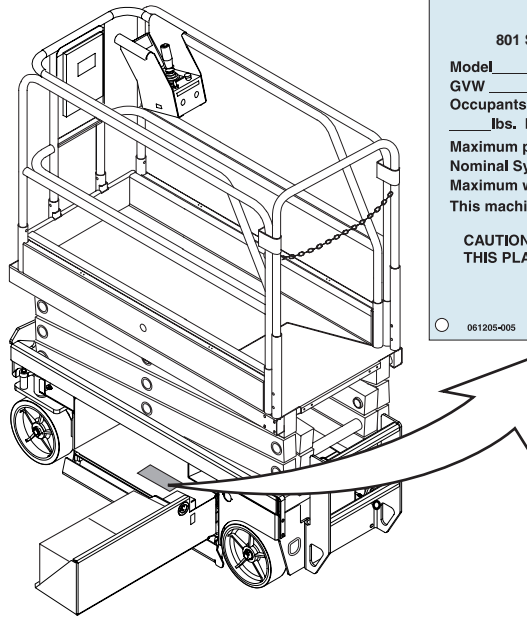
MX15 / MX19

Work Platform

When contacting UpRight for service or parts information, be sure to include the MODEL and SERIAL NUMBERS from the equipment nameplate. Should the nameplate be missing, the SERIAL NUMBER is also stamped on top of the chassis above the front axle pivot.



**Stamped Serial
Number**



| | |
|---|----------------------|
| UpRight Inc. | |
| 801 S. PARK ST. MADERA CALIFORNIA 93737 USA | |
| Model _____ | Serial number: _____ |
| GVW _____ lbs. | Mfg. date: _____ |
| Occupants and equipment must not exceed the rated workload _____ lbs. Rated number of occupants: _____ | |
| Maximum platform height: _____ ft. | |
| Nominal System Voltage: _____ vdc | |
| Maximum wheel and/or outrigger load: _____ lbs. | |
| This machine is manufactured to comply with ANSI A92.6-1999. | |
| CAUTION: CONSULT OPERATOR'S MANUAL BEFORE USE. THIS PLATFORM IS NOT ELECTRICALLY INSULATED. | |
| <small>061205-005</small> | |

UpRight, Inc.

801 South Pine Street
Madera, California 93637

TEL: 559-662-3900

FAX: 559-673-6184

PARTS: 1-888-UR-PARTS

PARTS FAX: 1-800-669-9884

UpRight

Call Toll Free in U.S.A.

1-800-926-LIFT

UpRight

Unit S1, Park West Industrial Park
Friel Avenue
Nangor Road
Dublin 12, Ireland

TEL: +353 1 620 9300

FAX: +353 1 620 9301

PARTS MANUAL

This document lists and illustrates the replaceable assemblies and parts of this product, as manufactured by UpRight, Inc. Each parts list contains the component parts for that assembly.

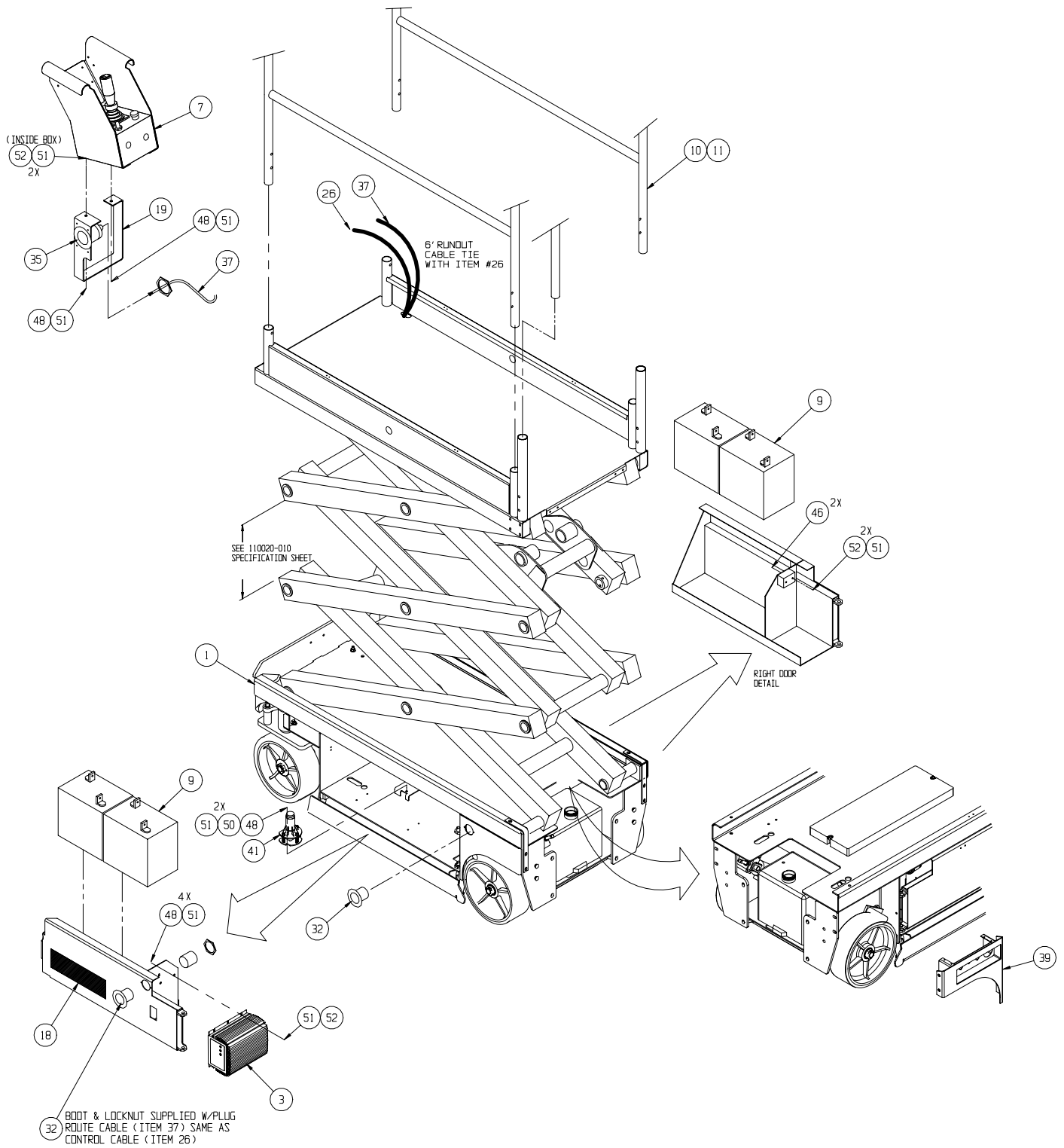
TABLE OF CONTENTS

| | | | |
|---|----|---|----|
| Final Assembly - MX15 113000-000 | 2 | Chassis Assembly 113002-000 | 26 |
| Final Assembly - MX19 113010-000 | 4 | Hose Kit Installation 113006-000 | 30 |
| Final Assembly Wiring - MX15 065606-000 | 6 | Hydraulic Tank Assembly 101152-001 | 31 |
| Final Assembly Wiring - MX19 065606-001 | 8 | Valve Block 101120-122 | 32 |
| Controller Assembly 066013-018 | 10 | Valve Block Assembly 113052-000 | 34 |
| PQ Controller 065512-000 | 12 | Power Unit Assembly 113055-000 | 35 |
| Lower Controls (Wheel Cover Assembly) 065980-004 | 13 | Drive Motor Assembly 113065-000 | 36 |
| Basic Assembly - MX15 113001-000 | 14 | Steering Cylinder Assembly 113051-000 | 37 |
| Basic Assembly - MX19 113011-000 | 16 | Depression Cylinder Assembly 113053-000 | 38 |
| Scissor Arm Assembly - MX15 065605-020 | 18 | Horn Assembly Option 066614-020 | 39 |
| Scissor Arm Assembly - MX19 065705-020 | 20 | Hour Meter/Low Voltage Indicator Option 066613-020 | 40 |
| Platform Guardrail Installation 065603-004 | 22 | Removable Controller Option 061898-001 | 41 |
| Deck Extension Assembly 065614-000 | 23 | Label Installation - MX15 065612-033 | 42 |
| Proximity Switch Assembly 067193-001 | 24 | Label Installation - MX19 065712-033 | 42 |

Final Assembly - MX15

113000-000

| ITEM | PART | DESCRIPTION | QTY | ITEM | PART | DESCRIPTION | QTY |
|------|------------|--------------------------|-----|------|------------|---------------------------|--------|
| 1 | 113001-000 | BASIC ASSY | 1 | 23 | 113100-000 | USER MANUAL | 1 |
| 2 | 065606-000 | FINAL ASSY WIRING - MX15 | 1 | 26 | 065609-020 | CONTROL CABLE ASSY | REF |
| 3 | 069199-000 | CHARGER | 1 | 32 | 067336-000 | PLUG ASSY M 110Vac | 2 |
| 7 | 066013-018 | CONTROLLER ASSEMBLY | 1 | 35 | 067336-001 | PLUG ASSY FM 110Vac | 1 |
| 9 | 015796-000 | BATTERY 6 V | 4 | 37 | 029495-099 | WIRE AWG 14 GA 3 CONN. | 37 FT. |
| 10 | 065614-000 | EXTENSION DECK | 1 | 39 | 065980-004 | WHEEL COVER ASSY | 1 |
| 11 | 065603-004 | PLATFORM/GUARDRAIL ASSY | 1 | 41 | 029945-030 | LEVEL SENSOR ASSY | 1 |
| 14 | 113006-000 | HOSE KIT / INST. | 1 | 46 | 011252-012 | SCREW HHCS 1/4-20 X 1 1/2 | 2 |
| 15 | 113007-000 | HYDRAULIC SCHEMATIC | REF | 48 | 011252-006 | SCREW HHC 1/4-20UNC X 3/4 | 8 |
| 16 | 065616-026 | ELECTRICAL SCHEMATIC | REF | 50 | 011238-004 | WASHER 1/4 LOCK | 2 |
| 17 | 110020-010 | MX SPECIFICATION SHEET | REF | 51 | 011240-004 | WASHER 1/4 STD FLAT | 12 |
| 18 | 065612-033 | LABEL KIT / INSTALLATION | 1 | 52 | 011248-004 | NUT HEX ESNA 1/4-20UNC | 8 |
| 19 | 065746-002 | CONTROLLER GUIDE-WIDE | 1 | 53 | 115032-000 | WELDMENT KIT - CHASSIS | 1 |
| 20 | 060540-001 | DOCUMENTATION KIT | 1 | 54 | 115033-000 | WELDMENT KIT - LINKAGE | 1 |
| 21 | 113101-000 | SERVICE MANUAL | 1 | 55 | 115034-000 | WELDMENT KIT - PLATFORM | 1 |
| 22 | 113102-000 | PARTS MANUAL | 1 | | | | |

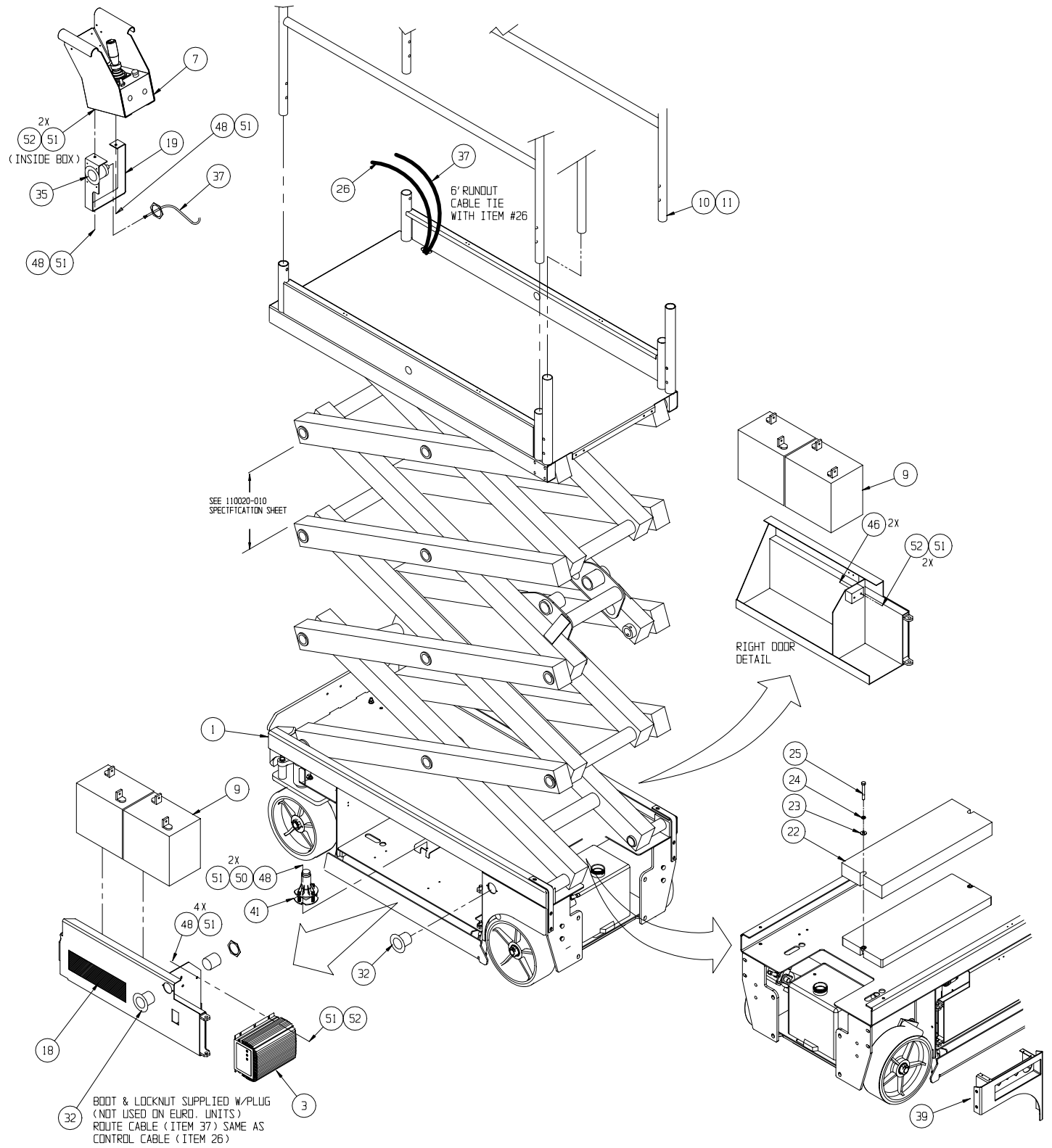


Final Assembly - MX19

113010-000

| ITEM | PART | DESCRIPTION | QTY | ITEM | PART | DESCRIPTION | QTY |
|------|------------|-----------------------------|-----|------|------------|---------------------------|--------|
| 1 | 113011-000 | BASIC ASSY | 1 | 25 | 011254-024 | SCREW - 3/8-16 UNC X 3 | 2 |
| 2 | 065606-001 | FINAL ASSY WIRING | 1 | 26 | 065609-021 | CONTROL CABLE ASSY | REF |
| 3 | 069199-000 | CHARGER | 1 | 27 | 113102-000 | PARTS MANUAL | 1 |
| 7 | 066013-018 | CONTROLLER ASSEMBLY | 1 | 28 | 113100-000 | USER MANUAL | 1 |
| 9 | 015796-000 | BATTERY 6 V | 4 | 32 | 067336-000 | PLUG ASSY M 110Vac | 2 |
| 10 | 065614-000 | EXTENSION DECK | 1 | 35 | 067336-001 | PLUG ASSY FM 110Vac | 1 |
| 11 | 065603-004 | PLATFORM/GUARDRAIL ASSY | 1 | 37 | 029495-099 | WIRE AWG 14 GA 3 CONN. | 37 FT. |
| 14 | 113006-000 | HOSE KIT / INST. | 1 | 39 | 065980-004 | WHEEL COVER ASSY | 1 |
| 15 | 113007-000 | HYDRAULIC SCHEMATIC | REF | 41 | 029945-030 | LEVEL SENSOR ASSY | 1 |
| 16 | 065616-026 | ELECTRICAL SCHEMATIC | REF | 46 | 011252-012 | SCREW HHCS 1/4-20 X 1 1/2 | 2 |
| 17 | 110020-010 | MX SPECIFICATION SHEET | REF | 48 | 011252-006 | SCREW, 1/4-20UNC X 3/4 | 8 |
| 18 | 065712-033 | LABEL KIT / INSTALLATION | 1 | 50 | 011238-004 | WASHER 1/4 LOCK | 2 |
| 19 | 065746-002 | CONTROLLER GUIDE-WIDE | 1 | 51 | 011240-004 | WASHER 1/4 STD FLAT | 12 |
| 20 | 060540-001 | DOCUMENTATION KIT | 1 | 52 | 011248-004 | NUT HEX ESNA 1/4-20UNC | 8 |
| 21 | 113101-000 | SERVICE MANUAL | 1 | 53 | 115032-000 | WELDMENT KIT - CHASSIS | 1 |
| ‡22 | 065963-002 | COUNTERWEIGHT - UPPER | 1 | 54 | 115033-001 | WELDMENT KIT - LINKAGE | 1 |
| 23 | 011240-006 | WASHER - 3/8 STD. FLAT | 2 | 55 | 115034-000 | WELDMENT KIT - PLATFORM | 1 |
| 24 | 011238-006 | LOCKWASHER - 3/8 SPLIT RING | 2 | | | | |

‡ Reference Only - components included in paint kit.

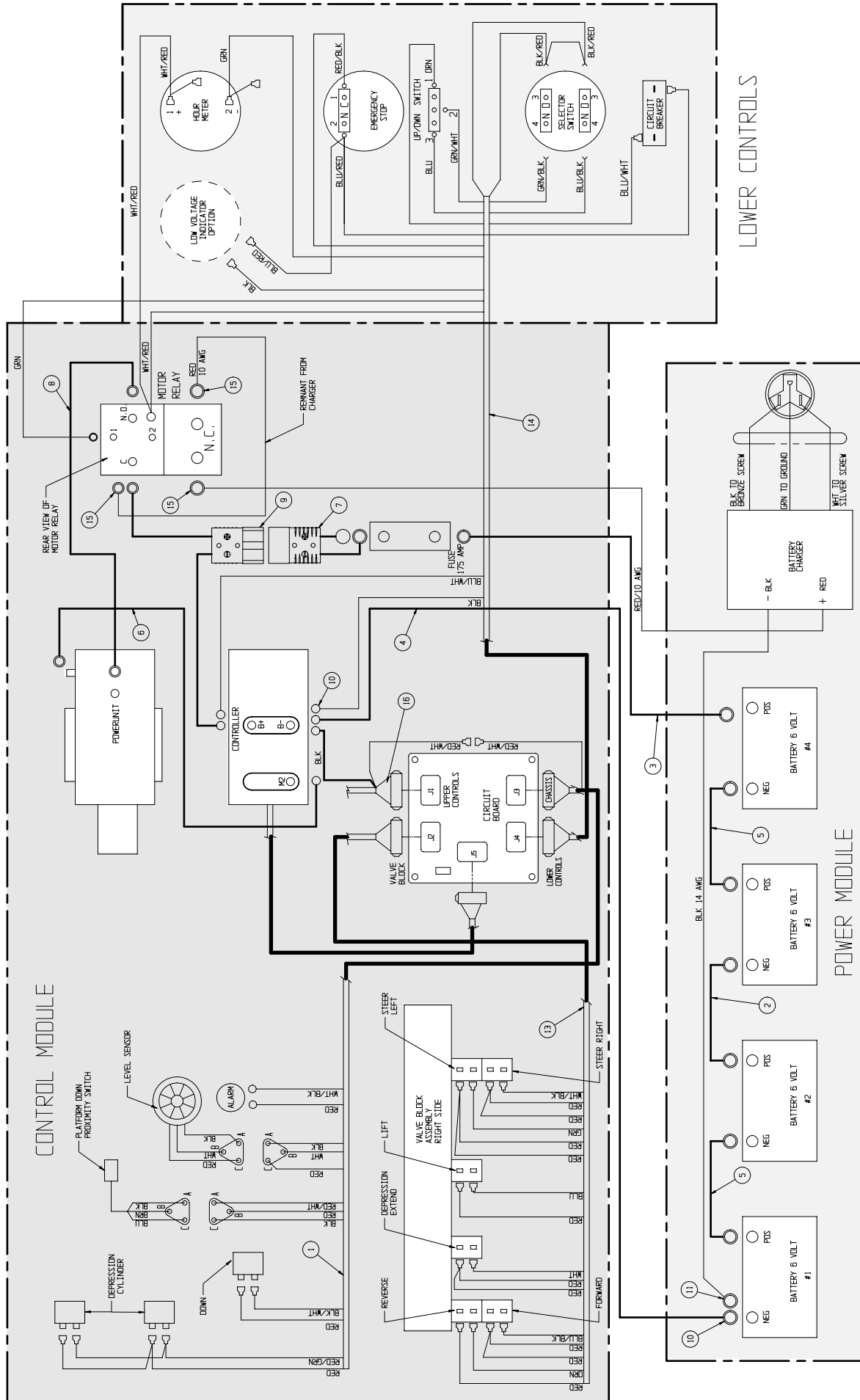


Final Assembly Wiring - MX15

065606-000

| ITEM | PART | DESCRIPTION | QTY |
|------|------------|------------------------|-----|
| 1 | 065943-004 | WIRE HARNESS ASSY | 1 |
| 2 | 062125-118 | CABLE ASSY X 118 | 1 |
| 3 | 064195-022 | CABLE ASSY X 22 | 1 |
| 4 | 064195-062 | CABLE ASSY X 62 | 1 |
| 5 | 064195-015 | CABLE ASSY X 15 | 2 |
| 6 | 062125-016 | CABLE ASSY X 16 | 1 |
| 7 | 101182-001 | CABLE ASSY W/CONNECTOR | 1 |
| 8 | 062125-019 | CABLE ASSY X 19 | 1 |

| ITEM | PART | DESCRIPTION | QTY |
|------|------------|----------------------------|-----|
| 9 | 101182-002 | CABLE ASSY W/CONNECTOR | 1 |
| 10 | 010154-001 | COVER - BATTERY TERMINAL | 10 |
| 11 | 029601-039 | CONN. RING 5/16 10-12 | 3 |
| 13 | 065942-003 | CABLE ASSY - VALVE BLOCK | 1 |
| 14 | 067340-001 | WIRE ASSY - LOWER CONTROLS | 1 |
| 15 | 029601-021 | CONN. RING 3/8 10-12 | 3 |
| 16 | 065609-020 | CONTROL CABLE ASSY - MX15 | 1 |

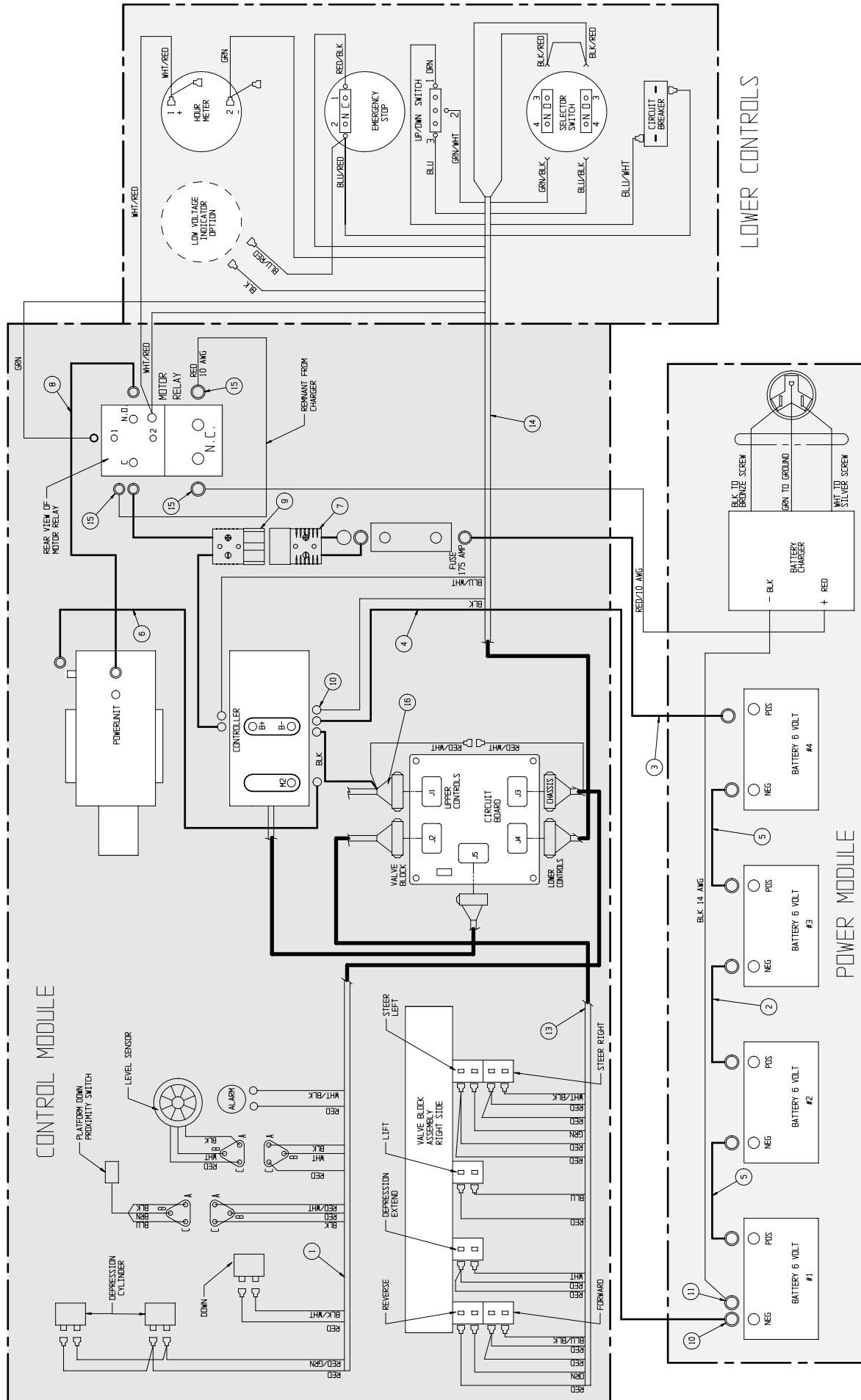


Final Assembly Wiring - MX19

065606-001

| ITEM | PART | DESCRIPTION | QTY |
|------|------------|------------------------|-----|
| 1 | 065943-004 | WIRE HARNESS ASSY | 1 |
| 2 | 062125-118 | CABLE ASSY X 118 | 1 |
| 3 | 064195-022 | CABLE ASSY X 22 | 1 |
| 4 | 064195-062 | CABLE ASSY X 62 | 1 |
| 5 | 064195-015 | CABLE ASSY X 15 | 2 |
| 6 | 062125-016 | CABLE ASSY X 16 | 1 |
| 7 | 101182-001 | CABLE ASSY W/CONNECTOR | 1 |
| 8 | 062125-019 | CABLE ASSY X 19 | 1 |

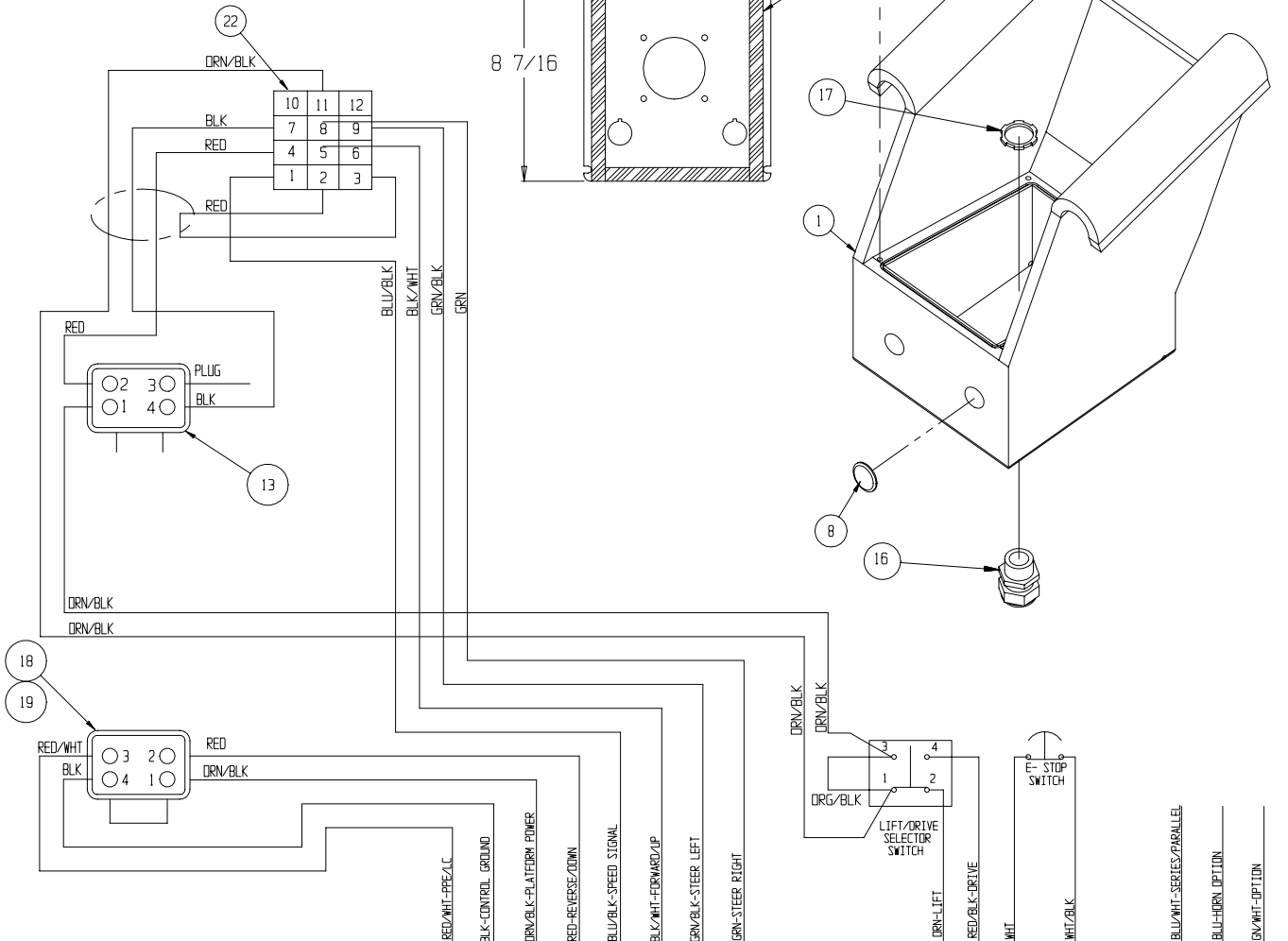
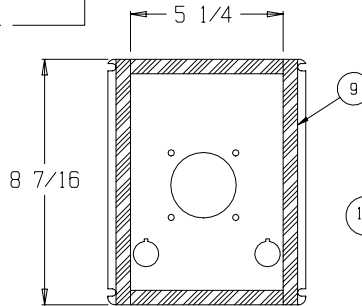
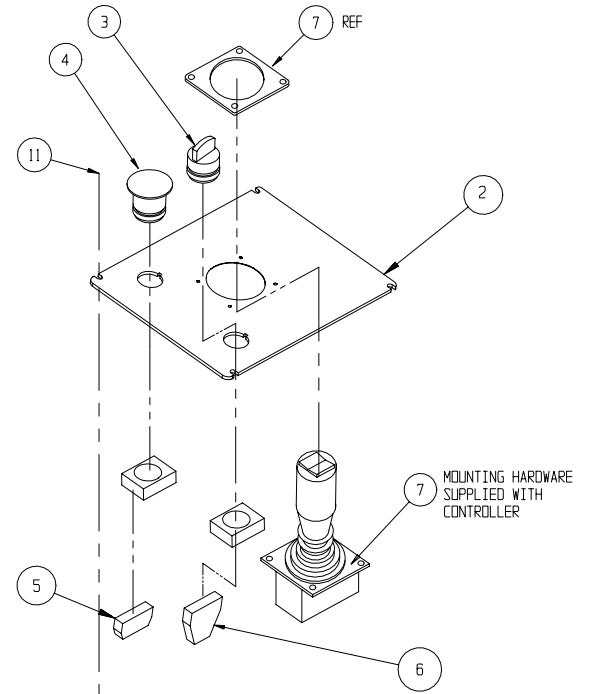
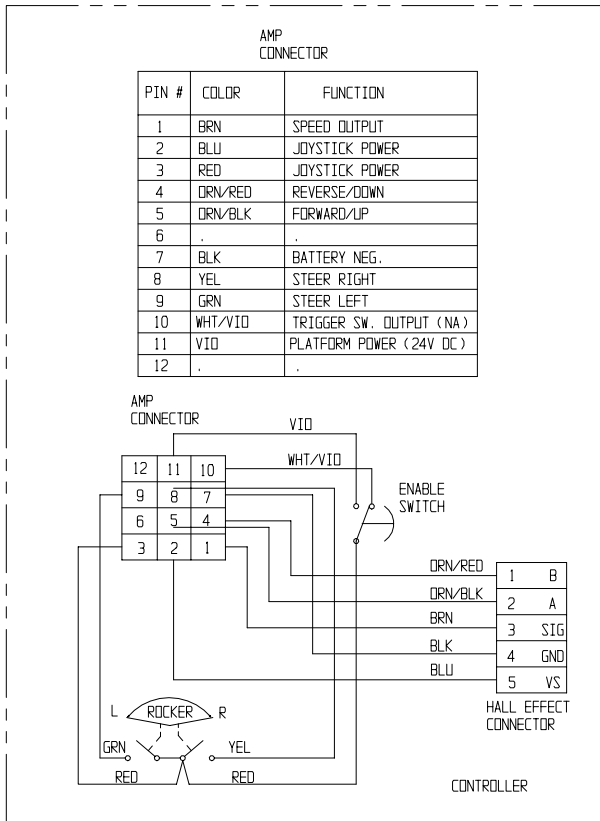
| ITEM | PART | DESCRIPTION | QTY |
|------|------------|----------------------------|-----|
| 9 | 101182-002 | CABLE ASSY W/CONNECTOR | 1 |
| 10 | 010154-001 | COVER - BATTERY TERMINAL | 10 |
| 11 | 029601-039 | CONN. RING 5/16 10-12 | 3 |
| 13 | 065942-003 | CABLE ASSY - VALVE BLOCK | 1 |
| 14 | 067340-001 | WIRE ASSY - LOWER CONTROLS | 1 |
| 15 | 029601-021 | CONN. RING 3/8 10-12 | 3 |
| 16 | 065609-021 | CONTROL CABLE ASSY - MX19 | 1 |



Controller Assembly

066013-018

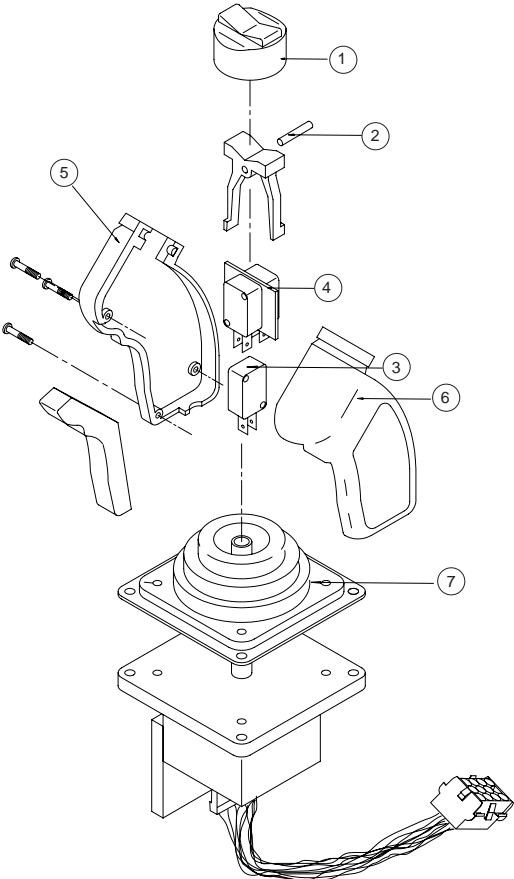
| ITEM | PART | DESCRIPTION | QTY |
|------|------------|--|---------|
| 1 | 101188-010 | BOX CONTROLLER | 1 |
| 2 | 101223-003 | COVER CONTROLLER | 1 |
| 3 | 066805-002 | SWITCH SELECTOR-2 POSITION | 1 |
| 4 | 066805-006 | SWITCH PUSH BUTTON | 1 |
| 5 | 066805-011 | CONTACT NC | 1 |
| 6 | 066805-012 | CONTACT NO - NC | 1 |
| 7 | 065512-000 | CONTROLLER PQ | 1 |
| 8 | 063926-011 | PLUG CAPLUG #CCF 1-14-20 | 2 |
| 9 | 068889-099 | WEATHERSTRIP#CCF 1-14-20 | 2.3 FT. |
| 11 | 011761-004 | SCREW MACH SLOTTED TRUSS HD #10-24 X 1/2 | 4 |
| 13 | 101240-000 | CABLE ASSY CONTROLLER | 1 |
| 16 | 029925-010 | CONN CABLE | 1 |
| 17 | 029939-003 | LOCKNUT 3/4 | 1 |
| 18 | 067990-020 | 4 PIN RECEPTACLE | 1 |
| 19 | 067990-023 | 4 PIN WEDGE | 1 |
| 22 | 063956-003 | CONN 12 PIN | 1 |



PQ Controller

065512-000

| ITEM | PART NO. | DESCRIPTION | QTY |
|------|------------|--------------------|-----|
| 1 | 063953-001 | CAP, RUBBER | 1 |
| 2 | 065512-013 | ROCKER, PIN | 1 |
| 3 | 063953-007 | SWITCH, INTERLOCK | 1 |
| 4 | 065512-015 | SWITCH, STEERING | 1 |
| 5 | 065512-016 | HANDLE HALF, RIGHT | 1 |
| 6 | 065512-017 | HANDLE HALF, LEFT | 1 |
| 7 | 065512-018 | BOOT, HANDLE | 1 |

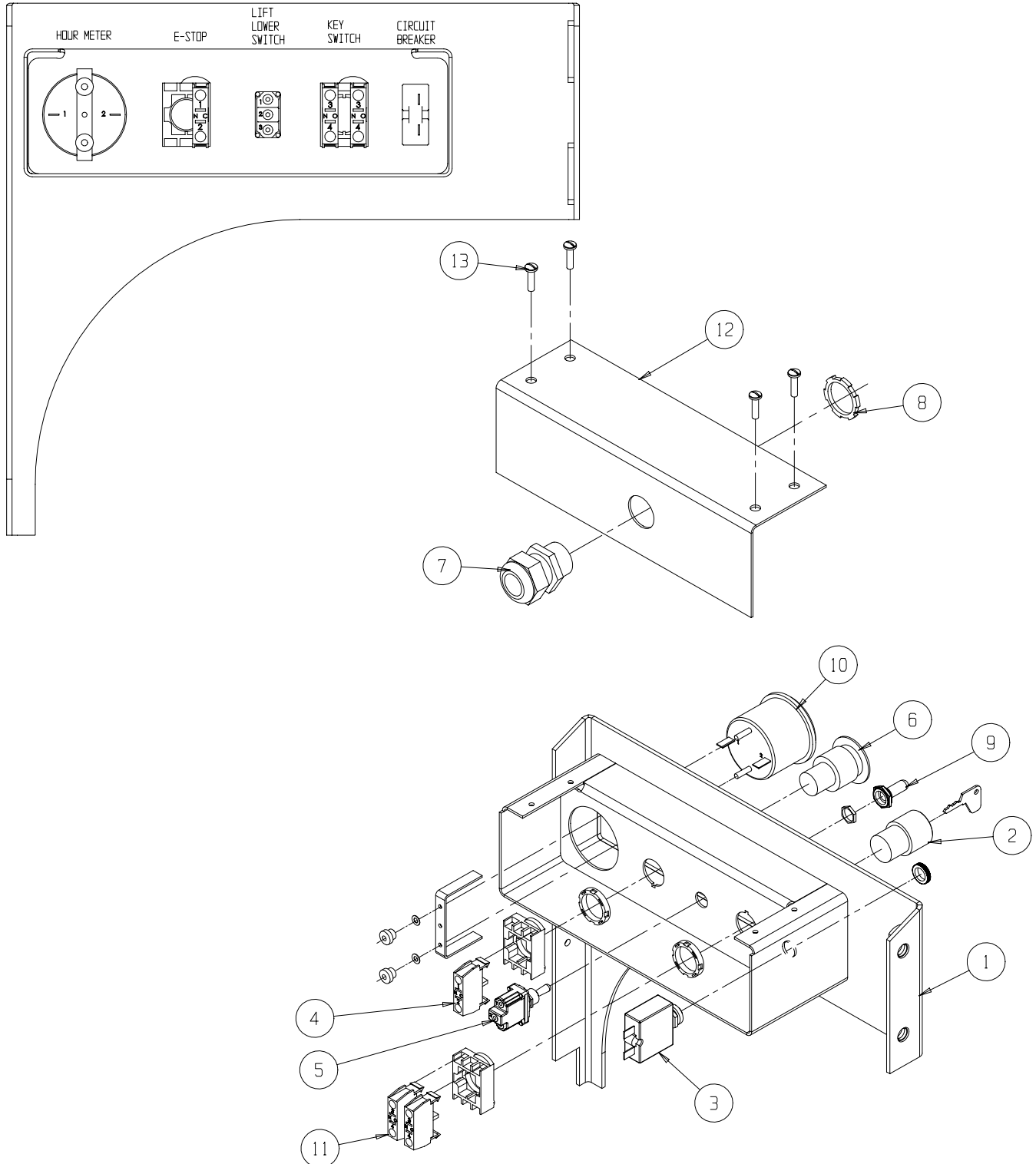


Lower Controls (Wheel Cover Assembly)

065980-004

| ITEM | PART NO. | DESCRIPTION | QTY |
|------|------------|----------------------|-----|
| 1 | 065979-001 | WHEEL COVER WELDMENT | 1 |
| 2 | 066805-004 | KEYSWITCH | 1 |
| 3 | 068582-005 | CIRCUIT BREAKER | 1 |
| 4 | 066805-011 | SWITCH CONTACT BLOCK | 1 |
| 5 | 012798-000 | SWITCH TOGGLE | 1 |
| 6 | 066805-006 | SWITCH HEAD MUSHROOM | 1 |
| 7 | 029925-010 | CONNECTOR CABLE | 1 |

| ITEM | PART NO. | DESCRIPTION | QTY |
|------|------------|-------------------------------|-----|
| 8 | 029939-003 | LOCKNUT 3/4 NPT | 1 |
| 9 | 029872-000 | BOOT SWITCH COVER | 1 |
| 10 | 015752-000 | HOURMETER | 1 |
| 11 | 066805-010 | SWITCH CONTACT N.O. | 2 |
| 12 | 065978-000 | COVER | 1 |
| 13 | 011811-006 | SCREW SLFTP F HWH 10-32 X 3/4 | 4 |



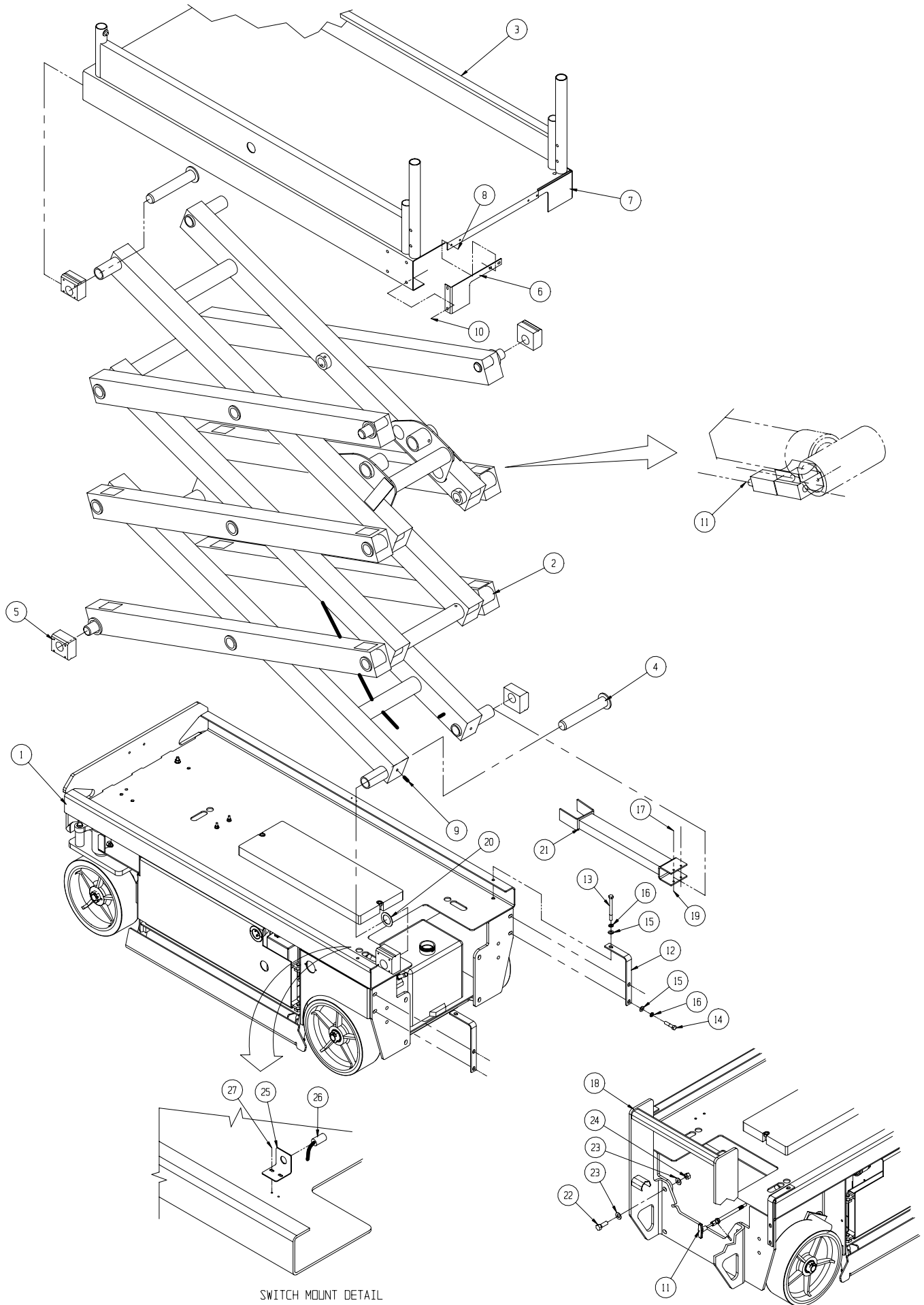
Basic Assembly - MX15

113001-000

| ITEM | PART | DESCRIPTION | QTY | ITEM | PART | DESCRIPTION | QTY |
|------|------------|------------------------------|-----|------|------------|-------------------------------------|-----|
| 1 | 113002-000 | CHASSIS ASS'Y | 1 | 15 | 011240-006 | WASHER 3/8 STD FLAT | 4 |
| 2 | 065605-020 | SCISSOR ARM ASS'Y- X15 | 1 | 16 | 011238-006 | LOCK WASHER - 3/8" SPLIT RING | 6 |
| †3 | 066250-001 | PLATFORM WELDMENT | 1 | 17 | 011829-022 | CARRIAGE BOLT 1/4-20 X 2-3/4 PLATED | 2 |
| 4 | 065698-000 | LOWER PIVOT PIN WELDMENT | 4 | †18 | 066307-006 | LADDER WELDMENT - MX15 | 1 |
| 5 | 065726-000 | SLIDE PAD | 8 | 19 | 011248-004 | LOCKNUT 1/4-20 UNC ESNA | 2 |
| ‡6 | 065728-000 | DECK BRACKET L.H. | 1 | 20 | 011786-007 | BUSHING - MACHINERY | 2 |
| ‡7 | 065727-000 | DECK BRACKET R.H. | 1 | †21 | 065764-000 | SCISSOR CHOCK WELDMENT X15/19 | 1 |
| 8 | 014027-006 | SCREW HHD SLFTP 1/4-28 x 3/4 | 4 | 22 | 011256-012 | SCREW HHC 1/2-13UNC X 1 1/2 | 4 |
| 9 | 011739-020 | ROLLPIN 3/8 DIA. x 2 1/2 | 4 | 23 | 011240-008 | WASHER 1/2 STD FLAT | 8 |
| 10 | 014066-008 | SCREW SLFTP 1/4-AB x 1 | 16 | 24 | 011248-008 | LOCKNUT 1/2-13 UNC ESNA | 4 |
| 11 | 065754-006 | EMERGENCY LOWERING CABLE | 1 | ‡25 | 067318-000 | SWITCH BRACKET | 1 |
| ‡12 | 065937-001 | BEARING RETENTION ANGLE | 2 | 26 | 067193-001 | SWITCH ASSY | 1 |
| 13 | 011254-034 | SCREW HHC 3/8-16UNC X 4 1/4 | 2 | 27 | 011252-006 | SCREW - 1/4-20 UNC X 3/4 | 2 |
| 14 | 011254-014 | SCREW HHC 3/8-16UNC X 1 3/4 | 4 | | | | |

† Reference Only - components included in weldment kit.

‡ Reference Only - components included in paint kit.



SWITCH MOUNT DETAIL

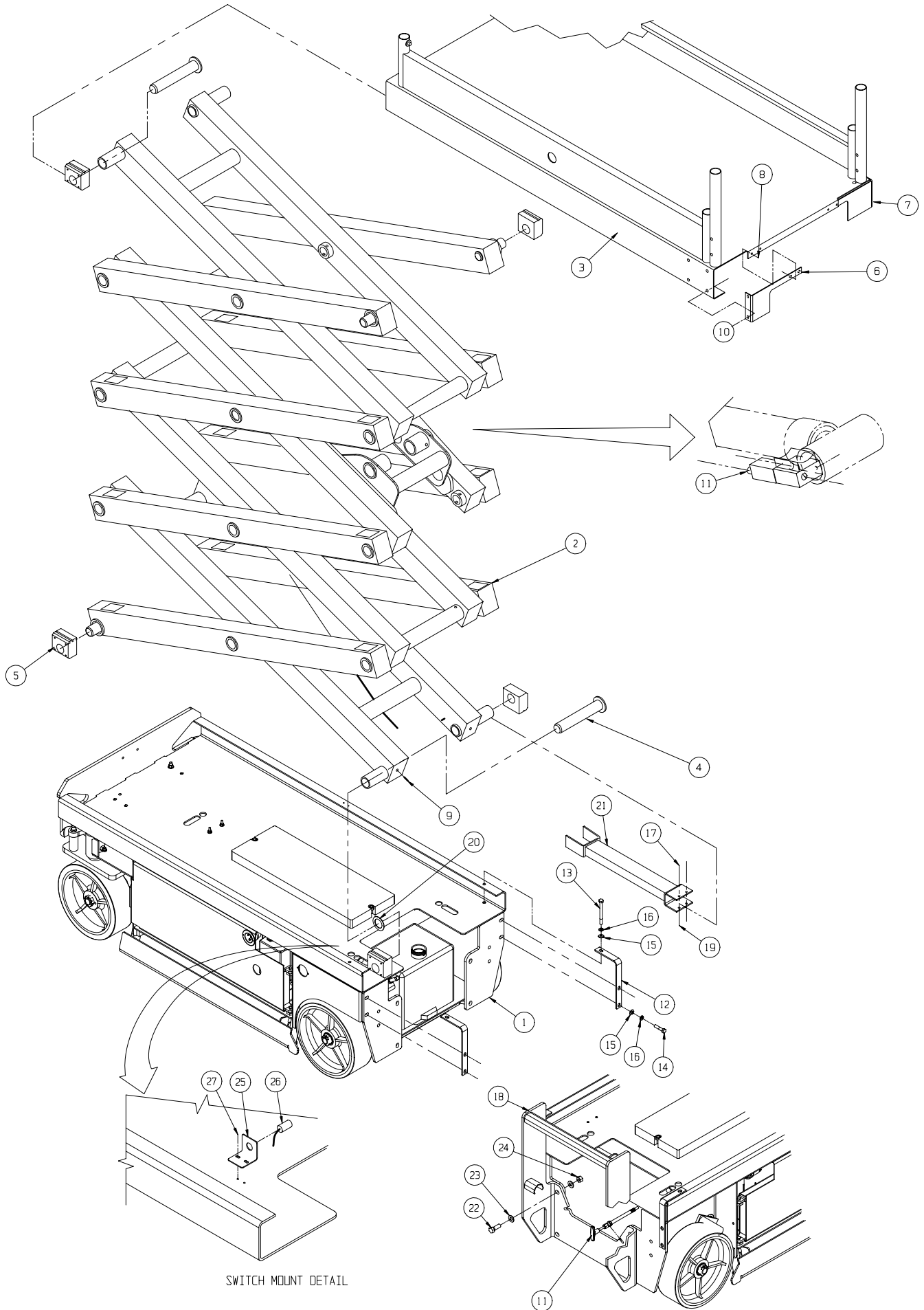
Basic Assembly - MX19

113011-000

| ITEM | PART | DESCRIPTION | QTY | ITEM | PART | DESCRIPTION | QTY |
|------|------------|------------------------------|-----|------|------------|-------------------------------------|-----|
| 1 | 113002-000 | CHASSIS ASS'Y | 1 | 15 | 011240-006 | WASHER 3/8 STD FLAT | 4 |
| 2 | 065705-020 | SCISSOR ARM ASS'Y X19 | 1 | 16 | 011238-006 | LOCK WASHER - 3/8" SPLIT RING | 6 |
| †3 | 066250-001 | PLATFORM WELDMENT | 1 | 17 | 011829-022 | CARRIAGE BOLT 1/4-20 X 2-3/4 PLATED | 2 |
| 4 | 065698-000 | LOWER PIVOT PIN WELDMENT | 4 | †18 | 066307-005 | LADDER WELDMENT | 1 |
| 5 | 065726-000 | SLIDE PAD | 8 | 19 | 011248-004 | LOCKNUT 1/4-20 UNC ESNA | 2 |
| ‡6 | 065728-000 | DECK BRACKET L.H. | 1 | 20 | 011786-007 | BUSHING - MACHINERY | 2 |
| ‡7 | 065727-000 | DECK BRACKET R.H. | 1 | †21 | 065764-000 | SCISSOR CHOCK WELDMENT X15/19 | 1 |
| 8 | 014027-006 | SCREW HHD SLFTP 1/4-28 x 3/4 | 4 | 22 | 011256-012 | SCREW HHC 1/2-13UNC X 1 1/2 | 4 |
| 9 | 011739-020 | ROLLPIN 3/8 DIA. x 2 1/2 | 4 | 23 | 011240-008 | WASHER 1/2 STD FLAT | 8 |
| 10 | 014066-008 | SCREW SLFTP 1/4-AB x 1 | 16 | 24 | 011248-008 | LOCKNUT 1/2-13 UNC ESNA | 4 |
| 11 | 065754-006 | EMERGENCY LOWERING CABLE | 1 | ‡25 | 067318-000 | SWITCH BRACKET | 1 |
| ‡12 | 065937-001 | BEARING RETENTION ANGLE | 2 | 26 | 067193-001 | SWITCH ASSY | 1 |
| 13 | 011254-034 | SCREW HHC 3/8-16UNC X 4 1/4 | 2 | 27 | 011252-006 | SCREW - 1/4-20 UNC X 3/4 | 2 |
| 14 | 011254-014 | SCREW HHC 3/8-16UNC X 1 3/4 | 4 | | | | |

† Reference Only - components included in weldment kit.

‡ Reference Only - components included in paint kit.



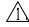

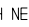

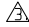
Scissor Arm Assembly - MX15

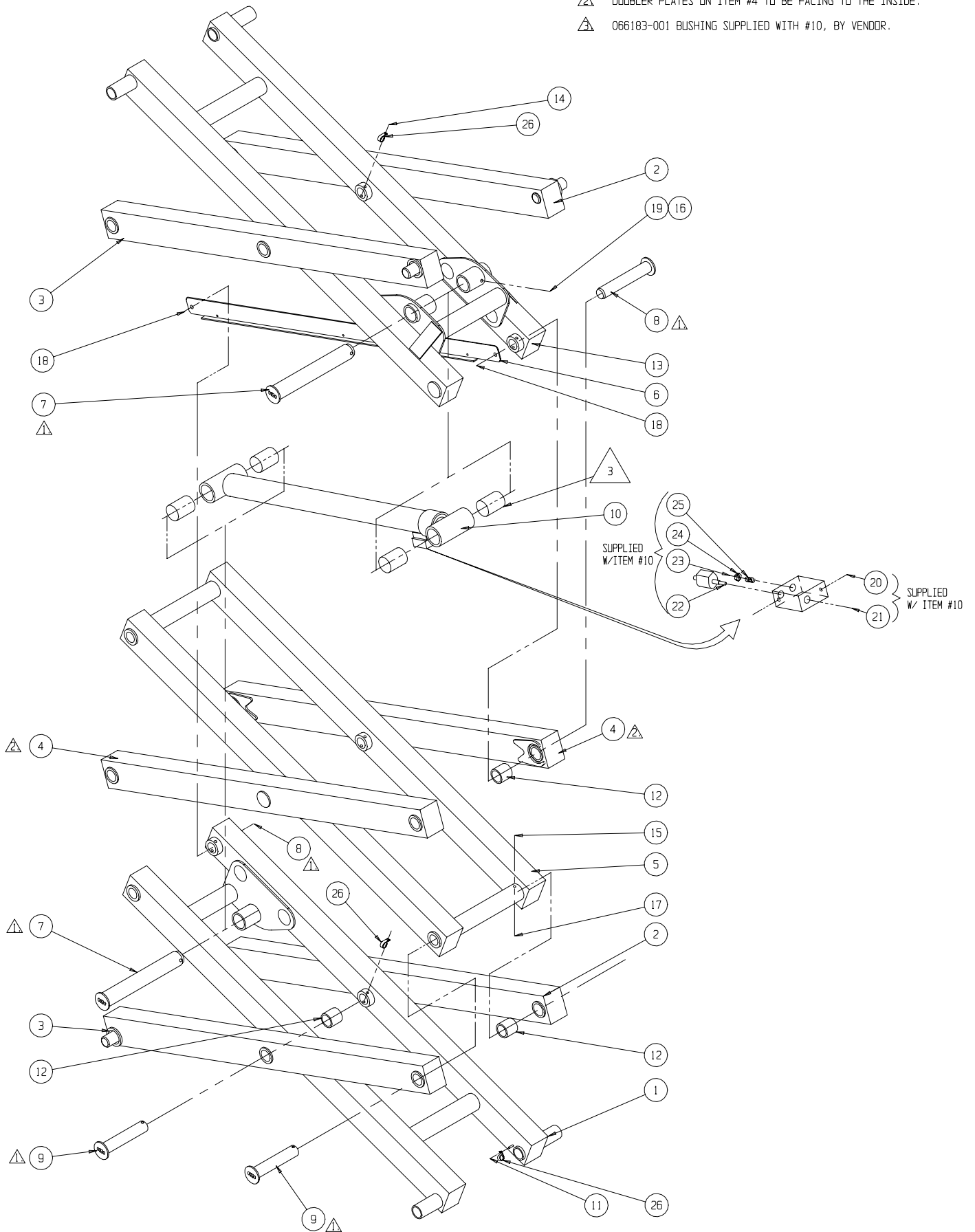
065605-020

| ITEM | PART | DESCRIPTION | QTY | ITEM | PART | DESCRIPTION | QTY |
|------|------------|----------------------------|-----|------|------------|------------------------------|-----|
| †1 | 065640-000 | INNER ARM WELDMENT | 1 | 14 | 011253-024 | SCREW 5/16-18UNC HHC X 3 | 3 |
| †2 | 065671-000 | OUTER BEAM EWLDMENT R.H. | 2 | 15 | 011253-022 | SCREW 5/16-18UNC HHC X 2 3/4 | 11 |
| †3 | 065672-000 | OUTER BEAM WELDMENT L.H. | 2 | 16 | 011254-026 | SCREW 3/8-16UNC HHC X 3 1/4 | 2 |
| †4 | 065675-001 | OUTER BEAM WELDMENT | 2 | 17 | 011248-005 | LOCKNUT 5/16-18UNC HEX | 14 |
| †5 | 065677-000 | INNER CENTER BEAM WELDMENT | 1 | 19 | 065688-000 | GUARD RIVET | 2 |
| ‡6 | 065687-000 | CABLE GUIDE | 1 | 21 | 011248-006 | LOCKNUT 3/8-16UNC HEX | 2 |
| 7 | 065696-000 | CYLINDER PIN WELDMENT | 2 | 22 | 012004-004 | PLUG #4 | REF |
| 8 | 065697-000 | PIN KEEPER WELDMENT | 2 | 23 | 012004-006 | PLUG #6 | REF |
| 9 | 065920-000 | PIVOT PIN WELDMENT | 12 | 25 | 066179-000 | VALVE | REF |
| 10 | 065372-021 | LIFT CYLINDER ASSY. | 1 | 26 | 011941-005 | FITTING 6MB-6MJ ST | REF |
| * | 065372-012 | SEAL KIT, LIFT CYLINDER | REF | 27 | 015919-001 | ORIFICE #840 | REF |
| 11 | 011248-004 | LOCKNUT 1/4-20UNC HEX | 1 | 28 | 05133-000 | SPRING | REF |
| 12 | 066183-002 | BUSHING | 14 | 29 | 013919-009 | CLAMP | 3 |
| †13 | 065640-001 | INNER ARM WELDMENT | 1 | | | | |

† Reference Only - components included in weldment kit.

‡ Reference Only - components included in paint kit.

- NOTES:  COAT PINS   WITH NEVER SIEZE BEFORE INSTALLING.
 DOUBLER PLATES ON ITEM #4 TO BE FACING TO THE INSIDE.
 066183-001 BUSHING SUPPLIED WITH #10, BY VENDOR.



Scissor Arm Assembly - MX19

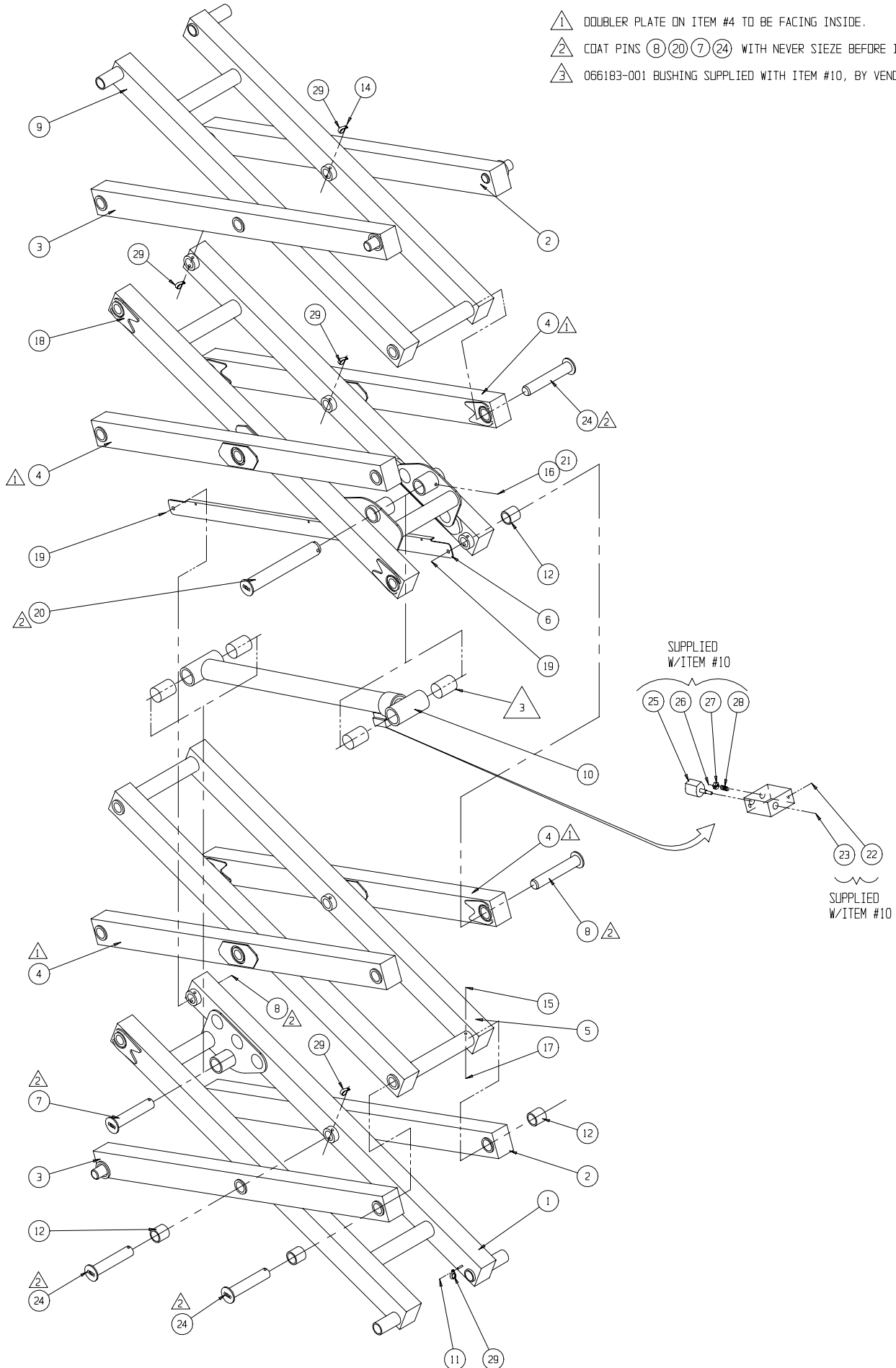
065705-020

| ITEM | PART | DESCRIPTION | QTY | ITEM | PART | DESCRIPTION | QTY |
|------|------------|------------------------------|-----|------|------------|-----------------------------|-----|
| †1 | 065640-001 | INNER ARM WELDMENT | 1 | 16 | 011254-026 | SCREW 3/8-16UNC HHC X 3 1/4 | 2 |
| †2 | 065671-000 | OUTER BEAM WELDMENT R.H. | 2 | 17 | 011248-005 | LOCKNUT 5/16-18UNC HEX | 20 |
| †3 | 065672-000 | OUTER BEAM WELDMENT L.H. | 2 | †18 | 065722-000 | INNER BEAM WELDMENT | 1 |
| †4 | 065675-000 | OUTER BEAM WELDMENT | 4 | 19 | 065688-000 | GUARD RIVET | 2 |
| †5 | 065677-000 | INNER CENTER BEAM WELDMENT | 1 | 20 | 065750-000 | CYLINDER PIN WELDMENT | 1 |
| ‡6 | 065687-000 | CABLE GUIDE | 1 | 21 | 011248-006 | LOCKNUT 3/8-16UNC HEX | 2 |
| 7 | 065696-000 | CYLINDER PIN WELDMENT | 1 | 22 | 012004-004 | PLUG #4 | REF |
| 8 | 065697-000 | PIN KEEPER WELDMENT | 2 | 23 | 012004-006 | PLUG #6 | REF |
| †9 | 065721-000 | UPPER BEAM WELDMENT | 1 | 24 | 065920-000 | PIVOT PIN WELDMENT | 18 |
| 10 | 065372-021 | LIFT CYLINDER ASSY. | 1 | 25 | 066179-000 | VALVE | REF |
| * | 065372-012 | SEAL KIT, LIFT CYLINDER | REF | 26 | 011941-005 | FITTING 6MB-6MJ ST | REF |
| 11 | 011248-004 | LOCKNUT 1/4-20UNC HEX | 1 | 27 | 015919-001 | ORIFICE | REF |
| 12 | 066183-002 | BUSHING | 20 | 28 | 05133-000 | SPRING | REF |
| 14 | 011253-024 | SCREW 5/16-18UNC HHC X 3 | 4 | 29 | 013919-009 | CLAMP | 4 |
| 15 | 011253-022 | SCREW 5/16-18UNC HHC X 2 3/4 | 16 | | | | |

† Reference Only - components included in weldment kit.

‡ Reference Only - components included in paint kit.

- ⚠ DOUBLER PLATE ON ITEM #4 TO BE FACING INSIDE.
- ⚠ COAT PINS (8) (20) (7) (24) WITH NEVER SIEZE BEFORE INSTALLING.
- ⚠ 066183-001 BUSHING SUPPLIED WITH ITEM #10, BY VENDOR.



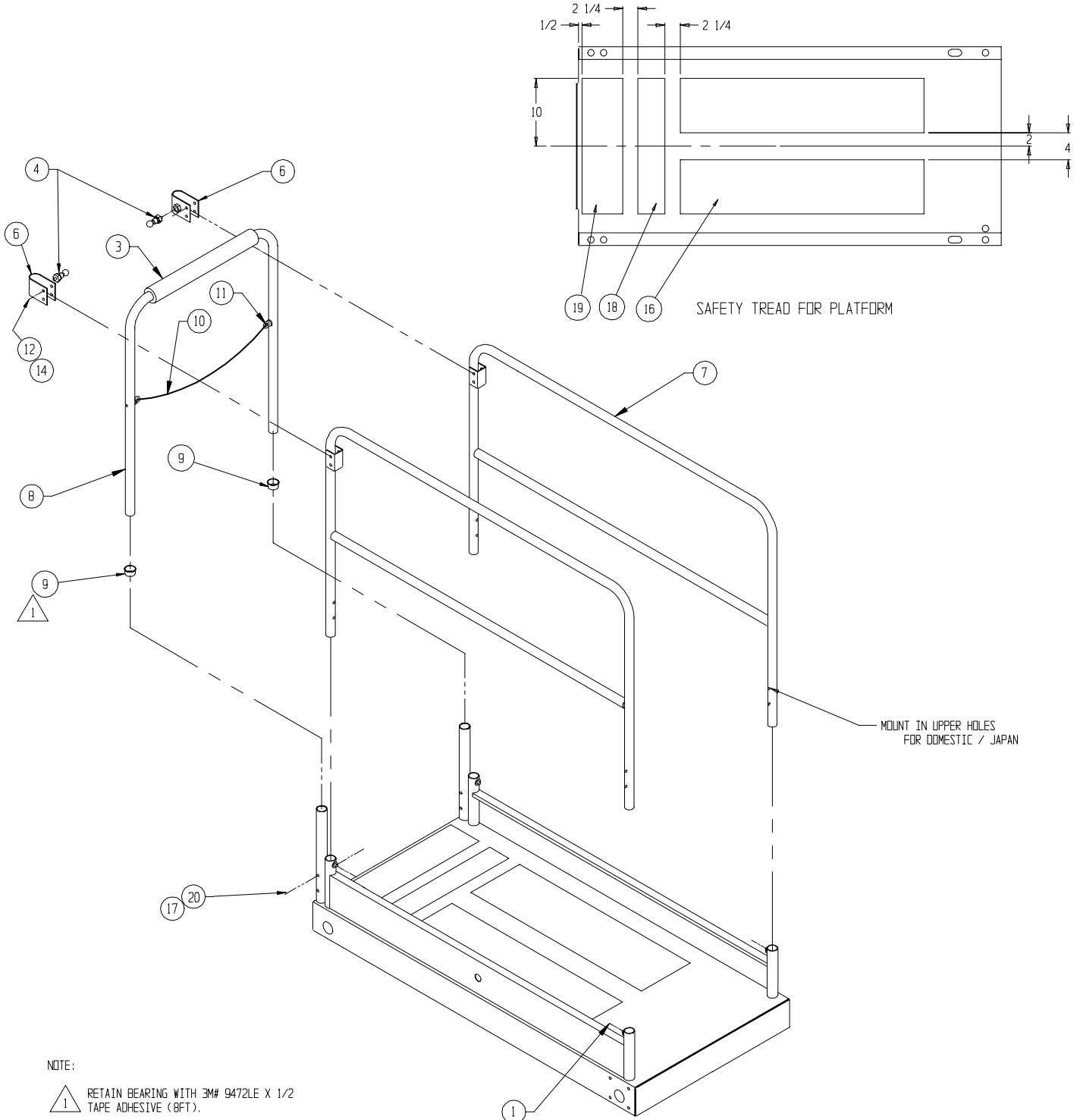
Platform Guardrail Installation

065603-004

| ITEM | PART | DESCRIPTION | QTY |
|------|------------|-----------------------------------|-----|
| 1 | 066171-003 | TAP BOLT 3/8-16 X 2 (FULL THREAD) | 4 |
| 3 | 066692-022 | FOAM TUBING | 1 |
| 4 | 003570-005 | RETAINING PIN ASSY | 2 |
| ‡6 | 066498-000 | WELDMENT, GATE LATCH | 2 |
| ‡7 | 066257-007 | WELDMENT SIDE RAIL | 2 |
| ‡8 | 066261-001 | WELDMENT, END RAIL | 1 |
| 9 | 065987-000 | CAPLUG BEARING | 2 |
| 10 | 063133-003 | CHAIN ASS'Y | 1 |

| ITEM | PART | DESCRIPTION | QTY |
|------|------------|---------------------------|-----|
| 11 | 015748-002 | REPAIR LINK | 1 |
| 12 | 011248-005 | NUT 5/16-18 | 4 |
| 14 | 011253-018 | SCREW 5/16-18 HHC X 2 1/4 | 4 |
| 16 | 060830-002 | SAFETY WALK 8 X 36 | 2 |
| 17 | 011254-018 | SCREW 3/8-16 HHC X 2 1/4 | 2 |
| 18 | 060830-001 | SAFETY WALK 4 X 20 | 1 |
| 19 | 060830-003 | SAFETY WALK 6 X 21 | 1 |
| 20 | 011248-006 | NUT 3/8-16 HEX | 2 |

‡ Reference Only - components included in paint kit.



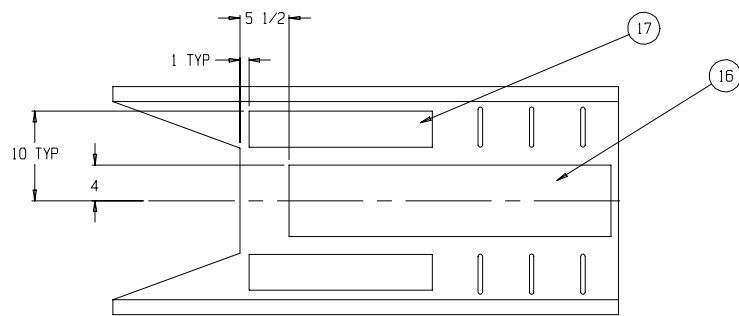
Deck Extension Assembly

065614-000

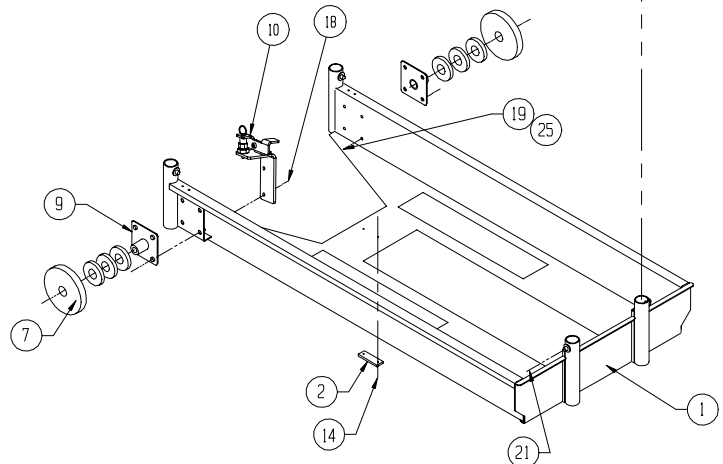
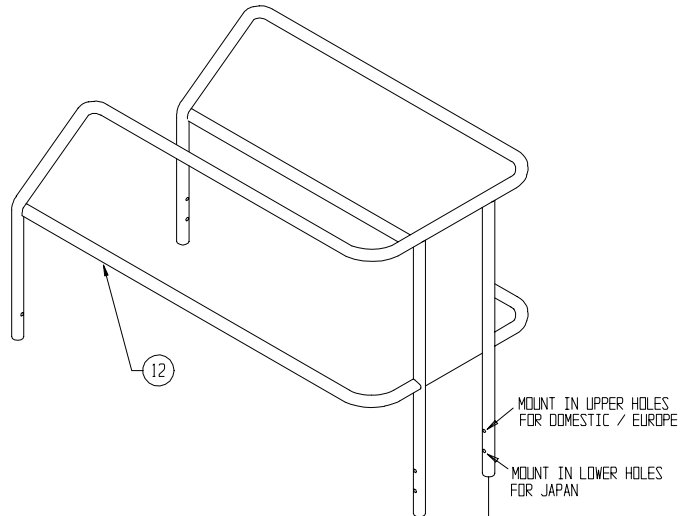
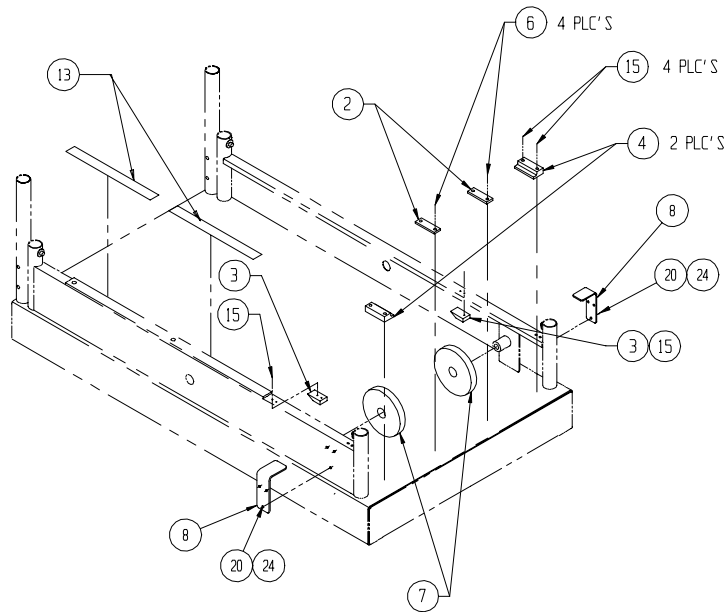
| ITEM | PART | DESCRIPTION | QTY | ITEM | PART | DESCRIPTION | QTY |
|------|------------|----------------------------|------|------|------------|------------------------------|-----|
| †1 | 066251-001 | WELDMENT DECK EXT. | 1 | 14 | 026553-004 | RIVET 3/16 DIA X 3/8 GRIP | 2 |
| 2 | 066198-000 | WEAR PAD | 3 | 15 | 026553-008 | RIVET 3/16 DIA X 1/2 GRIP | 8 |
| 3 | 066193-000 | STOP | 2 | 16 | 060830-002 | SAFETY WALK 8 X 36 | 1 |
| 4 | 066176-000 | WEAR PAD | 2 | 17 | 060830-001 | SAFETY WALK 4 X 20 | 2 |
| 6 | 026553-002 | RIVET 3/16 DIA X .126-.250 | 4 | 18 | 011254-016 | SCREW HHC 3/8-16 X 2 | 2 |
| 7 | 066195-000 | PLATFORM ROLLER | 4 | 19 | 011254-014 | SCREW HHC 3/8-16 X 1 3/4 | 6 |
| ‡8 | 066407-011 | BRACKET | 2 | 20 | 011252-006 | SCREW HHC 1/4-20 X 3/4 | 8 |
| †9 | 066256-000 | WELDMENT ROLLER MOUNT | 2 | 21 | 066171-003 | BOLT TAP 3/8-16UNC X 2 | 4 |
| 10 | 067185-000 | WELDMENT DECK STOP | 1 | 24 | 011240-004 | WASHER 1/4 FLAT | 16 |
| †12 | 066260-001 | WELDMENT EXT. RAIL X15 | 1 | 25 | 011238-006 | WASHER 3/8 LOCK | 8 |
| 13 | 065988-099 | TAPE UHMW 1" | FT 3 | 26 | 014996-020 | WASHER SAE 1-1/4 ZINC PLATED | 6 |

† Reference Only - components included in weldment kit.

‡ Reference Only - components included in paint kit.



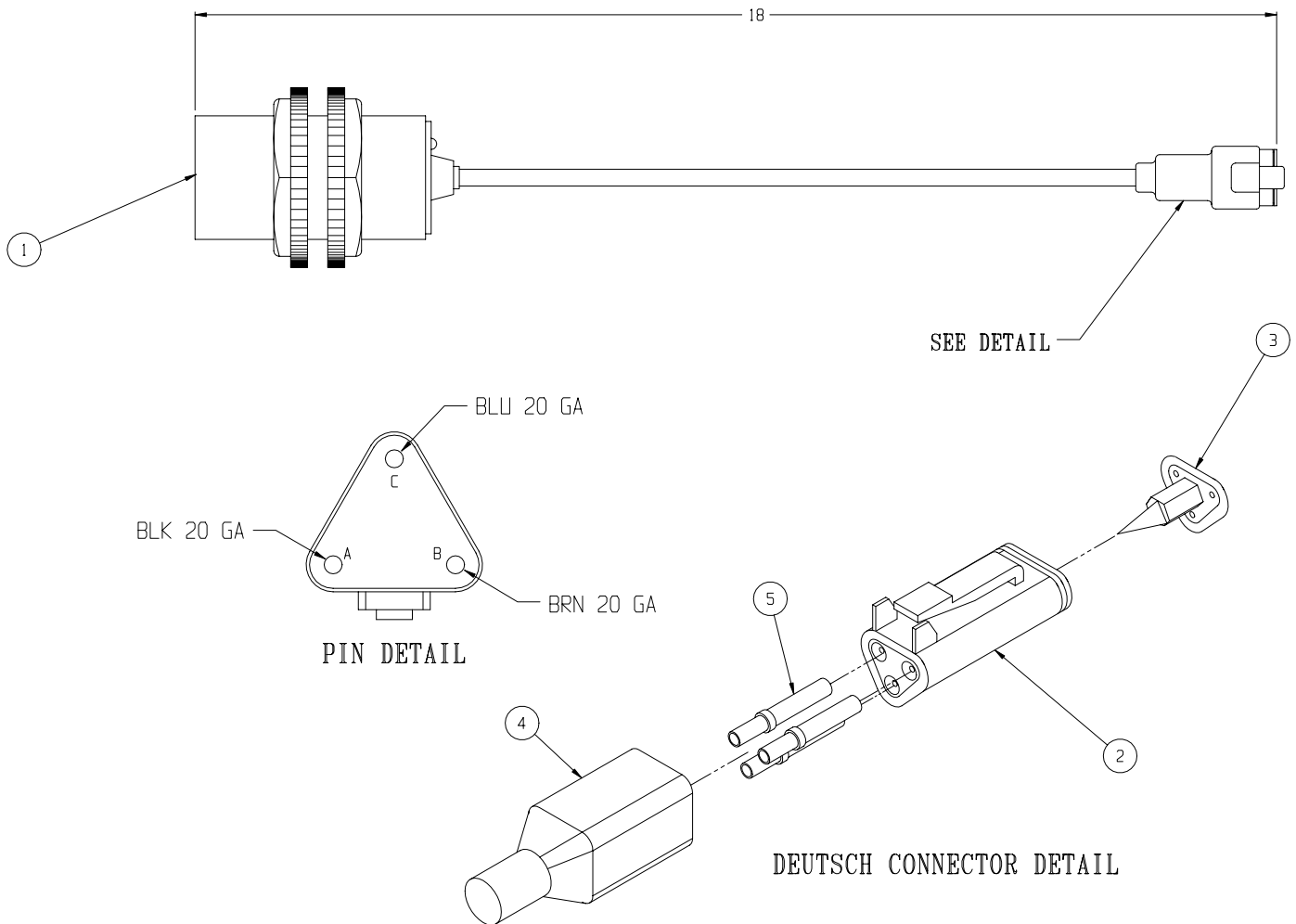
SAFETY TREAD FOR ROLL OUT DECK



Proximity Switch Assembly

067193-001

| ITEM | PART | DESCRIPTION | QTY |
|------|------------|----------------------------------|-----|
| 1 | REF. | PROX. SWITCH, LOCON IKCT3014 | 1 |
| 2 | 067456-000 | CONNECTOR, DEUTSCH #DT06-3S-P012 | 1 |
| 3 | 067456-002 | LOCKING WEDGE, DEUTSCH #W3S-P012 | 1 |
| 4 | 067456-005 | BOOT, DEUTSCH #DT3S-BT | 1 |
| 5 | 068762-003 | CONTACT, DEUTSCH #0462-201-16141 | 3 |



NOTES:

Chassis Assembly

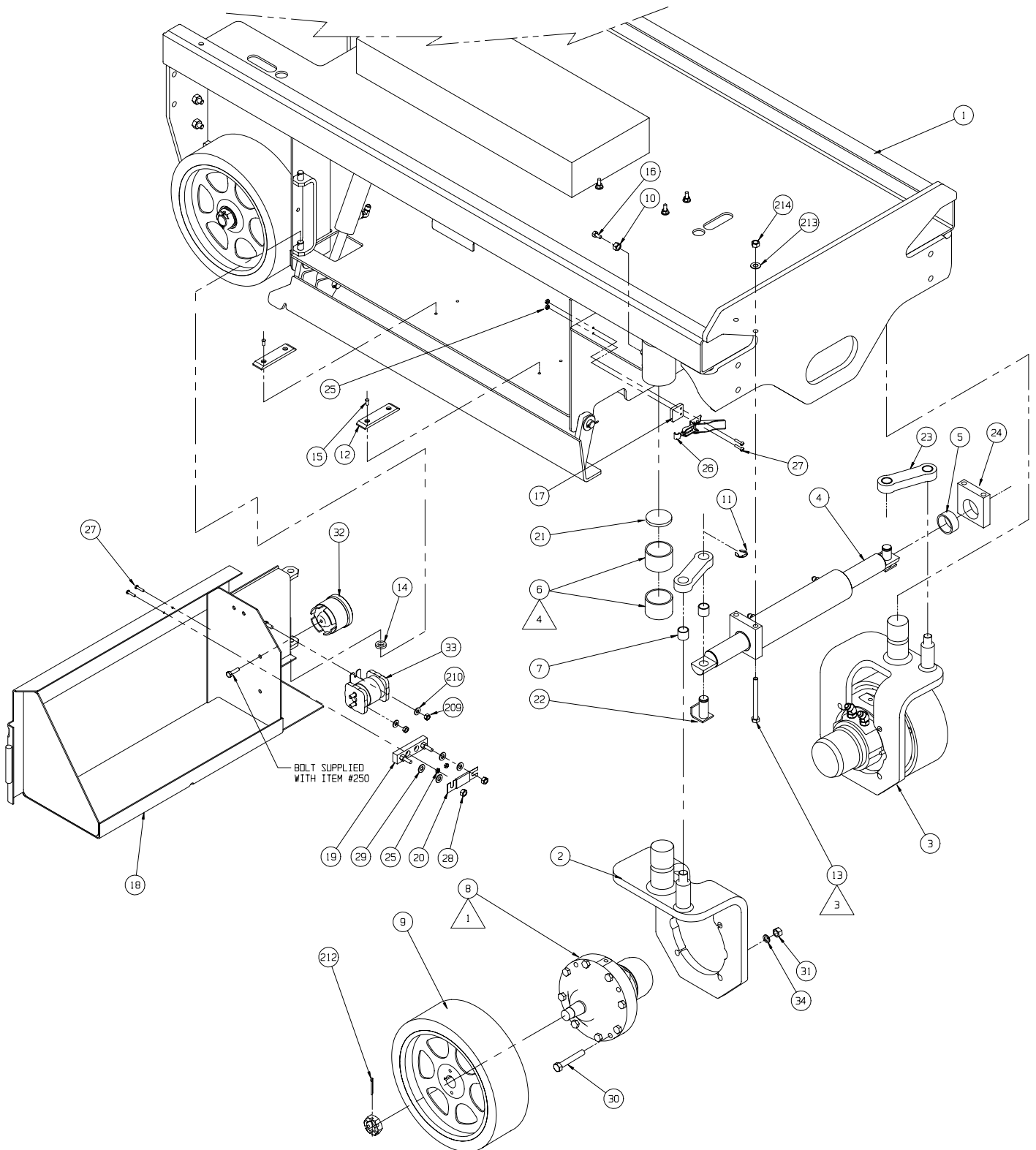
113002-000

| ITEM | PART | DESCRIPTION | QTY | ITEM | PART | DESCRIPTION | QTY |
|------|------------|-----------------------------------|-----|------|------------|-----------------------------|-----|
| †1 | 065620-025 | CHASSIS WELDMENT | 1 | †18 | 065650-001 | TRAY WELDMENT R.H. X15/19 | 1 |
| †2 | 113063-000 | YOKE WELDMENT R.H. | 1 | 19 | 010149-000 | FUSE BLOCK | 1 |
| †3 | 113064-000 | YOKE WELDMENT L.H. | 1 | 20 | 010148-001 | FUSE 175 AMP | 1 |
| 4 | 113051-000 | STEERING CYLINDER ASSEMBLY | 1 | 21 | 065733-000 | THRUST PAD 1/4 UHMW | 2 |
| * | 065371-011 | SEAL KIT | REF | †22 | 065800-000 | WELDMENT, STEER PIN | 2 |
| 5 | 027931-072 | BEARING | 2 | ‡23 | 065731-000 | STEER LINK X15/19 | 2 |
| 6 | 027931-059 | BEARING | 4 | ‡24 | 065732-000 | STEER GUIDE | 2 |
| 7 | 027931-022 | BEARING | 4 | 25 | 011248-002 | LOCK NUT 8-32 | 6 |
| 8 | 113065-000 | DRIVE MOTOR ASSEMBLY | 2 | 26 | 005299-000 | LATCH TOGGLE | 2 |
| 9 | 065743-005 | DRIVE WHEEL | 2 | 27 | 011708-006 | SCREW MACH RD HD 8-32 x 3/4 | 6 |
| 10 | 011273-006 | NUT HEX 3/8-16 JAM | 2 | 28 | 011248-005 | LOCK NUT 5/16-18 | 2 |
| 11 | 013315-010 | RING, RETAINING "E" | 2 | 29 | 011240-005 | WASHER FLAT STD 5/16 | 4 |
| 12 | 063728-001 | SLIDE BLOCK | 4 | 30 | 011255-028 | SCREW HHC 7/16-14 UNC | 8 |
| 13 | 011254-032 | SCREW HHC 3/8-16 x 4 | 4 | 31 | 011248-007 | LOCK NUT 7/16-14 | 8 |
| 14 | 011782-010 | THRUST WASHER 1/2 X 7/8 X 3/16 LG | 2 | 32 | 066807-001 | ALARM DUAL TONE | 1 |
| 15 | 026553-004 | RVT POP 3/16 DIA. .25-.38 GRIP | 8 | 33 | 010122-001 | SOLENOID RELAY, MOTOR | 1 |
| 16 | 011705-016 | SCREW SET 3/8-16 x 1 HEX SOC | 2 | 34 | 011239-007 | WASHER FLAT 7/16 ASTM | 8 |
| ‡17 | 064754-000 | SPACER LATCH | 2 | | | | |

† Reference Only - components included in weldment kit.

‡ Reference Only - components included in paint kit.

Drawing #1 of 3



NOTES:

- 1. 1"-20 UNF SLOTTED NUT & 1/8" COTTER PIN INCLUDED WITH (ITEM 8) DRIVE MOTOR. CLEAN MOTOR SHAFT AND HUB BORE LUBRICATE NUT FACE AND THREADS. TORQUE NUTS TO 75 ±5 FT.-LBS. AFTER TORQUEING NUTS, MASK AROUND NUT AND COTTER PIN AND PAINT NUT, COTTER PIN, AND SHAFT SILVER
- 2. WHEN INSTALLING REAR WHEELS (ITEM 203), TIGHTEN CASTLE NUTS SNUGLY, THEN BACK-OFF NUT UNTIL WHEEL TURNS FREELY. INSTALL COTTER PIN
- 3. INSTALL BOLTS AS SHOWN TO REDUCE HYDRAULIC HOSE DAMAGE

- 4. LOCKTITE (80 GREEN) BEARINGS (ITEM 6) TO CHASSIS
- 5. UNLESS OTHERWISE NOTED, TORQUE FASTENERS PER UPRIGHT SPEC. #105, TORQUE FITTINGS PER UPRIGHT SPEC #106
- 6. SEVCON DIPP SWITCH SETTINGS BELOW.

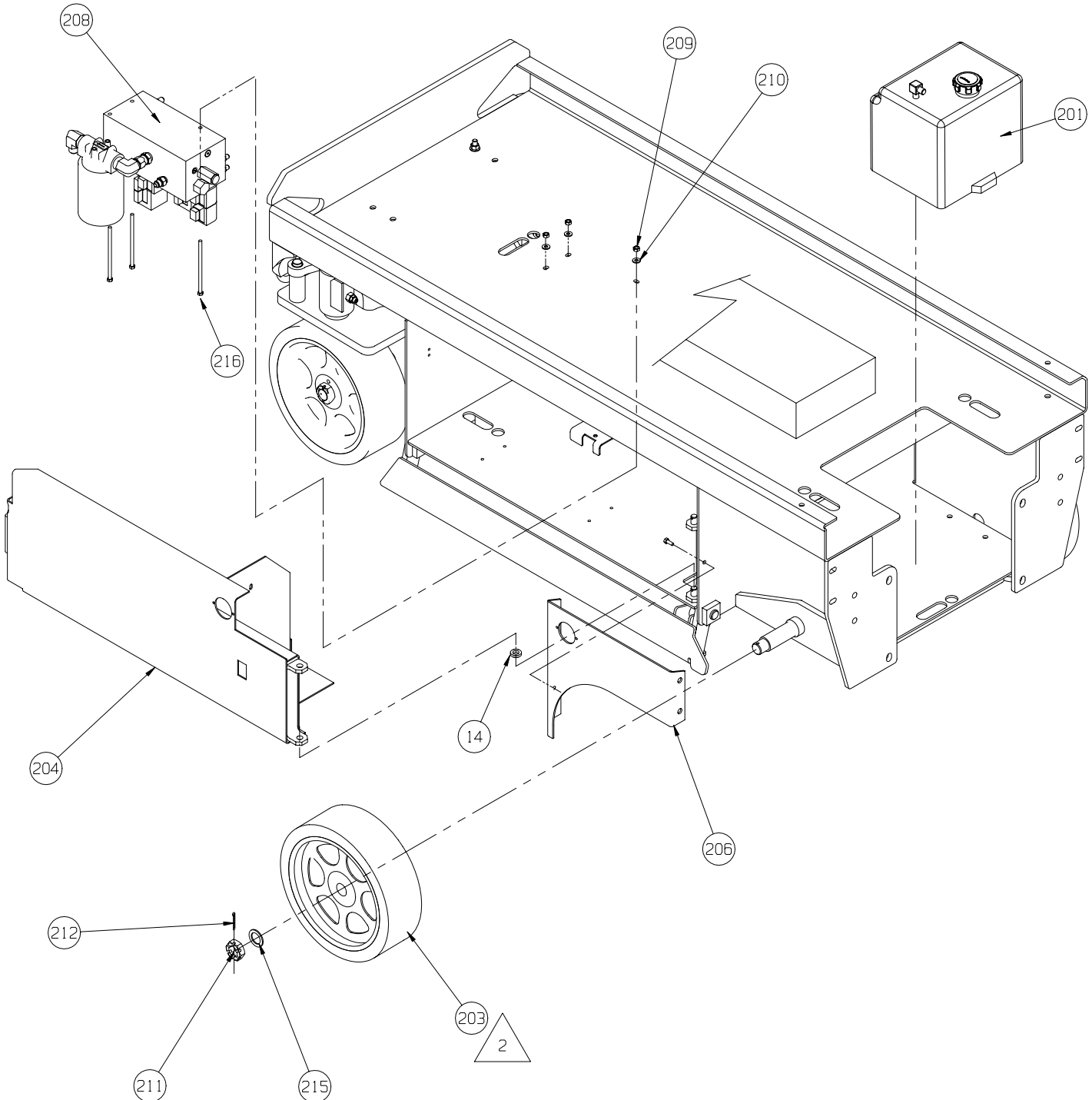
| SW1 | 2 | 3 | 4 | 5 | 6 | 7 | 8 |
|-----|-----|-----|----|-----|----|-----|----|
| OFF | OFF | OFF | ON | OFF | ON | OFF | ON |

Drawing #2 of 3

| ITEM | PART | DESCRIPTION | QTY |
|------|------------|---------------------------|-----|
| 201 | 101152-001 | HYDRAULIC TANK ASS'Y X15 | 1 |
| 203 | 065744-021 | IDLER WHEEL ASSEMBLY | 2 |
| †204 | 065657-002 | TRAY WELDMENT L.H. | 1 |
| 205 | 011254-010 | SCREW HHC 3/8-16 X 1 1/4 | 8 |
| †206 | 065979-002 | WHEEL COVER WELDMENT L.H. | 1 |
| 207 | 065270-000 | FORKLIFT POCKET | 1 |
| 208 | 113052-000 | VALVE BLOCK ASSEMBLY | 1 |
| 209 | 011248-004 | LOCK NUT 1/4-20 | 11 |

| ITEM | PART | DESCRIPTION | QTY |
|------|------------|----------------------------------|-----|
| 210 | 011240-004 | WASHER FLAT STD 1/4 | 9 |
| 211 | 015945-016 | NUT SLOTTED HEX JAM 1-14 UNF | 2 |
| 212 | 011754-012 | COTTER PIN 5/32 x 1-1/2 | 4 |
| 213 | 011240-006 | WASHER FLAT STD 3/8 | 20 |
| 214 | 011248-006 | LOCK NUT 3/8-16 | 14 |
| 215 | 063329-008 | WASHER, FLAT 1" I.D. 1 1/2" O.D. | 2 |
| 216 | 011252-040 | SCREW HHC 1/4-20 UNC X 5 | 3 |

† Reference Only - components included in weldment kit.



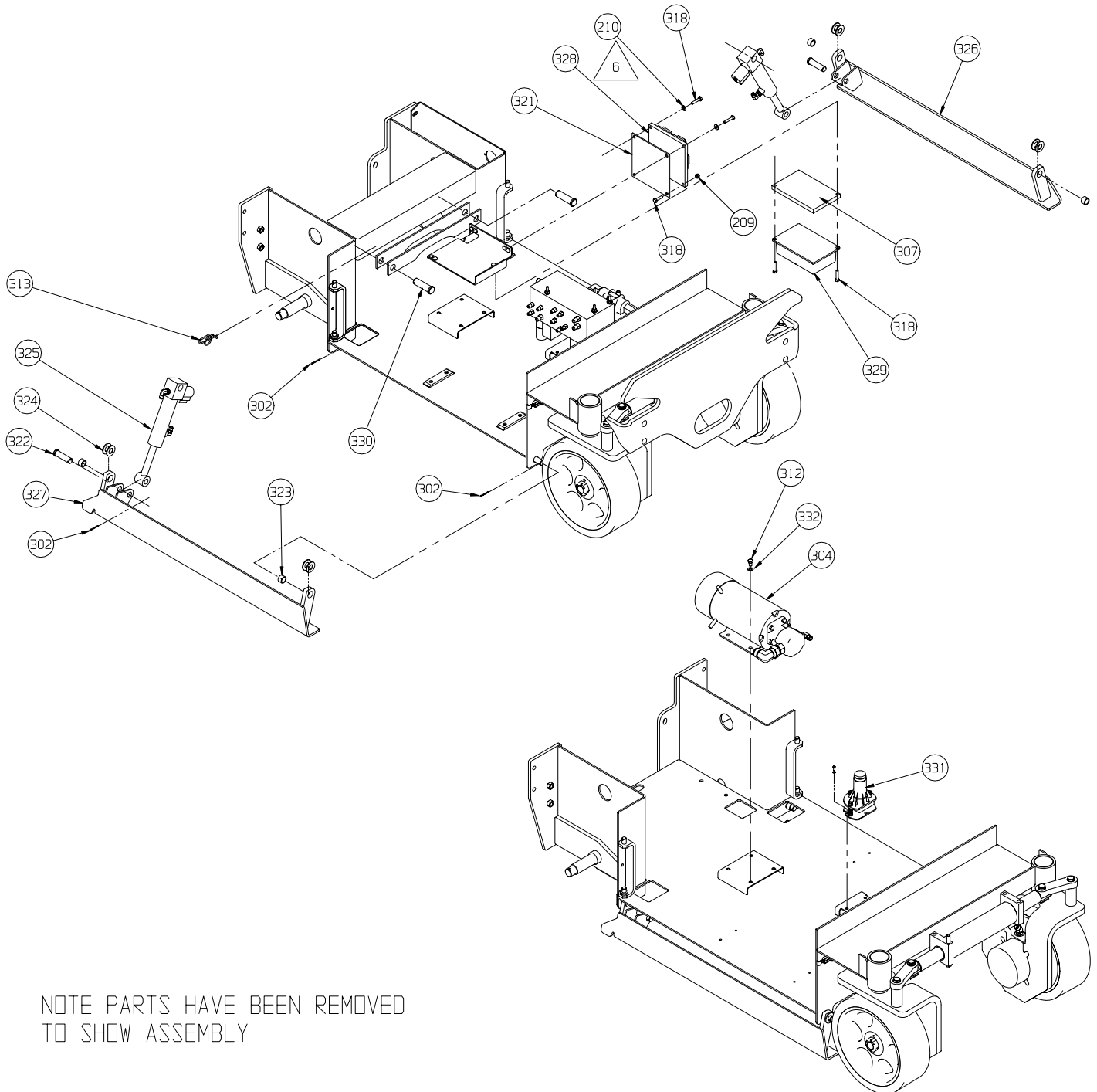
Drawing #3 of 3

| ITEM | PART | DESCRIPTION | QTY |
|------|------------|------------------------------------|-----|
| 302 | 011753-012 | COTTER PIN 1/8 X 1 1/2 | 6 |
| 304 | 113055-000 | POWER UNIT ASSEMBLY | 1 |
| 307 | 065984-000 | HEAT SINK | 1 |
| 312 | 011254-004 | SCREW HHC 3/8-16 X 1/2 | 4 |
| 313 | 011757-010 | COTTER RUE RING | 4 |
| 318 | 012553-012 | SCREW, SOCKET HD 1/4-20UNC X 1-1/2 | 2 |
| ‡321 | 065264-000 | PLATE - CIRCUIT BOARD | 1 |
| 322 | 011848-036 | CLEVIS PIN 5/8 X 2 1/4 | 2 |
| 323 | 011780-040 | BEARING 5/8 X 13/16 X 1/2 LG | 4 |
| 324 | 014996-010 | WASHER 5/8 SAE FLAT PLATED | 8 |

| ITEM | PART | DESCRIPTION | QTY |
|------|-------------|-------------------------------|-----|
| 325 | 113053-000 | CYL. ASSY - DEPRESSION RAIL | 2 |
| * | 065970-001 | SEAL KIT | REF |
| †326 | 065971-020 | DEPRESSION RAIL WELDMENT L.H. | 1 |
| †327 | 065971-021 | DEPRESSION RAIL WELDMENT R.H. | 1 |
| 328 | 065709-001 | CIRCUIT BOARD | 1 |
| 329 | 065708-001 | MOTOR CONTROL | 1 |
| 330 | 011848-019 | CLEVIS PIN 3/4 X 2 1/2 | 2 |
| 331 | (SEE FINAL) | LEVEL SENSOR | REF |
| 332 | 011240-006 | 3/8 FLAT WASHER | 4 |

† Reference Only - components included in weldment kit.

‡ Reference Only - components included in paint kit.

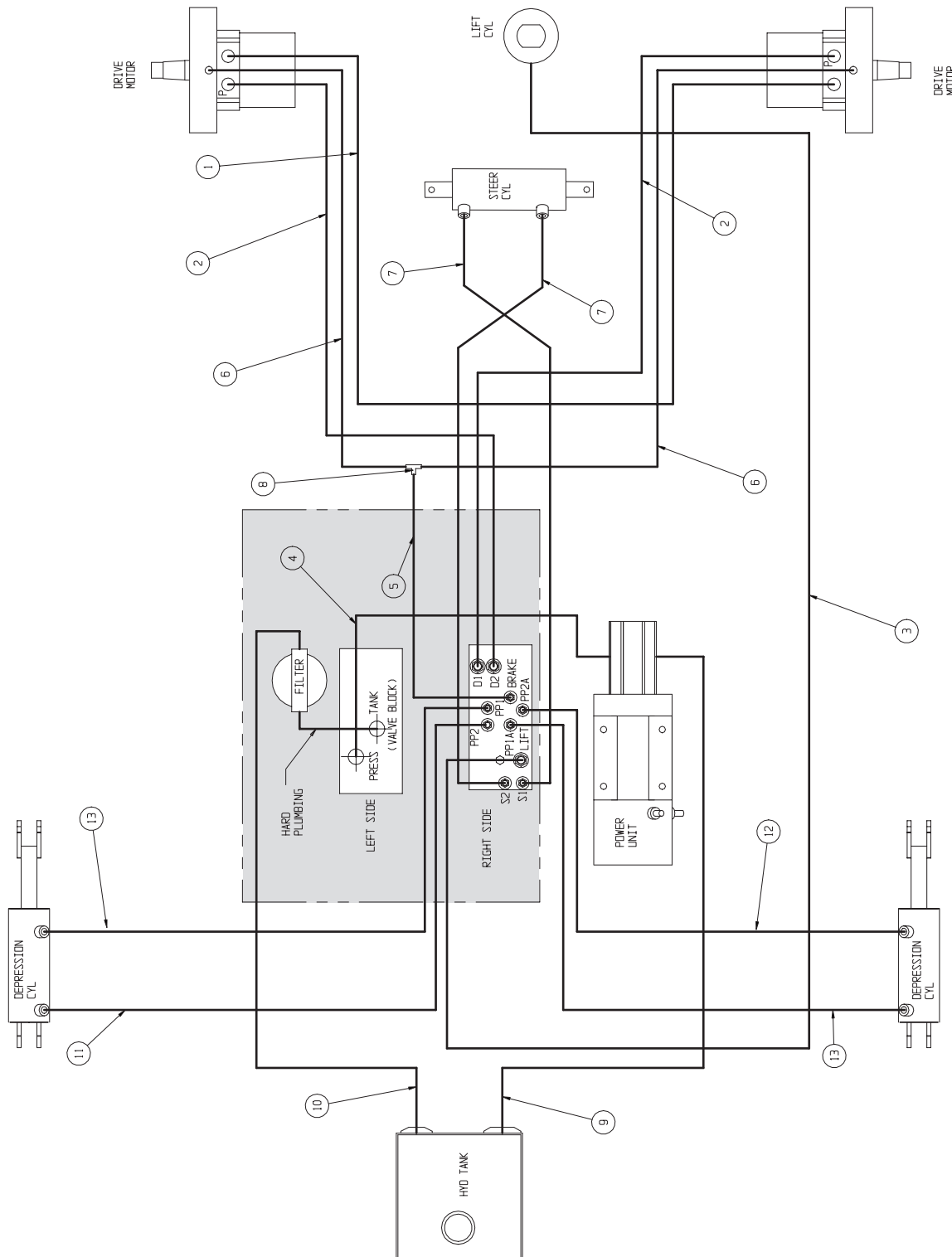


NOTE PARTS HAVE BEEN REMOVED
TO SHOW ASSEMBLY

Hose Kit Installation

113006-000

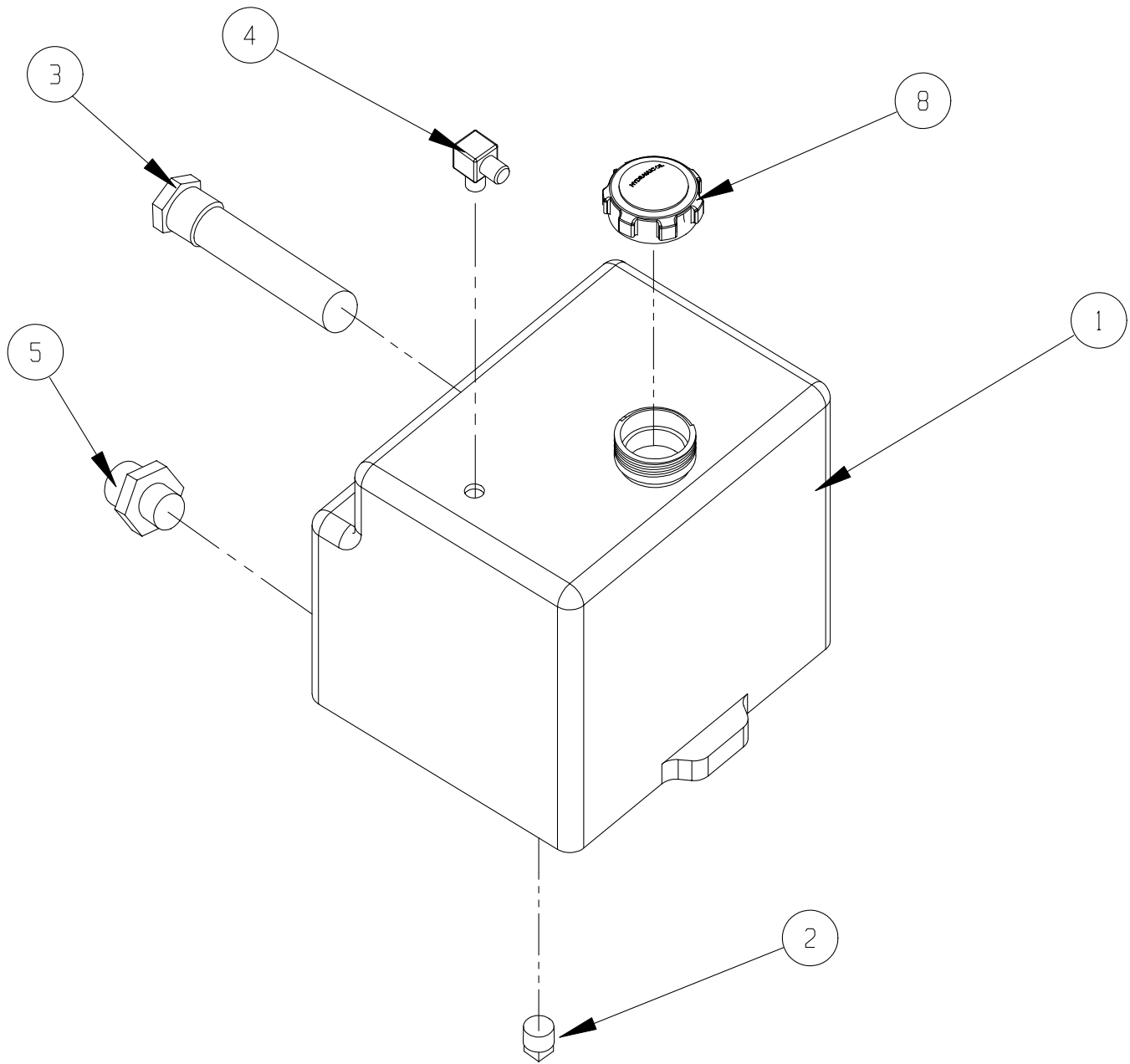
| ITEM | PART | DESCRIPTION | QTY | ITEM | PART | DESCRIPTION | QTY |
|------|------------|--------------------------------------|-----|------|------------|-------------------------------------|-----|
| 1 | 114061-037 | HOSE ASSY 3/8 X 37 (8FJX-8FJX) | 1 | 8 | 020032-001 | TEE FITTING 4MJ-4MJ-4MJ | 1 |
| 2 | 113067-034 | HOSE ASSY 3/8 X 34 (8FJX-6FJX X 90) | 2 | 9 | 061789-017 | HOSE ASSY 3/4 X 17 1/2 (12FJX-12MP) | 1 |
| 3 | 068965-150 | HOSE ASSY 3/8 X 150 (6FJX-6FJX X 90) | 1 | 10 | 064156-021 | HOSE ASSY 1/2 X 42 (8FJX-8FJX) | 1 |
| 4 | 107096-013 | HOSE ASSY 3/8 X 13 (6FJX-6FJX X 90) | 1 | 11 | 107095-038 | HOSE ASSY 1/4 X 38 (4FJX-4FJX90) | 1 |
| 5 | 107090-013 | HOSE ASSY 1/4 X 13 (4FJX-4FJX X 90) | 1 | 12 | 107095-032 | HOSE ASSY 1/4 X 32 (4FJX-4FJX90) | 1 |
| 6 | 107090-024 | HOSE ASSY 1/4 X 24 (4FJX-4FJX X 90) | 2 | 13 | 107095-037 | HOSE ASSY 1/4 X 37 (4FJX-4FJX90) | 2 |
| 7 | 107095-031 | HOSE ASSY 1/4 X 31 (4FJX-4FJX X 90) | 2 | | | | |



Hydraulic Tank Assembly

101152-001

| ITEM | PART | DESCRIPTION | QTY |
|------|------------|------------------------|-----|
| 1 | 101056-001 | TANK, HYDRAULIC | 1 |
| 2 | 021305-006 | PLUG, MAGNETIC | 1 |
| 3 | 061818-000 | STRAINER, SUCTION | 1 |
| 4 | 011940-006 | FITTING ELBOW, 4MP-6MJ | 1 |
| 5 | 011939-006 | FITTING, 8MP-8MJ | 1 |
| 8 | 068982-001 | HYDRAULIC TANK LID | 1 |

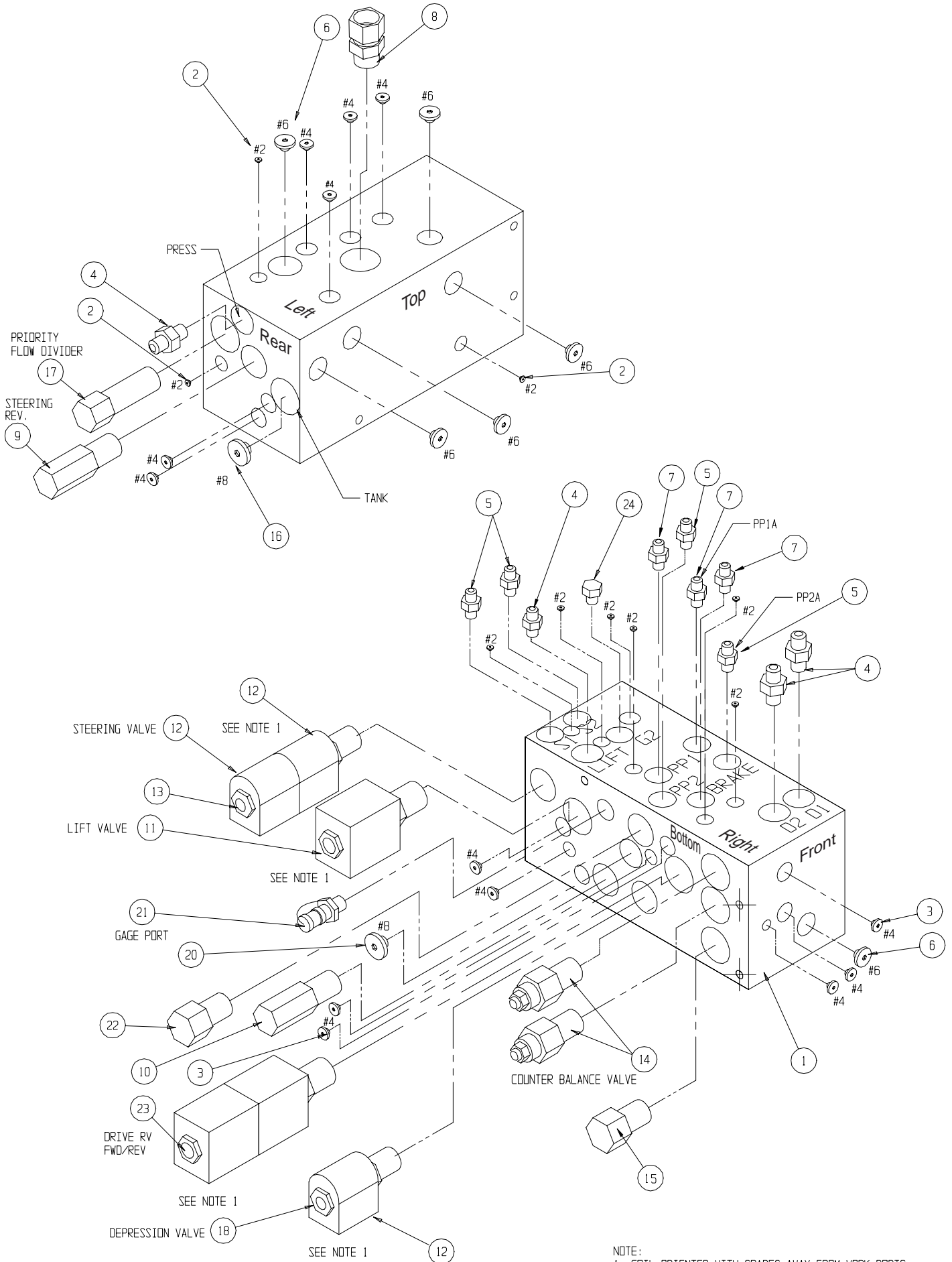


Valve Block

101120-122

| ITEM | PART | DESCRIPTION | QTY. |
|------|------------|------------------------------------|------|
| 1 | 100020-040 | CONTROL VALVE BLOCK | 1 |
| 2 | 012004-002 | FITTING #2 PLUG | 9 |
| 3 | 012004-004 | FITTING #4 PLUG | 15 |
| 4 | 011941-005 | FITTING STRAIGHT 6MB - 6MJ | 4 |
| 5 | 011941-001 | FITTING STR 4MBH - 4MJ | 4 |
| 6 | 012004-006 | FITTING PLUG #6 | 6 |
| 7 | 031006-004 | FITTING STR 4MB-4MJ W/.031 ORIFICE | 3 |
| 8 | 064170-005 | FITTING 8MB-8FJX | 1 |
| 9 | 060390-017 | RELIEF VALVE, STEERING | 1 |
| 10 | 060390-025 | RELIEF VALVE, MAIN | 1 |
| 11 | 063923-006 | 2 POS - 4 WAY SOLENOID W/ COIL | 1 |
| 12 | 101120-033 | COIL | 2 |

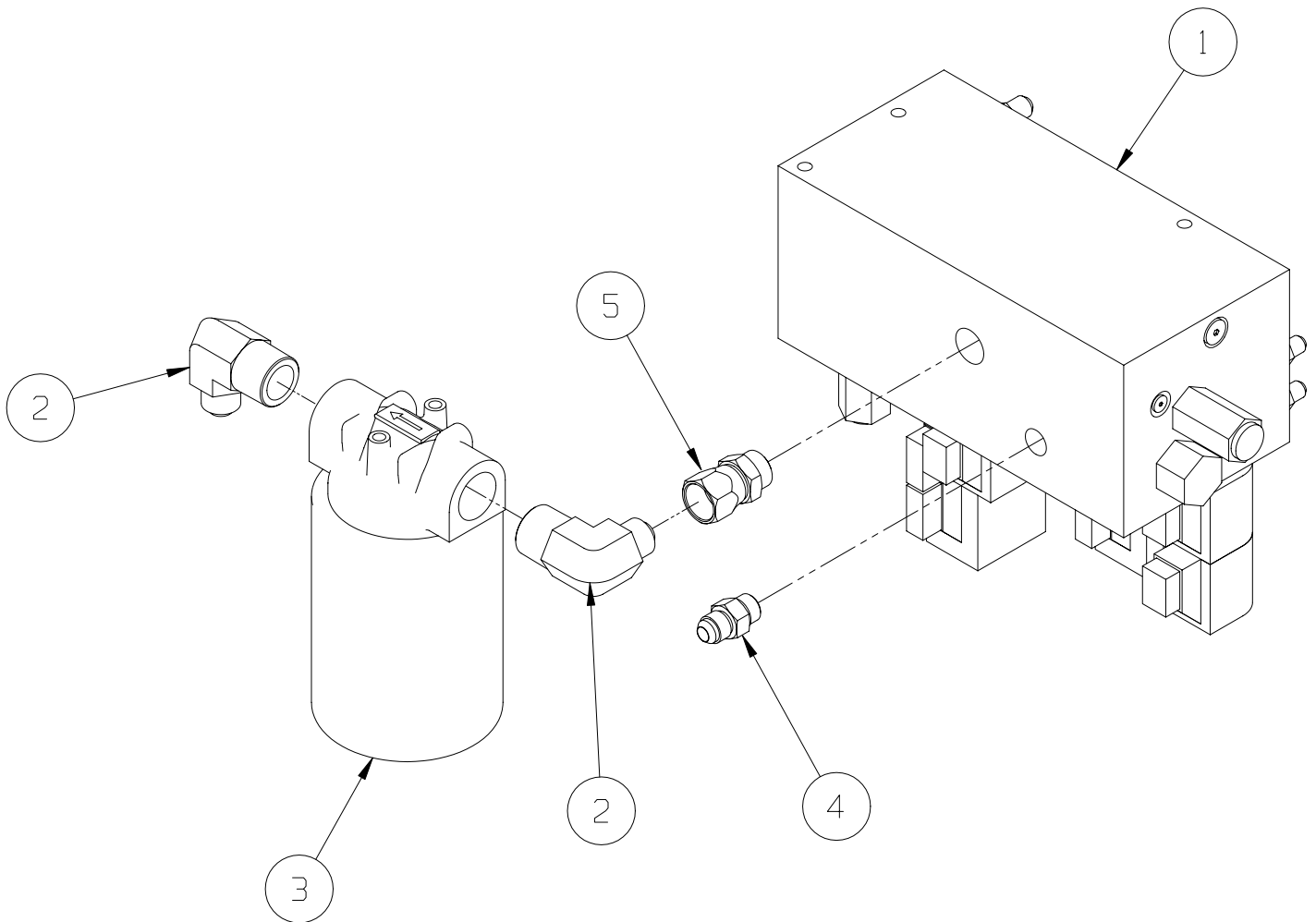
| ITEM | PART | DESCRIPTION | QTY. |
|------|------------|---------------------------------|------|
| 13 | 064845-000 | 3 POS - 4 WAY SOLENOID W/ COILS | 1 |
| 14 | 101120-035 | COUNTERBALANCE VALVE | 2 |
| 15 | 060390-025 | VALVE RELIEF | 1 |
| 16 | 020021-008 | FITTING PLUG #8 | 1 |
| 17 | 064843-000 | FLOW DIVIDER VALVE | 1 |
| 18 | 063973-001 | 2 POS POPPET VALVE W/ COIL | 1 |
| 19 | 101120-033 | COIL | 1 |
| 20 | 012004-008 | FITTING, #8 PLUG | 1 |
| 21 | 063965-001 | FITTING GAUGE | 1 |
| 22 | 064841-000 | CHECK VALVE | 1 |
| 23 | 063923-021 | 3 POS - 4 WAY SOLENOID W/ COILS | 1 |
| 24 | 020021-004 | FITTING, HEX PLUG #4 | 1 |



Valve Block Assembly

113052-000

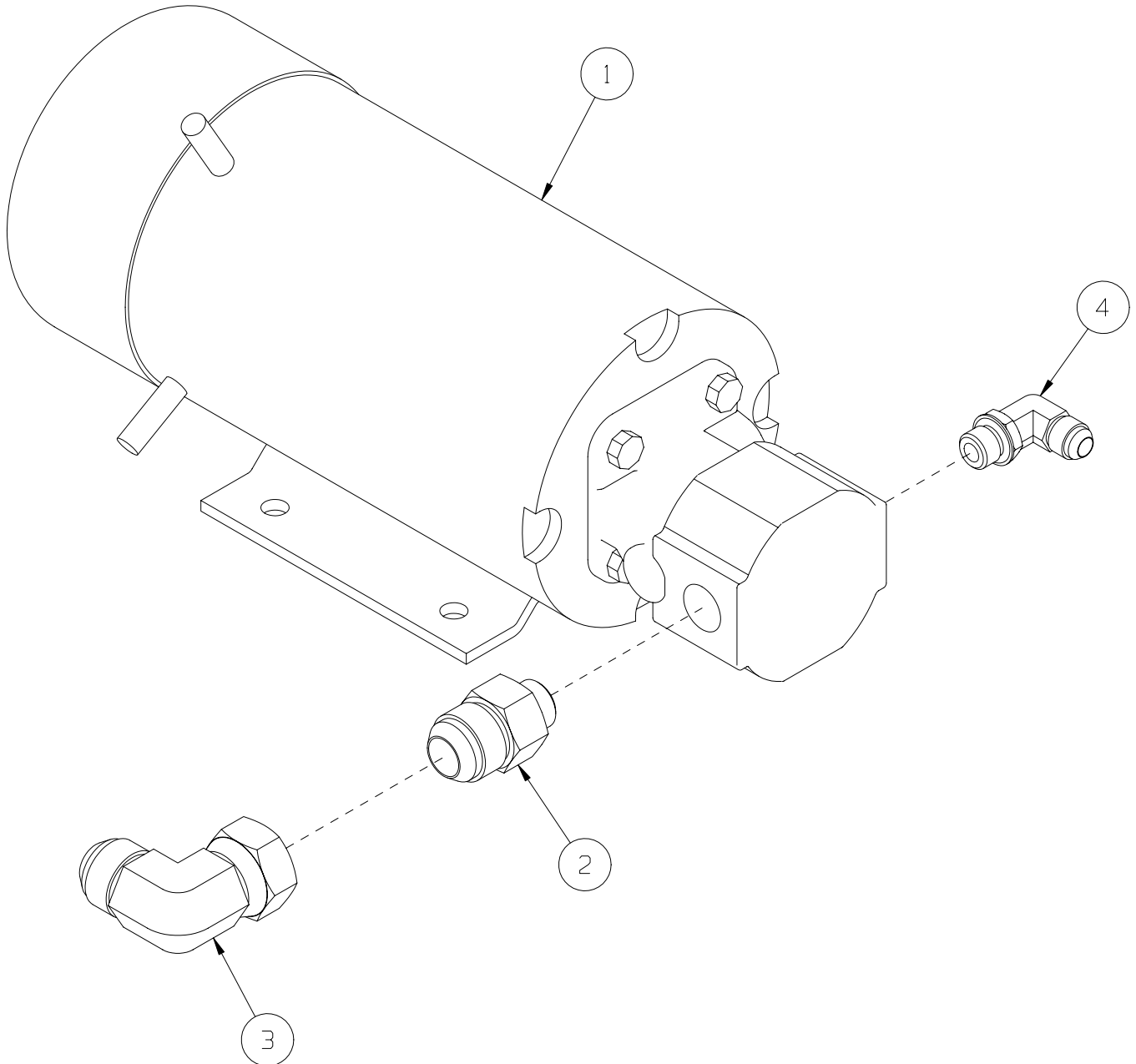
| ITEM | PART | DESCRIPTION | QTY |
|------|------------|--------------------------|-----|
| 1 | 101120-122 | VALVE BLOCK ASSY. | 1 |
| 2 | 011940-018 | FITTING, 8MJ-12MP 90 DEG | 2 |
| 3 | 005154-001 | FILTER | 1 |
| 4 | 011941-005 | FITTING, 6MB-6MJ | 1 |
| 5 | 064170-005 | FITTING, 8MB-8FJX | 1 |



Power Unit Assembly

113055-000

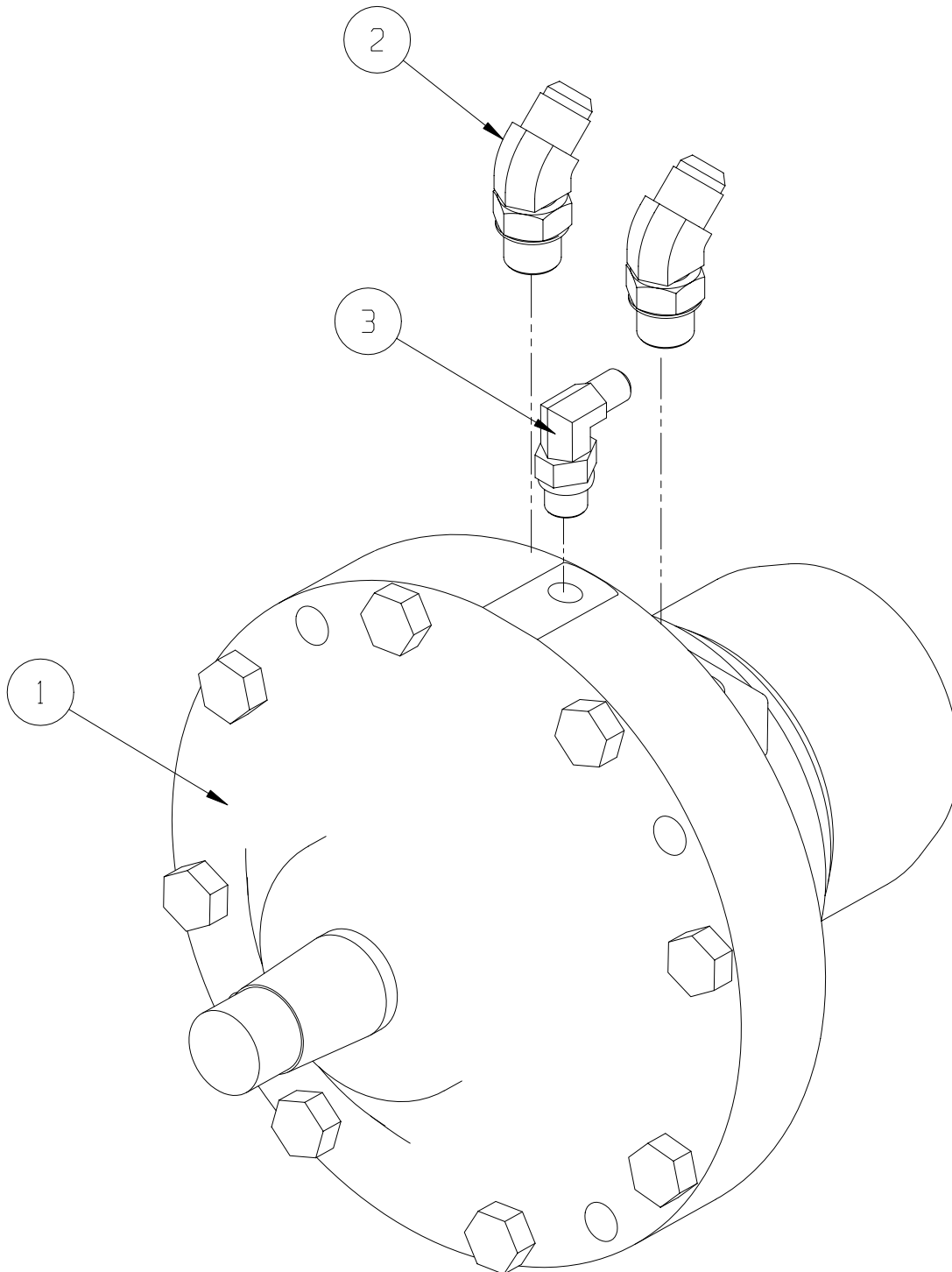
| ITEM | PART | DESCRIPTION | QTY |
|------|------------|------------------------|-----|
| 1 | 101230-000 | POWER UNIT | 1 |
| 2 | 011941-012 | FITTING, 8MB-12MJ | 1 |
| 3 | 011937-007 | FITTING, 12FJX-12MJ 90 | 1 |
| 4 | 011934-004 | FITTING, 6MB-6MJ 90 | 1 |



Drive Motor Assembly

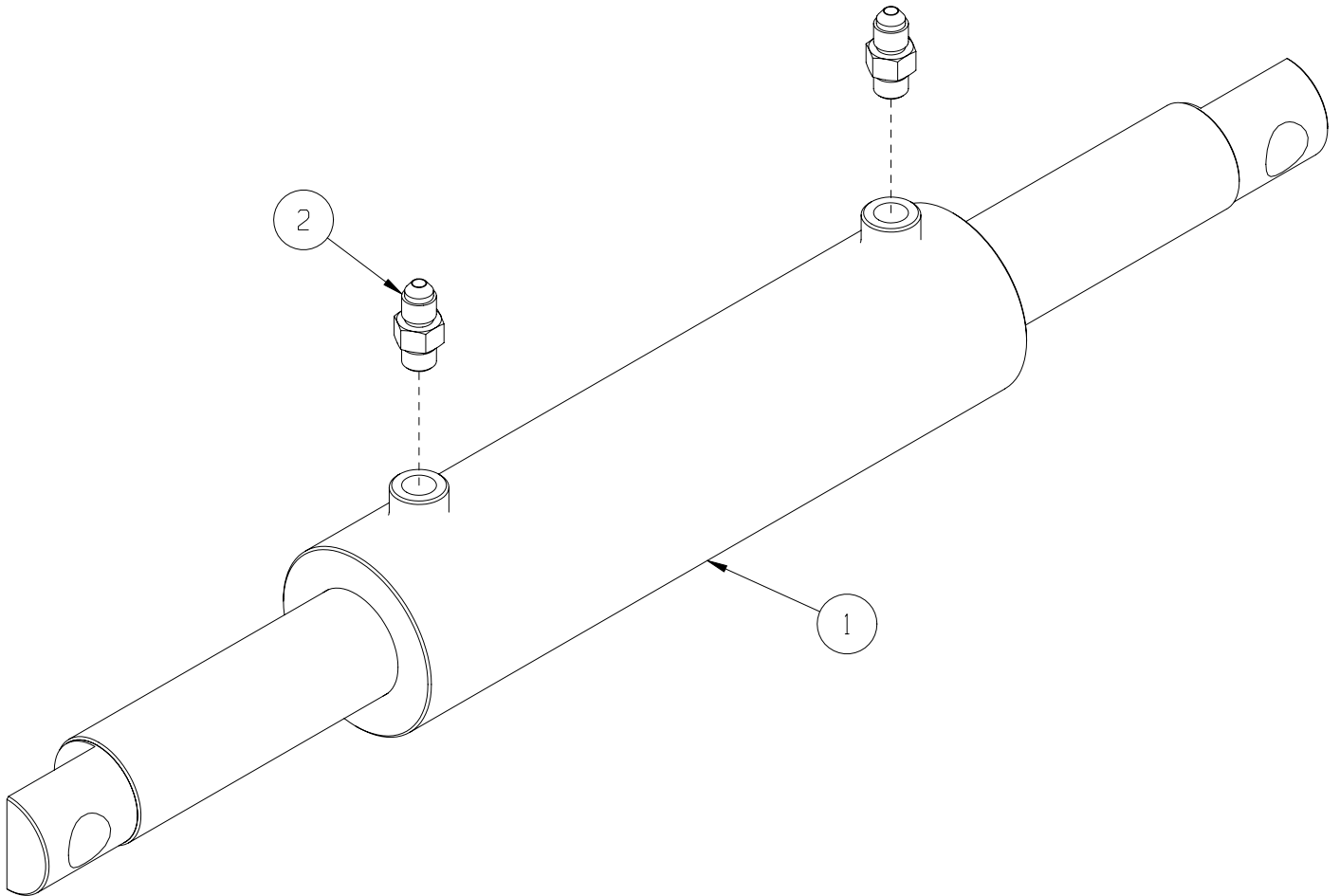
113065-000

| ITEM | PART | DESCRIPTION | QTY |
|------|------------|-------------------------|-----|
| 1 | 113066-000 | HYDRAULIC MOTOR / BRAKE | 1 |
| 2 | 011935-004 | FITTING, 6MB-6MJ45 FS | 2 |
| 3 | 011934-001 | FITTING, 4MB-4MJ90 FS | 1 |



Steering Cylinder Assembly 113051-000

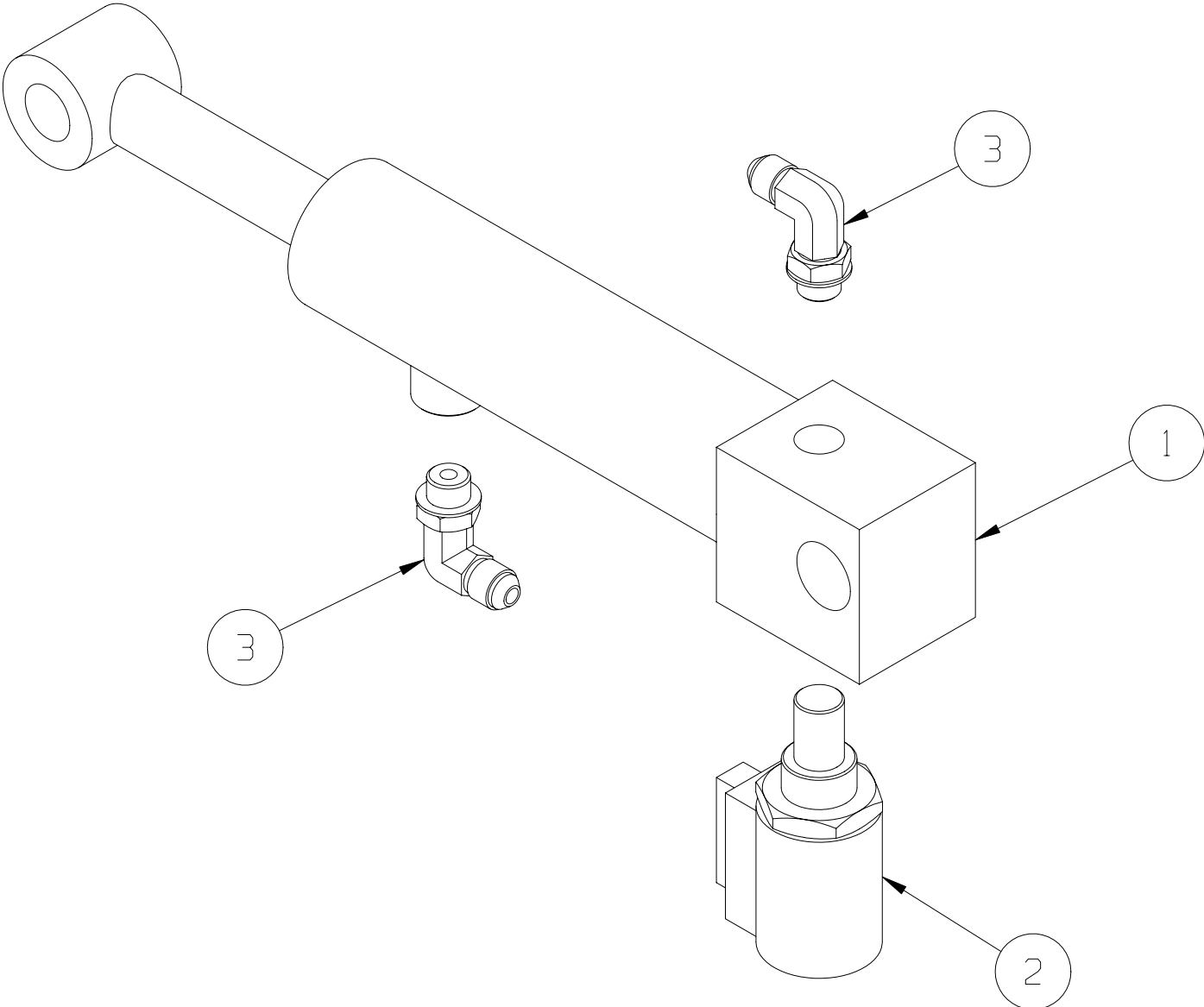
| ITEM | PART | DESCRIPTION | QTY |
|------|------------|-------------------|-----|
| 1 | 065371-000 | STEERING CYLINDER | 1 |
| * | 065371-011 | SEAL KIT | REF |
| 2 | 011941-001 | FITTING, 4MB-4MJ | 2 |



Depression Cylinder Assembly

113053-000

| ITEM | PART | DESCRIPTION | QTY |
|------|------------|--------------------|-----|
| 1 | 065970-001 | HYDRAULIC CYLINDER | 1 |
| * | 065970-001 | SEAL KIT | REF |
| 2 | 063973-001 | VALVE, SOLENOID | 1 |
| 3 | 011934-001 | FITTING, 4MB-4MJ90 | 2 |

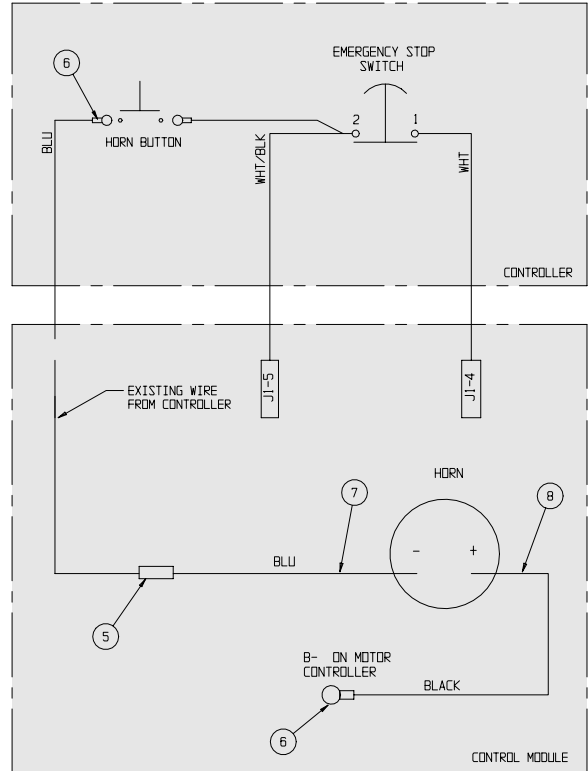
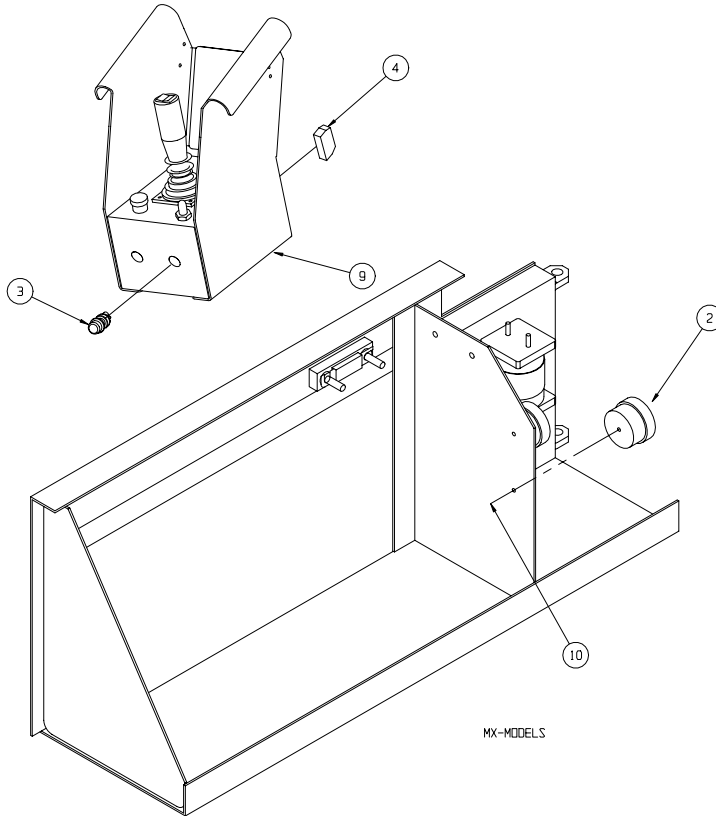


Horn Assembly Option

066614-020

| ITEM | PART | DESCRIPTION | QTY |
|------|------------|--------------------------|-----|
| 1 | - | CONTROL MODULE ASSEMBLY | REF |
| 2 | 066807-003 | HORN, 24 VDC | 1 |
| 3 | 066805-018 | SWITCH, PUSH BUTTON 6E | 1 |
| 4 | 066805-010 | CONTACT BLOCK NO | 1 |
| 5 | 029620-002 | CONNECTOR, BUTT 16-14 GA | 1 |

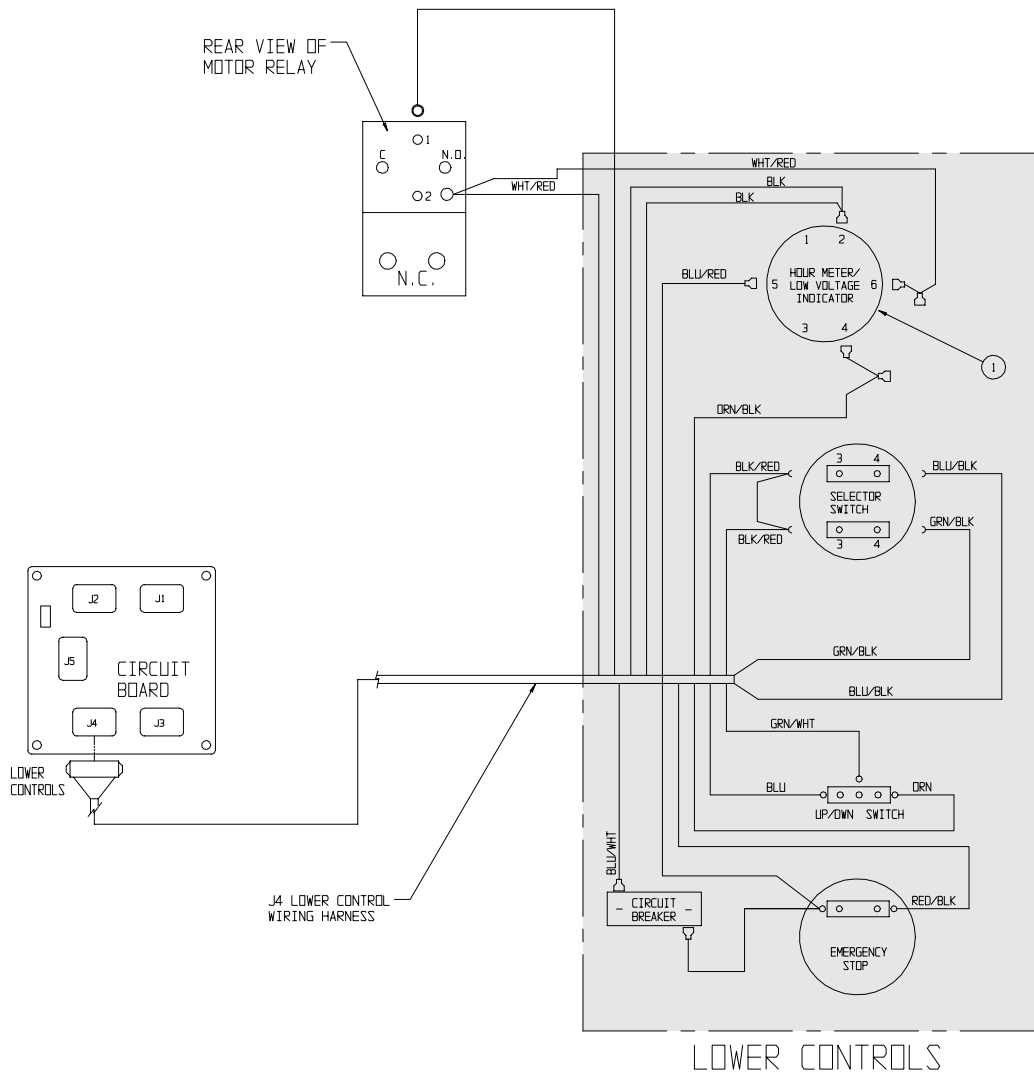
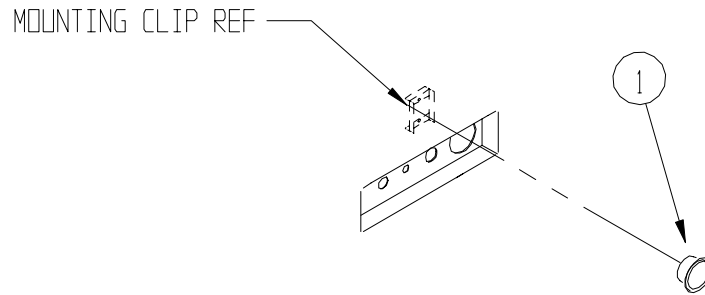
| ITEM | PART | DESCRIPTION | QTY |
|------|------------|--------------------------|------|
| 6 | 029601-013 | CONNECTOR, RING TERMINAL | 4 |
| 7 | 029453-099 | WIRE, 16 AWG BLUE | 4 FT |
| 8 | 029452-099 | WIRE, 16 AWG BLACK | 4 FT |
| 9 | - | CONTROLLER ASSY | REF |
| 10 | 011252-006 | SCREW HHC 1/4-20 X 3/4 | 1 |



Hour Meter/Low Voltage Indicator Option 066613-020

| ITEM | PART | DESCRIPTION | QTY. |
|------|------------|---------------------|------|
| 1 | 029959-000 | HR/LOW VOLTAGE IND. | 1 |

METER INSTALLATION



Removable Controller Option

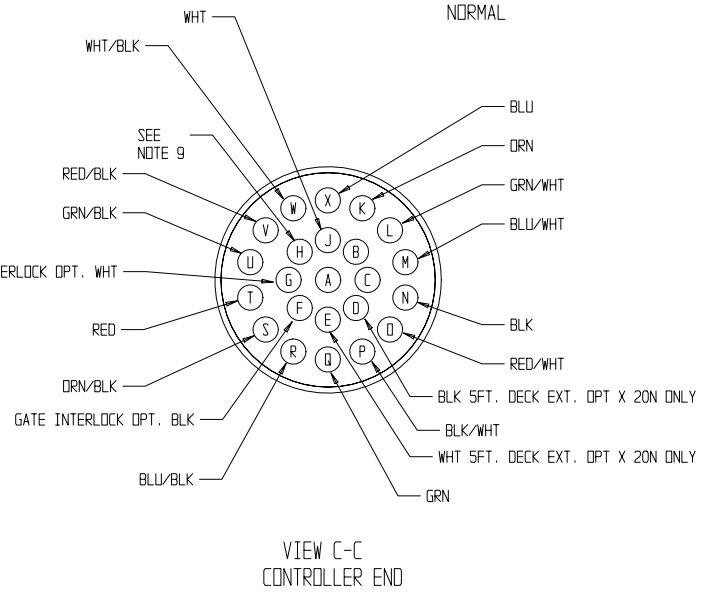
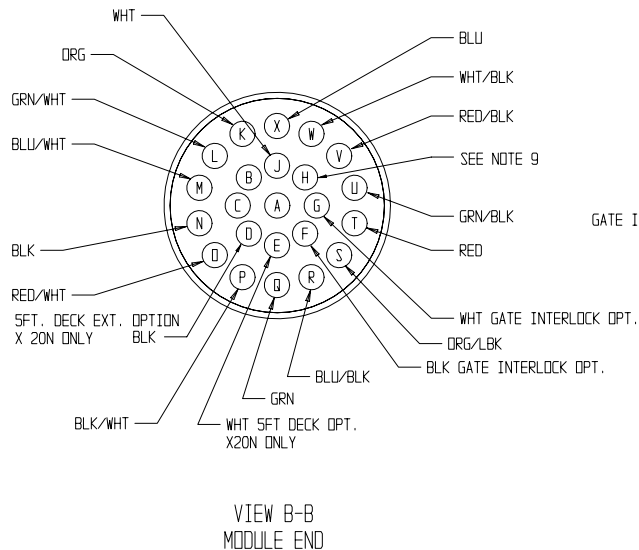
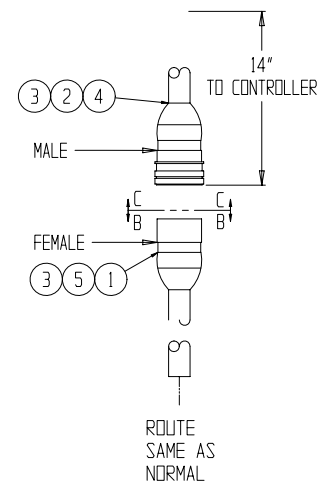
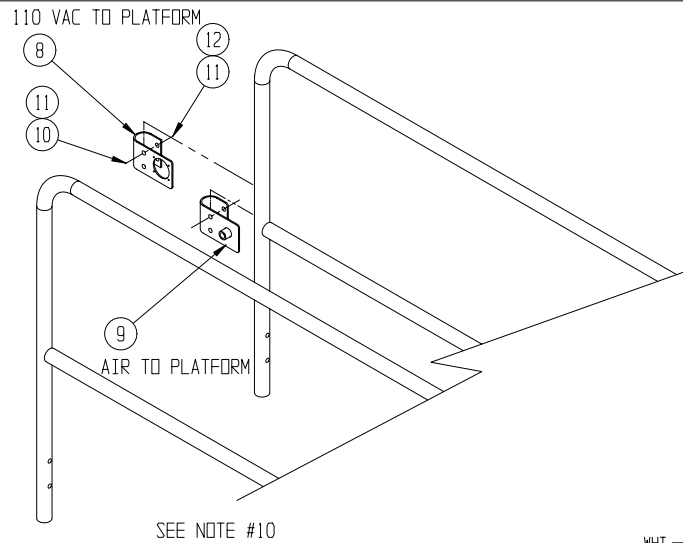
061898-001

| ITEM | PART | DESCRIPTION | QTY |
|------|------------|--------------------------------------|-----|
| 1 | 028800-003 | PLUG CONNECTOR (FEMALE) | 1 |
| 2 | 028800-004 | PIN CONTACT (MALE) | 15 |
| 3 | 028800-015 | PLUG SEALING | 16 |
| 4 | 028800-016 | RECEPTACLE CONNECTOR W/ CLAMP (MALE) | 1 |
| 5 | 028800-005 | SOCKET CONTACT (FEMALE) | 15 |

| ITEM | PART | DESCRIPTION | QTY |
|------|------------|------------------------------|-----|
| 8 | 030719-001 | 110 VAC BRACKET | 1 |
| 9 | 030719-002 | AIR BRACKET WELDMNT | 1 |
| 10 | 011254-016 | SCREW HHC GRD5 3/8-16UNC X 2 | 4 |
| 11 | 011240-006 | WASHER 3/8 STD FLAT | 4 |
| 12 | 011248-006 | NUT HEX ESNA 3/8-16 | 2 |

NOTES

- CUT OFF CONTROL CABLE 14 INCHES BELOW STRAIN RELIEF ON CONTROLLER.
- CUT OUTER CABEL COVER OF LINKAGE CABEL BACK APPROXIMATELY 1-1/2 INCH AND STRIP APPROXIMATELY 1/4 INCH OF EACH END.
- CRIMP SOCKETS (28800-005) ONTO WIRE ENDS AND INSERT INTO CONNECTOR (28800-016). REF. VIEW B-B.
- CUT OUTER CABEL COVER OF CONTROLLER END BACK APPROXIMATELY 1-1/2 INCH AND STRIP APPROXIMATELY 1/4 INCH OF EACH END.
- SLIDE BOOT AND CLAMP ONTO CABLE.
- CRIMP PINS (28800-004) ONTO WIRE ENDS AND INSERT INTO CONNECTOR (28800-003). REF. VIEW C-C.
- CLAMP BOOT TO CONNECTOR.
- CONNECT CONTROLLER AND TEST MACHINE FOR PROPER FUNCTION.
- USE TERMINAL " H " FOR HORN OPTION OR IF AUX WIRE IS REQUIRED.
- ITEM #8 THRU 12 REQD ONLY FOR 110 VAC AND/OR AIR TO PLATFORM.



Label Installation - MX15

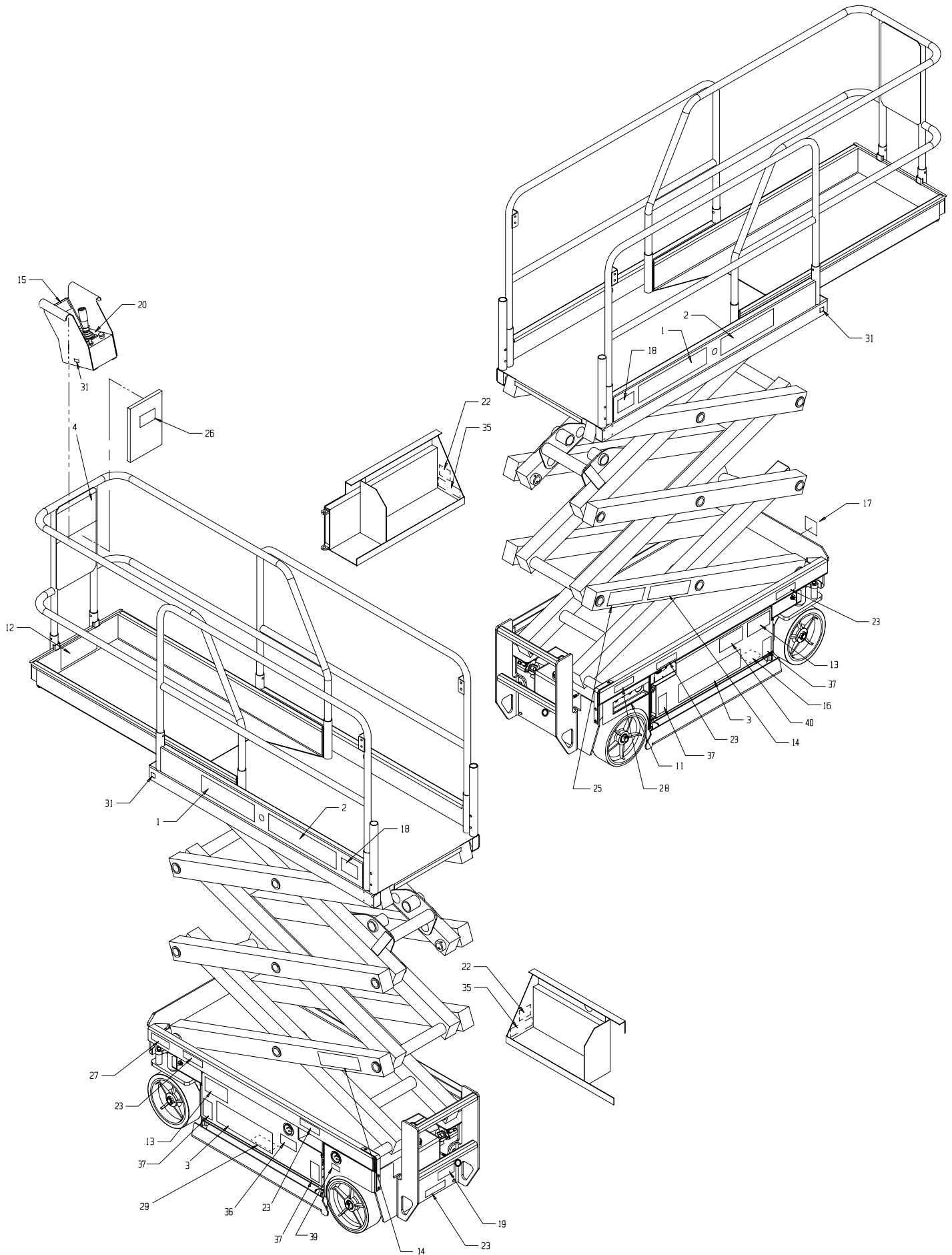
065612-033

Label Installation - MX19

065712-033

| ITEM | PART | DESCRIPTION | QTY |
|------|---------------|---------------------------|-----|
| 1 | 061683-004 | LABEL UPRIGHT | 2 |
| 2 | 061684-022 | LABEL MX 15 | 2 |
| 3 | 061683-014 | LABEL UPRIGHT | 2 |
| 4 | 066550-000 | LABEL DANGER | 1 |
| 11 | 066559-000 | LABEL CONTROLS | 1 |
| 12 | 101251-000 | LABEL MAX LOAD DECK EXT. | 1 |
| 13 | 066552-000 | LABEL WARNING | 2 |
| 14 | 066553-003 | LABEL WARNING KEEP CLEAR | 2 |
| 15 | 066554-000 | LABEL CAUTION | 1 |
| 16 | 066555-000 | LABEL CAUTION | 1 |
| 17 | 066556-000 | LABEL CAUTION | 1 |
| 18 | 101250-001 | LABEL MAX LOAD PLATFORM | 2 |
| 19 | 066558-000 | LABEL EMERG. LOWERING | 1 |
| 20 | 101222-004 | LABEL CONTROLLER | 1 |
| 22 | 05221-000 | LABEL BATTERY | 2 |
| 23 | 014222-003-99 | LABEL FORK-LIFT HERE | 5 |
| 25 | 063255-001 | LABEL SCISSOR BRACE | 1 |
| 26 | 010076-001 | LABEL INST. | 1 |
| 27 | 061220-002 | LABEL ANSI | 1 |
| 28 | 101252-002 | LABEL WHEEL MAX LOAD | 1 |
| 29 | 061205-005 | NAME PLATE | 1 |
| 31 | 064444-000 | LABEL USA | 4 |
| 35 | 062562-001 | LABEL DANGER | 2 |
| 36 | 066522-000 | LABEL BATTERY CHARGER | 1 |
| 37 | 066556-001 | LABEL WARNING | 4 |
| 39 | 068639-000 | LABEL POWER TO PLATFORM | 1 |
| 40 | 107051-000 | LABEL, BATTERY DISCONNECT | 1 |

| ITEM | PART | DESCRIPTION | QTY |
|------|--------------|----------------------------|-----|
| 1 | 061683-004 | LABEL UPRIGHT | 2 |
| 2 | 061684-023 | LABEL MX 19 | 2 |
| 3 | 061683-014 | LABEL UPRIGHT | 2 |
| 4 | 066550-000 | LABEL DANGER | 1 |
| 11 | 066559-000 | LABEL CONTROLS | 1 |
| 12 | 101251-000 | LABEL MAX LOAD DECK EXT | 1 |
| 13 | 066552-000 | LABEL WARNING | 2 |
| 14 | 066553-003 | LABEL WARNING KEEP CLEAR | 2 |
| 15 | 066554-000 | LABEL CAUTION | 1 |
| 16 | 066555-000 | LABEL CAUTION | 1 |
| 17 | 066556-000 | LABEL CAUTION | 1 |
| 18 | 101250-000 | LABEL MAX LOAD PLATFORM | 2 |
| 19 | 066558-000 | LABEL EMERG. LOWERING | 1 |
| 20 | 101222-004 | LABEL CONTROLLER | 1 |
| 22 | 05221-000 | LABEL BATTERY | 2 |
| 23 | 14222-003-99 | LABEL FORK-LIFT HERE | 1 |
| 25 | 063255-001 | LABEL SCISSOR BRACE | 1 |
| 26 | 010076-001 | LABEL INST. | 1 |
| 27 | 061220-002 | LABEL ANSI | 1 |
| 28 | 101252-009 | LABEL WHEEL MAX LOAD WHEEL | 1 |
| 29 | 061205-005 | NAME PLATE | 1 |
| 31 | 064444-000 | LABEL USA | 4 |
| 35 | 062562-001 | LABEL DANGER | 2 |
| 36 | 066522-000 | LABEL BATTERY CHARGER | 1 |
| 37 | 066556-001 | LABEL WARNING | 4 |
| 39 | 068639-000 | LABEL POWER TO PLATFORM | 1 |
| 40 | 107051-000 | LABEL, BATTERY DISCONNECT | 1 |



NOTES:

UpRight

Call Toll Free in U.S.A.
1-800-926-LIFT

UpRight, Inc.

801 South Pine Street
Madera, California 93637

TEL: 559-662-3900

FAX: 559-673-6184

PARTS: 1-888-UR-PARTS

PARTS FAX: 1-800-669-9884

UpRight

Call Toll Free in U.S.A.

1-800-926-LIFT

P/N 113102-000

11-02

UpRight

Unit S1, Park West Industrial Park

Friel Avenue

Nangor Road

Dublin 12, Ireland

TEL: +353 1 620 9300

FAX: +353 1 620 9301